

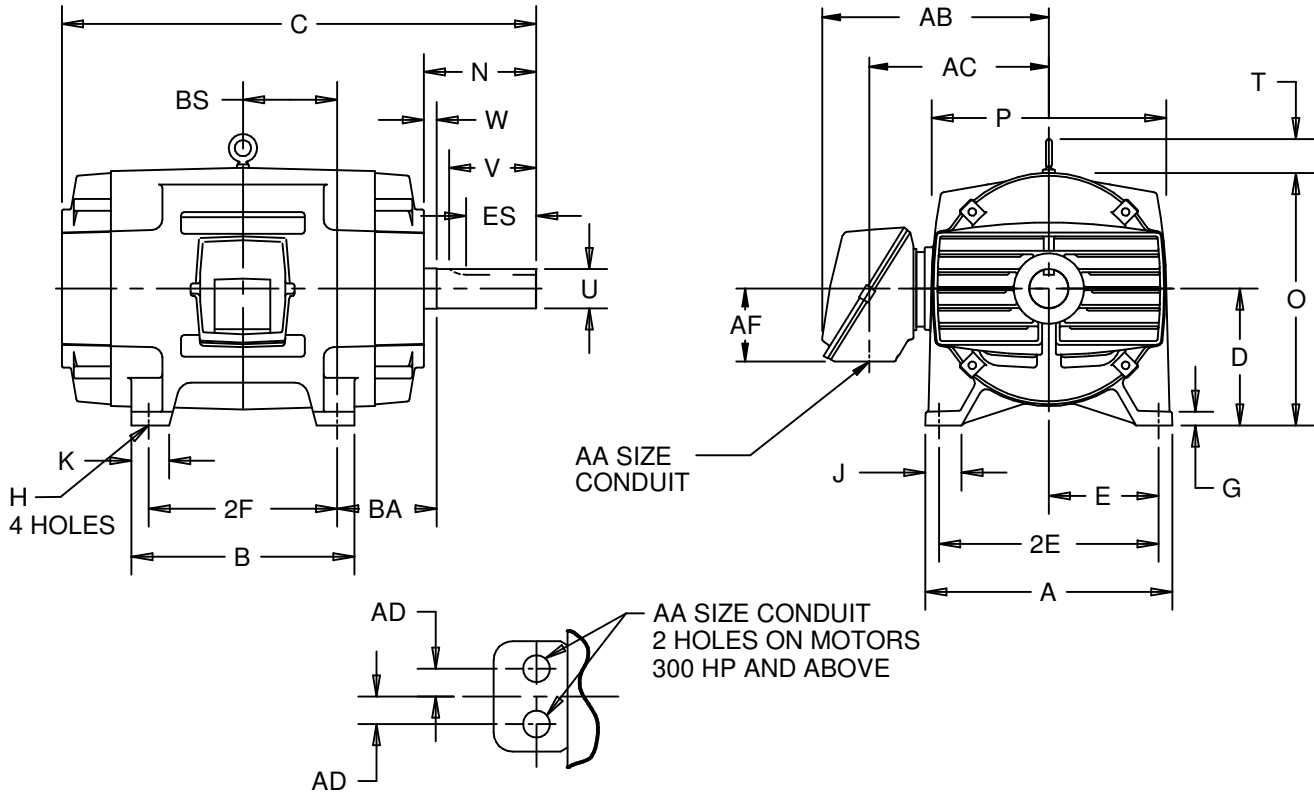
EFFECTIVE:  
**31-MAR-17**

SUPERSEDES:  
**NEW**

**DIMENSION PRINT**  
OPEN DRIP PROOF  
FRAME: 444T THRU 445TS  
BASIC TYPE: R

PRINT:  
**14-1504**

SHEET:  
**1 OF 1**



ALL DIMENSIONS ARE IN INCHES AND MILLIMETERS

UNITS	A	D -.06	E	2E ±.03	G	H +.05	J	O	P <sup>2</sup>	T	W	BA
IN	22.00	11.00	9.00	18.00	1.38	.81	4.00	22.06	22.94	3.25	.25	7.50
MM	559	279	229	457	35	21	102	560	583	83	6	191

FRAME	UNITS	B	C	K	N	2F ±.03	U -.001	V MIN	BS	ES MIN	SQ KEY
444T	IN	17.75	37.75	3.25	8.75	14.50	3.375	8.25	7.25	6.91	.875
	MM	451	959	83	222	368	85.73	210	184	176	22.23
444TS	IN	17.75	34.00	3.25	4.97	14.50	2.375	4.50	7.25	3.03	.625
	MM	451	864	83	126	368	60.33	114	184	77	15.88
445T	IN	19.75	39.75	3.25	8.75	16.50	3.375	8.25	8.25	6.91	.875
	MM	502	1010	83	222	419	85.73	210	210	176	22.23
445TS	IN	19.75	36.00	3.25	5.00	16.50	2.375	4.50	8.25	3.03	.625
	MM	502	914	83	127	419	60.33	114	210	77	15.88

FULL LOAD AMPS	HP	UNITS	AA	AB	AC	AD	AF
UP TO 250	---	IN	3.00	19.81	15.31	---	4.72
		MM		503	389	---	120
251 AND UP	≤ 250	IN	3 1/2 NPT	22.44	16.81	---	8.06
		MM		570	427	---	205
	≥ 300	IN	3 NPT	22.44	16.81	2.75	8.06
		MM		570	427	70	205

1: ALL ROUGH CASTING DIMENSIONS MAY VARY BY .25" DUE TO CASTING AND/OR FABRICATION VARIATIONS.  
2: LARGEST MOTOR WIDTH.

3: CONDUIT BOX MAY BE LOCATED ON EITHER SIDE OF MOTOR. CONDUIT OPENINGS MAY BE LOCATED IN STEPS OF 90 DEGREES REGARDLESS OF LOCATION. STANDARD AS SHOWN WITH CONDUIT OPENING DOWN.  
4: TOLERANCES SHOWN ARE IN INCHES ONLY.

07-1988/E

**Nidec Motor Corporation**  
St. Louis, Missouri

INFORMATION DISCLOSED ON THIS DOCUMENT IS CONSIDERED PROPRIETARY AND SHALL NOT BE REPRODUCED OR DISCLOSED WITHOUT WRITTEN CONSENT OF NIDEC MOTOR CORPORATION



ISSUED BY  
**R. KING**  
APPROVED BY  
**J. O'BRIEN**

IHP\_DP\_NMCA (MAR-2011) SOLIDEDGE