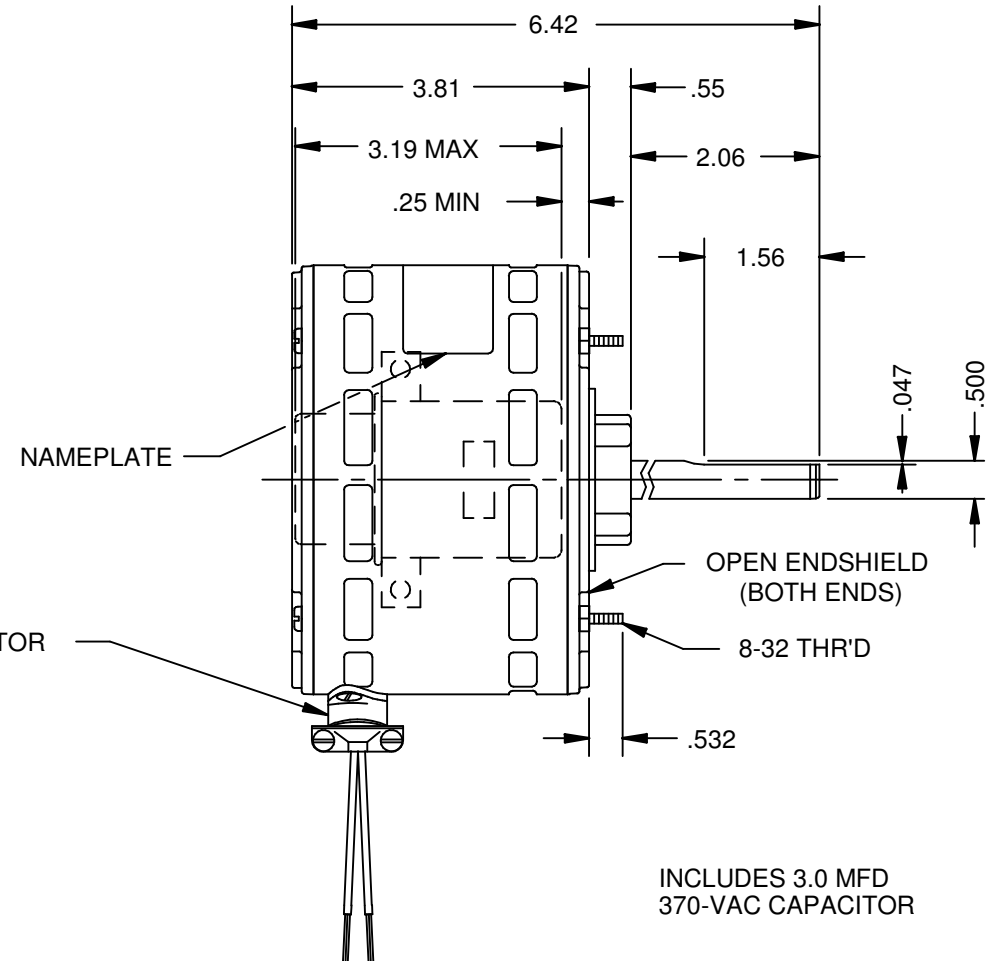
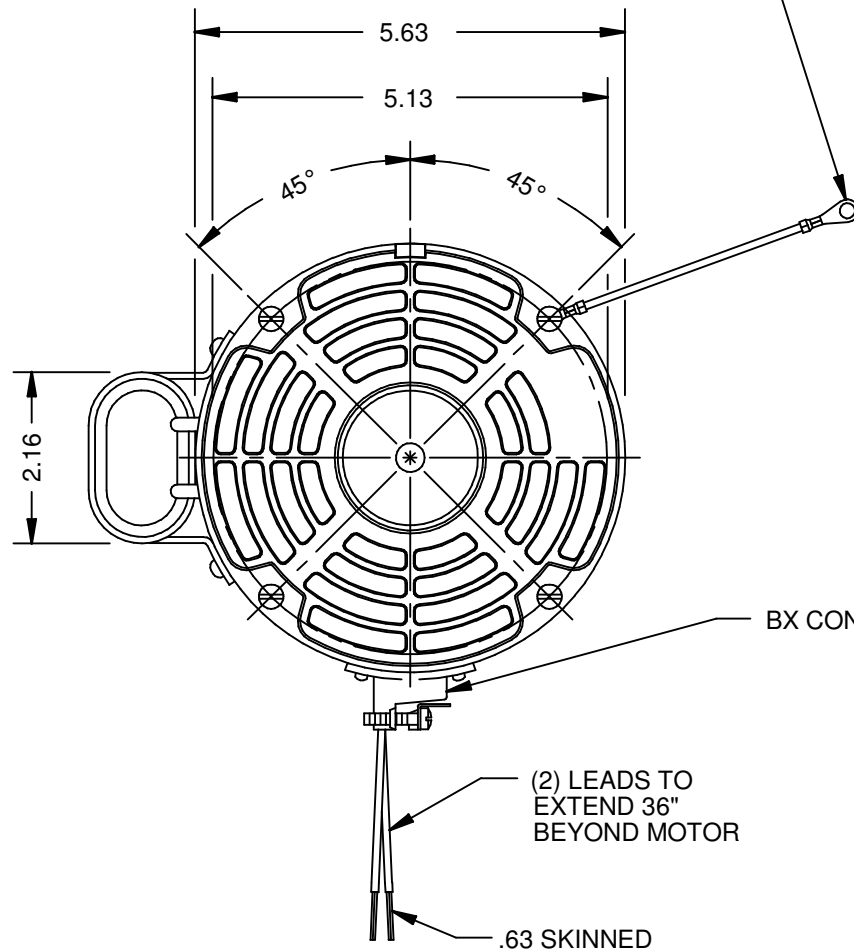


#12 GREEN GROUND LEAD TO BE
12.00" BETWEEN CENTERS OF
TERMS. TERM. TO FIT #10 SCREW



NIDEC MOTOR CORPORATION 12-Oct-12

MODEL		REF	CUSTOMER	HP	VOLTS	AMPS	HZ	RPM	ROTATION	CUSTOMER PN
K55HXSMA-1645			STANDARD	1/6	208-230	1.4	60	1550	CW. LEAD END	1645
SHEET NUMBER 1 OF 1	REV D	REVISION RECORD FOR: C6404-00			INFORMATION DISCLOSED ON THIS DOCUMENT IS CONSIDERED PROPRIETARY AND SHALL NOT BE REPRODUCED OR DISCLOSED WITHOUT WRITTEN CONSENT OF NIDEC MOTOR CORPORATION				NIDEC MOTOR CORPORATION	
		UPDATED ENGINEER APPROVED TO B. GAITAN								
REVISION DATE										
12-OCT-12										