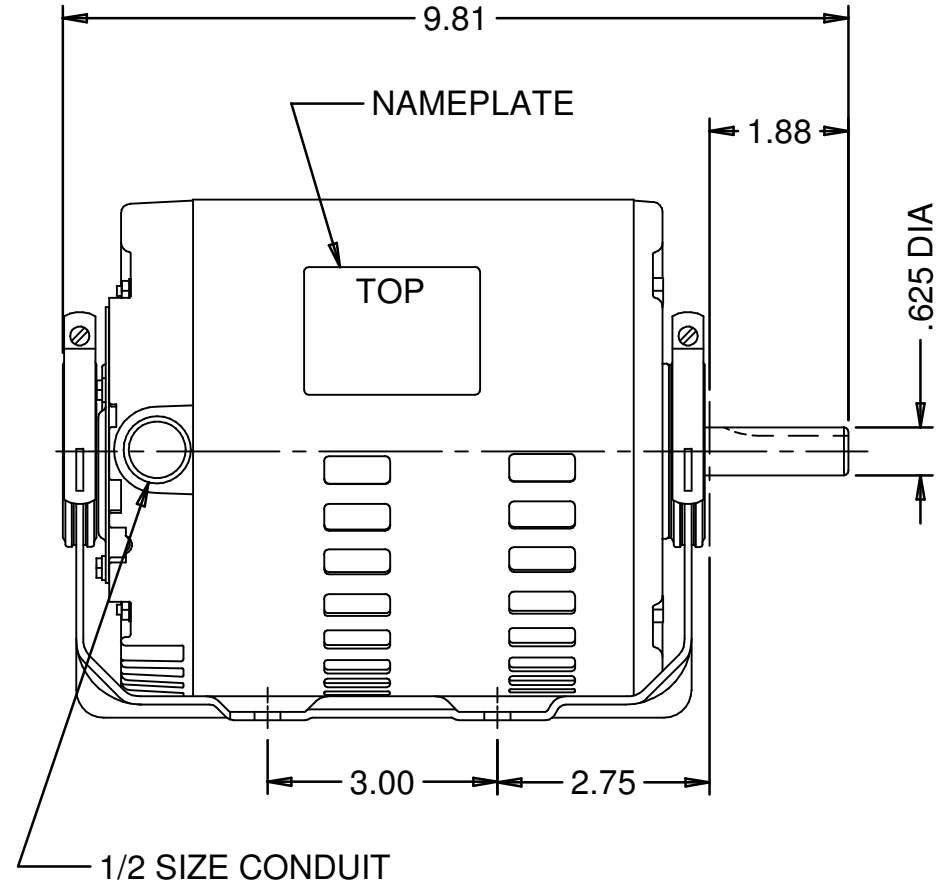
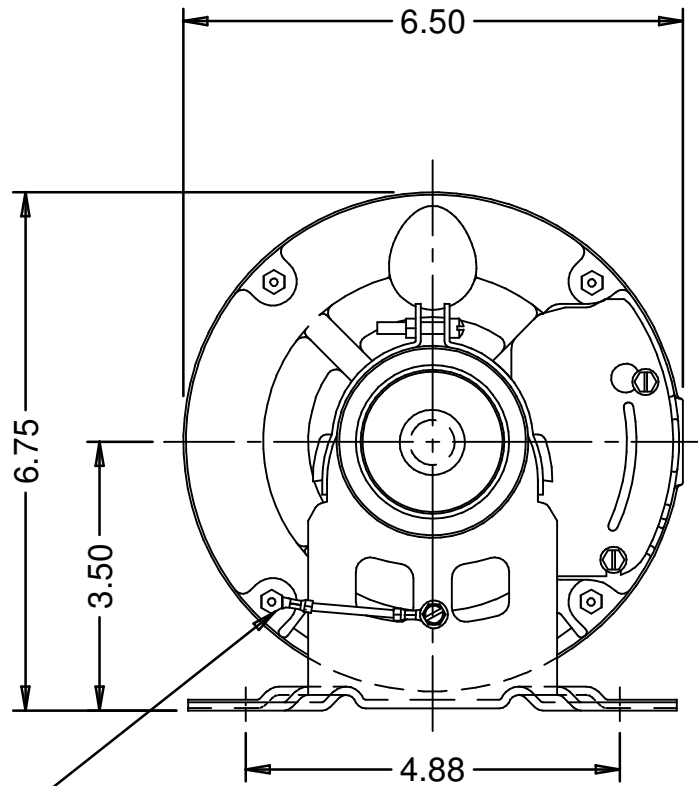


.19 SQ. SHAFT KEY



GROUND LEAD (1): GREEN; 16 AWG; .031 (PVC) INSULATION; TO BE 3.000 ±.250 BETWEEN CENTERS OF TERMS.; #10 RING TERMINATION

NIDEC MOTOR CORPORATION 11-Oct-12

MODEL	REF	CUSTOMER	HP	VOLTS	AMPS	HZ	RPM	ROTATION	CUSTOMER PN	
S63JXSLY-7019		STANDARD	1/2	115/230	8.0/4.0	60	1725	CCW LEAD END REV	4114	
SHEET NUMBER 1 OF 1	REV E	REVISION RECORD FOR: C6408-00			INFORMATION DISCLOSED ON THIS DOCUMENT IS CONSIDERED PROPRIETARY AND SHALL NOT BE REPRODUCED OR DISCLOSED WITHOUT WRITTEN CONSENT OF NIDEC MOTOR CORPORATION				NIDEC MOTOR CORPORATION	
		UPDATED "ENGINEER APPROVED" TO B. GAITAN.								
REVISION DATE										
11-OCT-12				ALL DIMENSIONS ARE FOR REFERENCE ONLY UNLESS TOLERANCE IS GIVEN						
ISSUED BY E. VICENCIO	REVIEWED BY M. LARGENT	ENGINEER APPROVED B. GAITAN	REV. E	TITLE ASSEMBLED VIEW			CODE V01	ITEM NO. 255588	SIZE A	