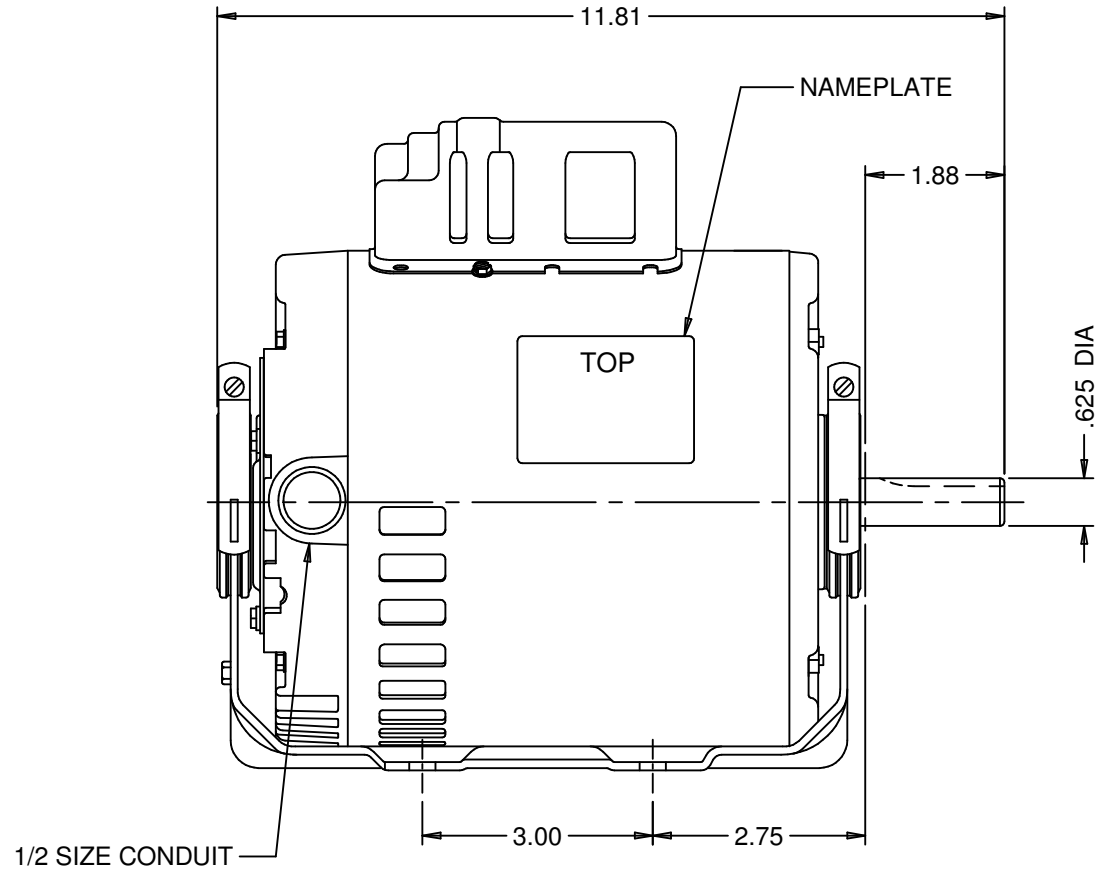
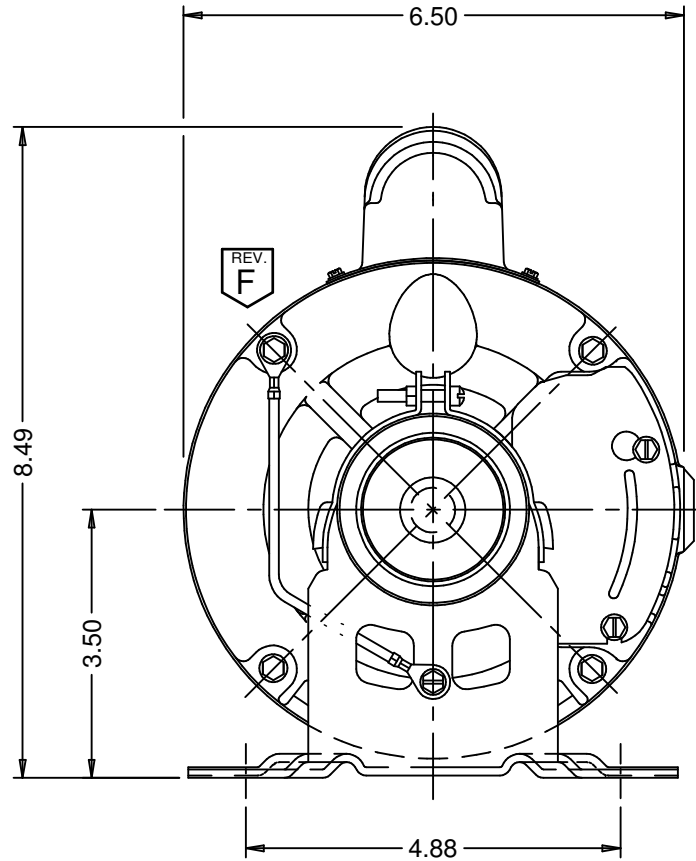


.19 SQ. SHAFT KEY



NIDEC MOTOR CORPORATION 03-Oct-17

MODEL	REF	CUSTOMER	HP	VOLTS	AMPS	HZ	RPM	ROTATION	CUSTOMER PN
C63CXSL-3818	-	STANDARD	1	115/208-230	14.0/7.0	60	1725	CCW LEAD END REV	1769

SHEET NUMBER	REV	REVISION RECORD FOR: ECO E29748	
1 OF 1	F	CHANGED VIEW GROUND LEAD TO BEHIND BASE LE.	
REVISION DATE			
03-OCT-17			
ISSUED BY	REVIEWED BY	ENGINEER APPROVED	
C. LUGO	F. FLORES	B. GAITAN	

INFORMATION DISCLOSED ON THIS DOCUMENT IS CONSIDERED PROPRIETARY AND SHALL NOT BE REPRODUCED OR DISCLOSED WITHOUT WRITTEN CONSENT OF NIDEC MOTOR CORPORATION

ALL DIMENSIONS ARE FOR REFERENCE ONLY UNLESS TOLERANCE IS GIVEN

TITLE	CODE	ITEM NO.	SIZE
ASSEMBLED VIEW	V01	261695	A

NIDEC MOTOR CORPORATION	