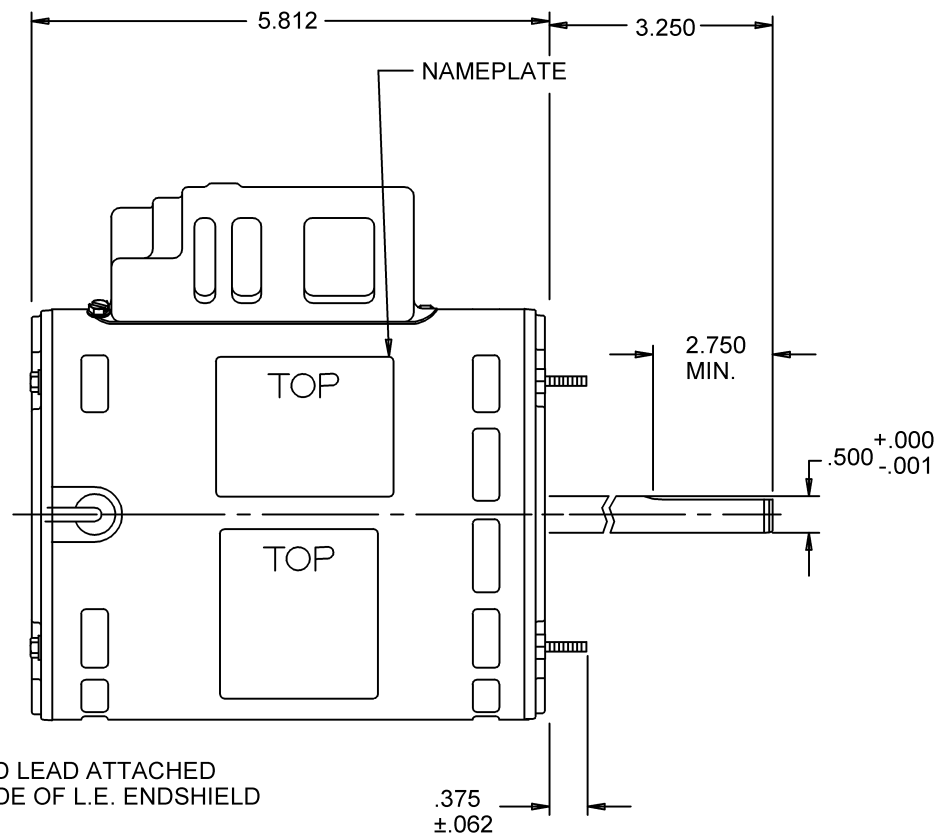
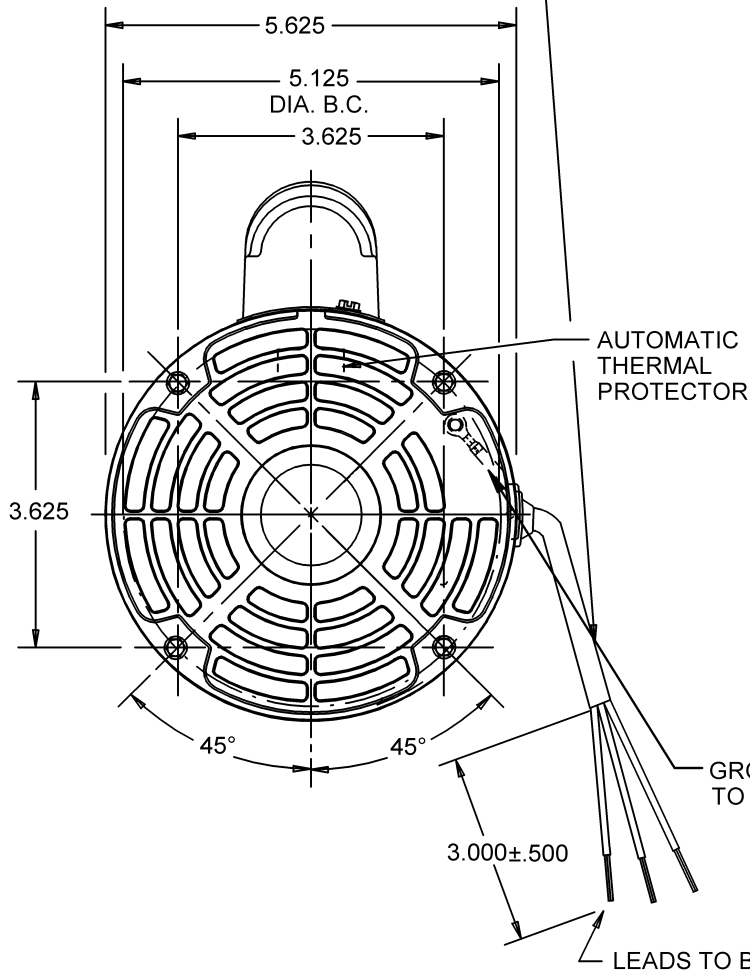


#18, 3 COND. SJT0W CORD 105°C  
 TO EXTEND BEYOND MOTOR 15.000 <sup>+3.000</sup> <sub>-.000</sub>  
 (BLACK, WHITE & GREEN)



CONNECTIONS  
 HIGH - BLACK  
 COMMON - WHITE  
 GROUND - GREEN

NIDEC MOTOR CORPORATION 15-Nov-12

MODEL	REF	CUSTOMER	HP	VOLTS	AMPS	HZ	RPM	ROTATION	CUSTOMER PN	
K55HXEMG-7418		STANDARD	1/12	115	1.7	60	850	CW LEAD END	4740	
SHEET NUMBER 1 OF 1	REV E	REVISION RECORD FOR: C6402-02			INFORMATION DISCLOSED ON THIS DOCUMENT IS CONSIDERED PROPRIETARY AND SHALL NOT BE REPRODUCED OR DISCLOSED WITHOUT WRITTEN CONSENT OF NIDEC MOTOR CORPORATION				<b>NIDEC MOTOR CORPORATION</b>	
REVISION DATE		UPDATED ENGINEER APPROVED TO B.GAITAN								
15-NOV-12										
ISSUED BY R. MORALES		REVIEWED BY M. LARGENT	ENGINEER APPROVED B. GAITAN	TITLE ASSEMBLED VIEW			CODE V01	ITEM NO. 753951	SIZE A	

V01\_NMCA (MAR-2011)

SOLIDEDGE