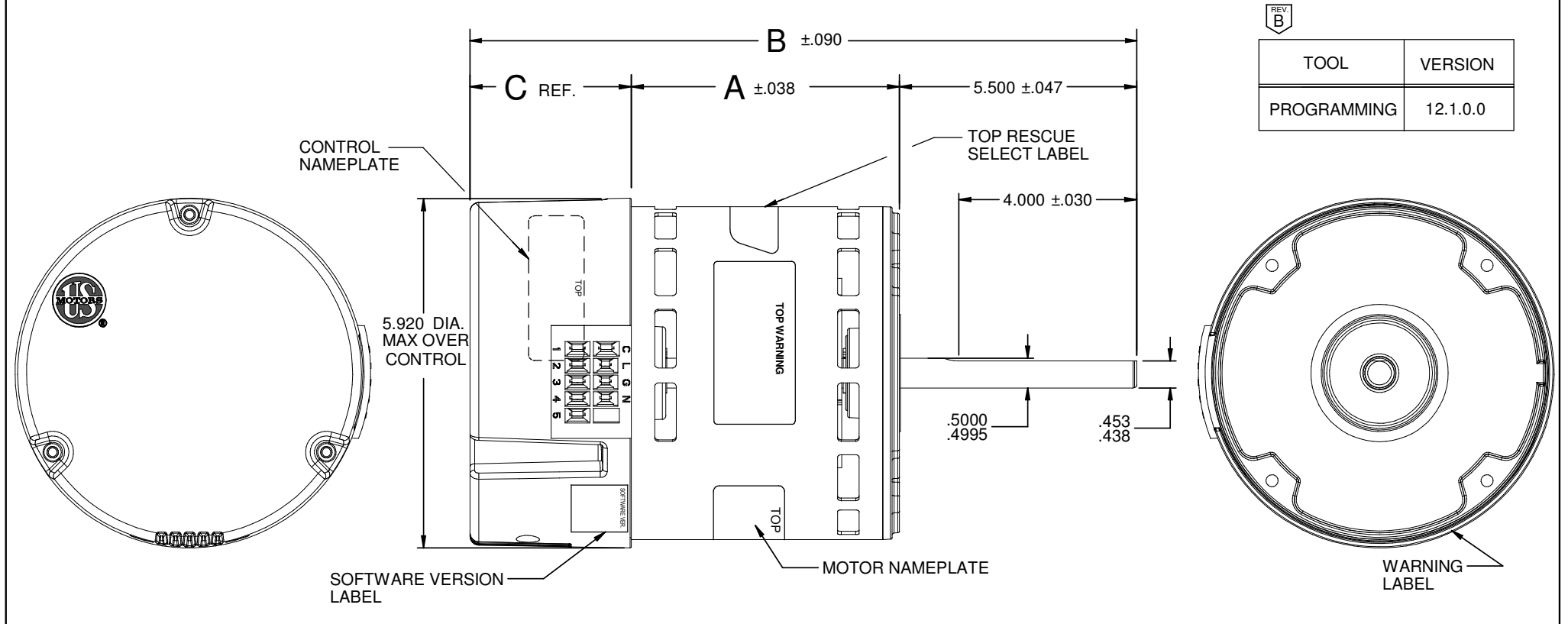


VAR	MODEL	CUSTOMER	H.P.	VOLTS	AMPS	HZ	R.P.M.	ROTATION	CATALOG NO.	DIM. A	DIM. B	DIM. C	SOFTWARE VER
001	M055PWCYL-0382	WHOLESALE	1	208-230	6.9-7.0 & 6.4-6.6	50&60	1050/ VAR	REVERSIBLE	6651RS	4.531	12.750	2.719	42
002	M055PWCYS-0387	WHOLESALE	3/4	208-230	5.8-5.5 & 6.3-6.1	50&60	1050/ VAR	REVERSIBLE	6641RS	4.031	12.250	2.719	44
003	M055PWCYZ-0393	WHOLESALE	1/2	208-230	4.0-3.7 & 4.6-4.3	50&60	1050/ VAR	REVERSIBLE	6631RS	3.531	11.750	2.719	43
004	M055PWEHY-1074	WHOLESALE	1	115	11.0 & 10.6	50&60	1050/ VAR	REVERSIBLE	6650RS	4.531	12.750	2.719	42
005	M055PWELE-1124	WHOLESALE	3/4	115	9.5 & 9.3	50&60	1050/ VAR	REVERSIBLE	6640RS	4.031	12.250	2.719	44
006	M055PWENM-1175	WHOLESALE	1/2	115	6.5 & 6.4	50&60	1050/ VAR	REVERSIBLE	6630RS	3.531	11.750	2.719	43



SHEET NUMBER	REV	REVISION RECORD FOR: C5980-01
1 OF 1	B	CHANGED DIMENSION "B" IN ALL THE VAR (001, 002, 003, 004, 005, 006).
REVISION DATE		
14-SEP-12		
ISSUED BY	REVIEWED BY	ENGINEER APPROVED
B. ANDRADE	D. CONLEY	D. CONLEY

INFORMATION DISCLOSED ON THIS DOCUMENT IS CONSIDERED PROPRIETARY AND SHALL NOT BE REPRODUCED OR DISCLOSED WITHOUT WRITTEN CONSENT OF NIDEC MOTOR CORPORATION

NIDEC MOTOR CORPORATION

ALL DIMENSIONS ARE FOR REFERENCE ONLY UNLESS TOLERANCE IS GIVEN

NIDEC MOTOR CORPORATION 14-Sep-12

TITLE: **ASSEMBLED VIEW**

CODE: **V01**

ITEM NO.: **791956**
SIZE: **B**