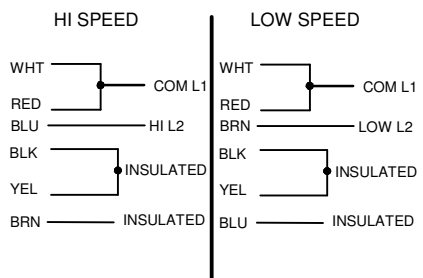


CONNECTIONS



TO REVERSE ROTATION
INTERCHANGE RED & BLK LEADS

ALL LEADS TO EXIT INTO CONDUIT BOX
AND EXTEND BEYOND THE SHELL
6.000 ± 1.000 AND TO BE SKINNED .750.

KNOCKOUT,
1.125 DIA HOLE OR
.484 DIA DIA W/KEY
FOR TOGGLE SWITCH

NIDEC MOTOR CORPORATION 06-Nov-12

MODEL	REF	CUSTOMER	HP	VOLTS	AMPS	HZ	RPM	ROTATION	CUSTOMER PN
S63JWR-8122		USEM	1/2 / 1/4	115	7.2 / 5.0	60	1725 / 1140	CW/CCW	T12B10N

SHEET NUMBER	REV	REVISION RECORD FOR: JC 67973
1 OF 1	-	CREATED DRAWING.
REVISION DATE		
02-NOV-12		

INFORMATION DISCLOSED ON THIS DOCUMENT IS CONSIDERED PROPRIETARY AND SHALL NOT BE REPRODUCED OR DISCLOSED WITHOUT WRITTEN CONSENT OF NIDEC MOTOR CORPORATION

NIDEC MOTOR CORPORATION

ALL DIMENSIONS ARE FOR REFERENCE ONLY UNLESS TOLERANCE IS GIVEN

ISSUED BY	REVIEWED BY	ENGINEER APPROVED
F. MARTINEZ	T. BOSSALLER	T. BOSSALLER

TITLE	CODE	ITEM NO.	SIZE
ASSEMBLED VIEW	V01	794548	A