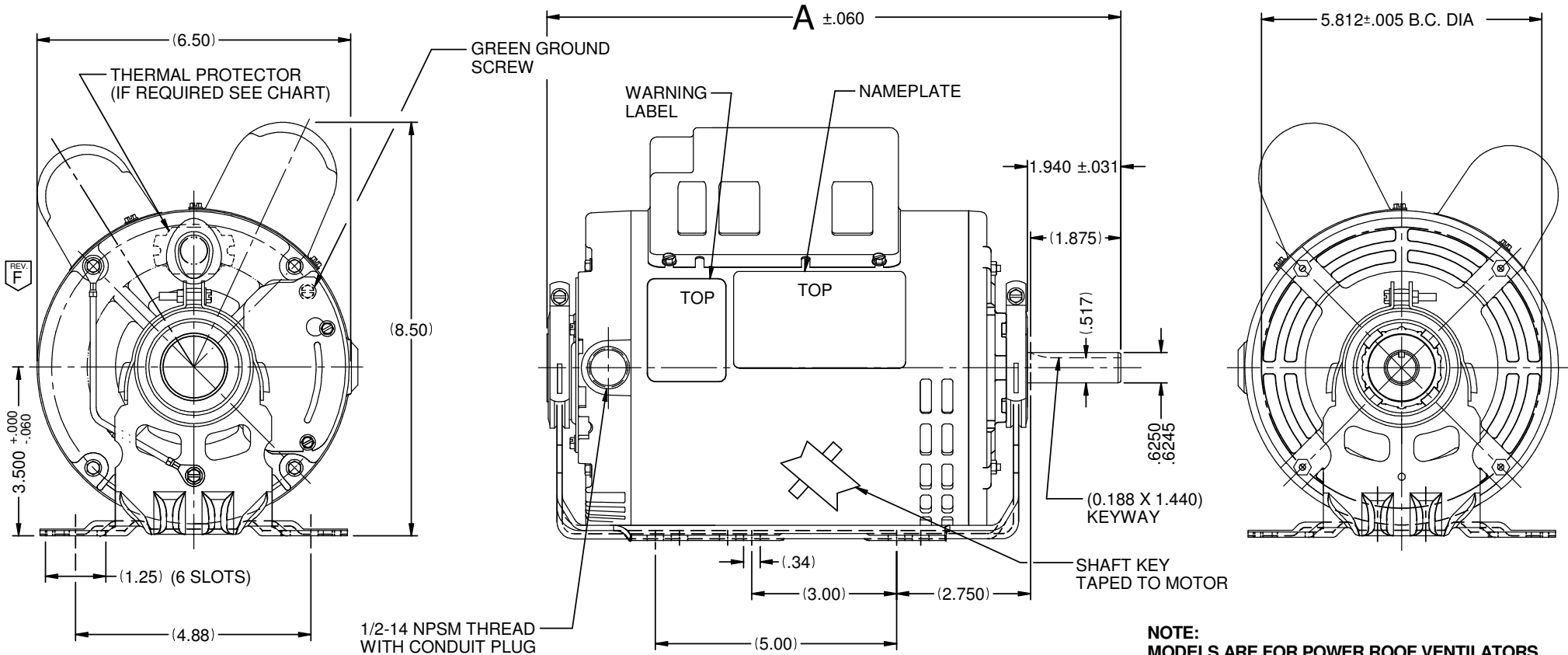


VAR	MODEL	CUSTOMER	CAT. NO.	A	B	C	D	HP	VOLTS	SF	AMPS	HZ	RPM	CONN VOLTS	PROT.	DESCRIPTION / REMARKS
001	T63CXCKP-2137	USEM	D1CPA2PH9	12.320	-----	-----	-----	1.0	115/230	1.15	8.8/4.4	60	1725	230	AUTO	N56H, ODP
002	T63CXCRB-2346	USEM	D1CPA2JH9	12.320	-----	-----	-----	1.0	115/208-230	1.15	8.8/4.4-4.4	60	1725	230	AUTO	N56H, ODP



**NOTE:**  
**MODELS ARE FOR POWER ROOF VENTILATORS.**  
**MOUNTED VERTICAL SHAFT UP.**  
**SEE CRITICAL REQUIREMENT #5**

NIDEC MOTOR CORPORATION 09-Apr-18

MOTOR IS CCW ROTATION LEAD END, REVERSIBLE, TO REVERSE ROTATION INTERCHANGE RED AND BLACK LEADS

REFER TO S.E.I.M. 24-1

**REVISION RECORD FOR:**

ECO E30650

CHANGED VIEW OF GROUND LEAD TO BEHIND OF THE BASE.

TOLERANCES ON DIMENSIONS  
(UNLESS OTHERWISE SPECIFIED)

INCHES  
.XX = ± .010  
.XXX = ± .005

mm

ANGLES X° = ± 1°

**NIDEC MOTOR CORPORATION**

INFORMATION DISCLOSED ON THIS DOCUMENT IS CONSIDERED PROPRIETARY AND SHALL NOT BE REPRODUCED OR DISCLOSED WITHOUT WRITTEN CONSENT OF NIDEC MOTOR CORPORATION

REVISION DATE:

**13-APR-18**

ISSUED BY: **C. LUGO**

ENGINEER APPROVED: **F. FLORES**

TITLE: **CUSTOMER DETAIL DRAWING**

CODE: **V02**

ITEM NO.: **802990**

REV: **F**

SHEET NUMBER: **1 OF 4**

DWG SIZE: **B**