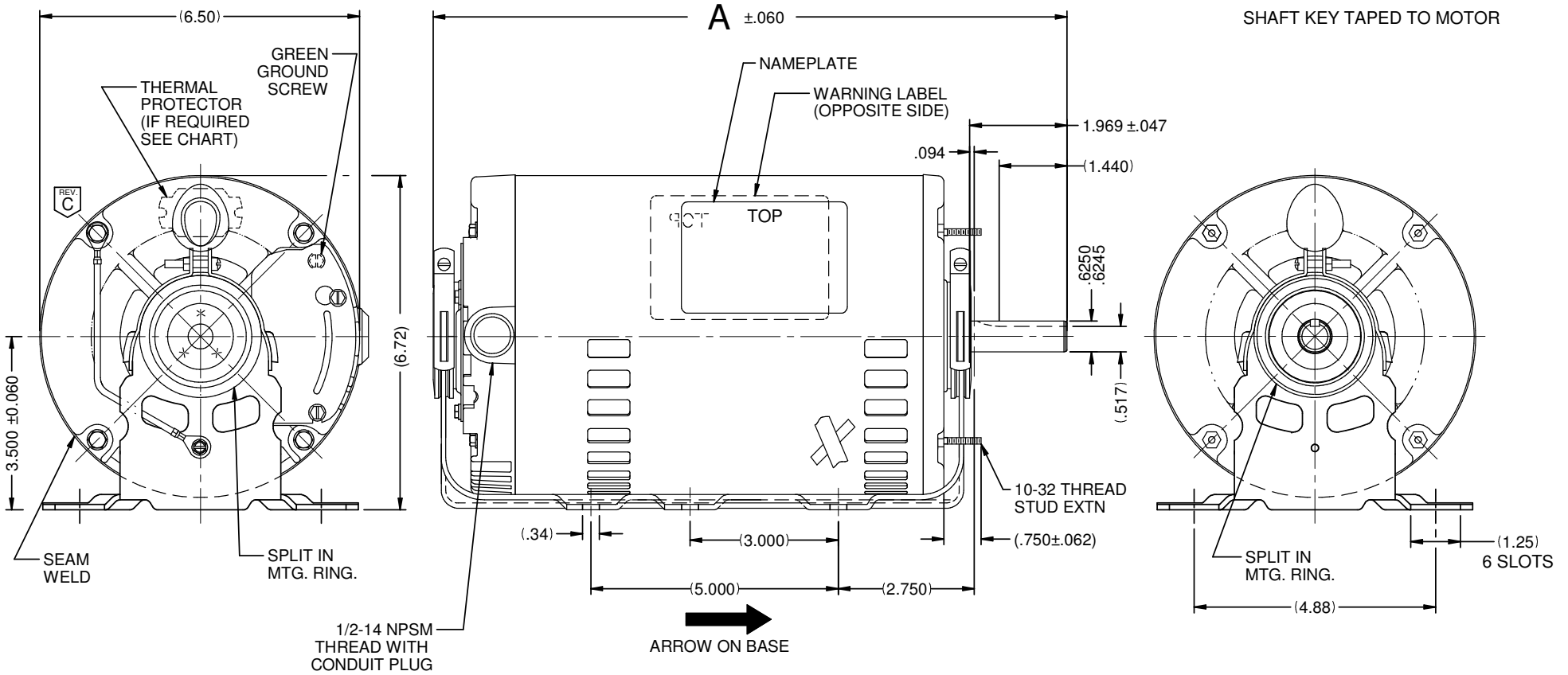


VAR	MODEL	CUSTOMER	CAT. NO.	A	B	C	D	HP	VOLTS	SF	AMPS	HZ	RPM	CONN VOLTS	PROT.	DESCRIPTION / REMARKS
001	P63ZZAHZ-1338	USEM	8490P	13.78	----	----	----	1.5	208-230/460	1.15	4.8-4.8/2.4	60	1725	----	AUTO	N56H, ODP



NIDEC MOTOR CORPORATION 16-Mar-18

ROTATION-REVERSIBLE, TO REVERSE ROTATION INTERCHANGE ANY TWO LINE LEADS.

REFER TO S.E.I.M. 24-1

REVISION RECORD FOR:	ECO E30649
CHANGED VIEW GROUND LEAD TO BEHIND OF THE BASE	

TOLERANCES ON DIMENSIONS (UNLESS OTHERWISE SPECIFIED)

INCHES
.XX = ±.010
.XXX = ±.005

mm

ANGLES X° = ±1°

NIDEC MOTOR CORPORATION

INFORMATION DISCLOSED ON THIS DOCUMENT IS CONSIDERED PROPRIETARY AND SHALL NOT BE REPRODUCED OR DISCLOSED WITHOUT WRITTEN CONSENT OF NIDEC MOTOR CORPORATION

REVISION DATE:
21-MAR-18

ISSUED BY: **C. LUGO**

ENGINEER APPROVED: **F. FLORES**

TITLE
CUSTOMER DETAIL DRAWING

CODE
V02

ITEM NO.
804244

REV
C

SHEET NUMBER
1 OF 4

DWG SIZE
B