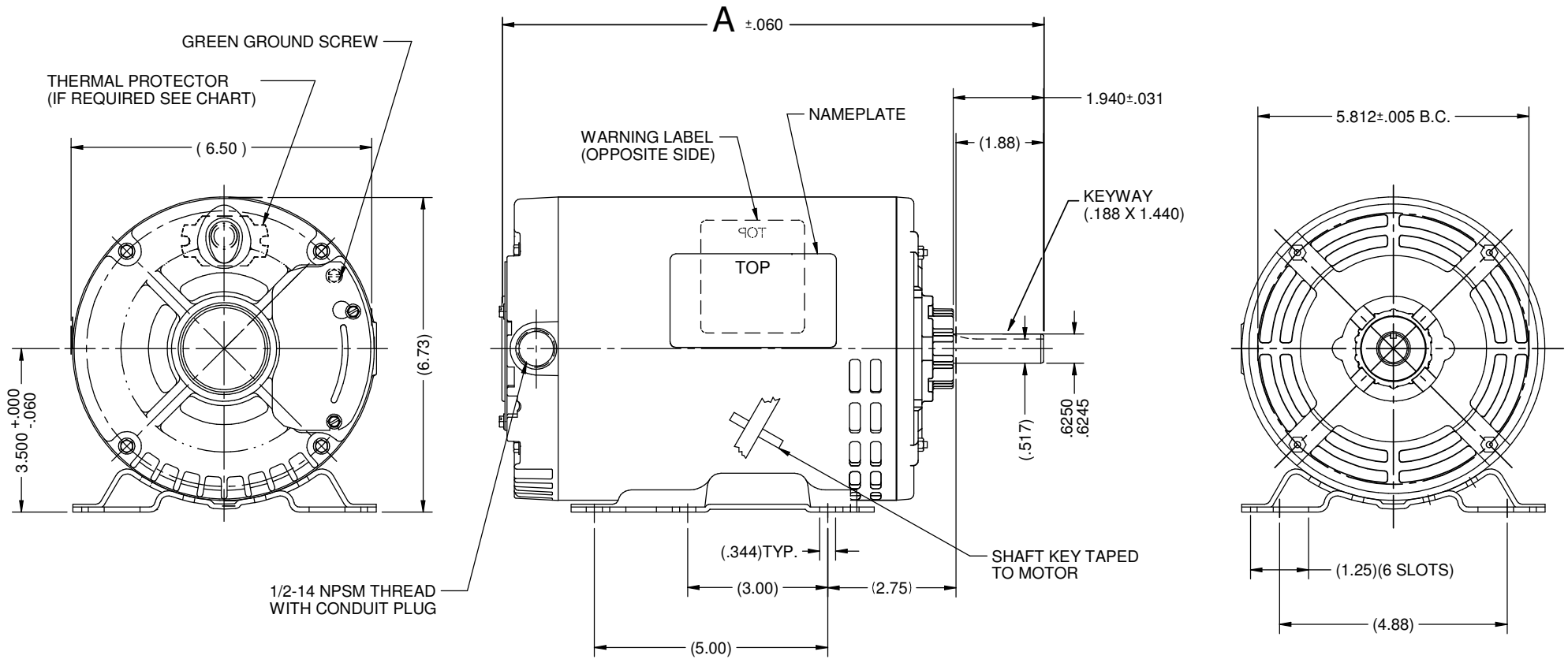


VAR	MODEL	CUSTOMER	PART No.	A	B	C	D	HP	VOLTS	SF	AMPS	HZ	RPM	PROTECTOR	DESCRIPTION / REMARKS
001	P63AJC-1341	USEM	D2P1AH	11.89	-----	-----	-----	2	208-230/460	1.15	6.0-5.4/2.7	60	3450	NONE	N56H ODP



ROTATION-REVERSIBLE, TO REVERSE ROTATION INTERCHANGE ANY TWO LINE LEADS.

REFER TO S.E.I.M. 24-1

NIDEC MOTOR CORPORATION 29-Jun-15

REVISION RECORD FOR: E23264  
DELETED REQ. CRIT. #1 AND RENUMBERED ON SHEET #3 & 4

TOLERANCES ON DIMENSIONS (UNLESS OTHERWISE SPECIFIED)

INCHES  
.XX = ± .010  
.XXX = ± .005

mm

ANGLES X° = ±1°

**NIDEC MOTOR CORPORATION**

INFORMATION DISCLOSED ON THIS DOCUMENT IS CONSIDERED PROPRIETARY AND SHALL NOT BE REPRODUCED OR DISCLOSED WITHOUT WRITTEN CONSENT OF NIDEC MOTOR CORPORATION

REVISION DATE:  
29-JUN-15

ISSUED BY: A. SANCHEZ

ENGINEER APPROVED: S. SCHINZING

TITLE  
CUSTOMER DETAIL DRAWING

CODE  
V02

ITEM NO.  
804378

REV  
A

SHEET NUMBER  
1 OF 4

DWG SIZE  
B