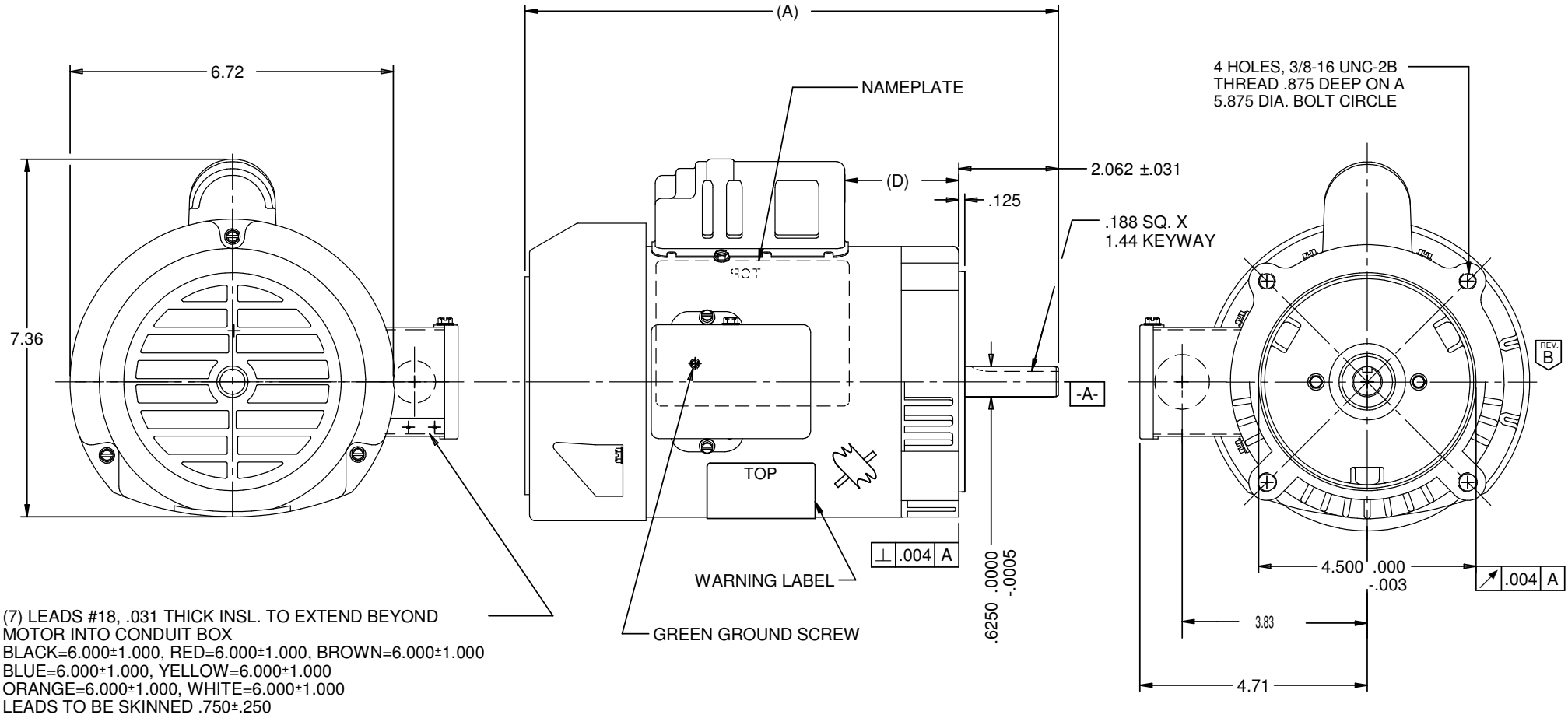


VAR	MODEL	CUSTOMER	CUSTOMER PN	A	B	C	D	HP	VOLTS	SF	AMPS	HZ	RPM	CONN VOLTS	PROT.	DESCRIPTION / REMARKS
001	C55JXKHM-4942	USEM	T13CA2JCR	11.03	-----	-----	3.07	1/3	115/208-230	1.15	6.6/3.0-3.3	60	1725	-----	AUTO	ROTATION REVERSIBLE, BALL BEARING

SHAFT KEY TAPED TO MOTOR



NIDEC MOTOR CORPORATION 15-Aug-18

REFER TO S.E.I.M. 24-1

REVISION RECORD FOR: ECO E31420
 CHANGED THE VIEW OF BOTH SCREWS TO S05820750 (SCREW WITHOUT SLOT).

TOLERANCES ON DIMENSIONS
 (UNLESS OTHERWISE SPECIFIED)

INCHES
 .XX = ± .010
 .XXX = ± .005

mm

ANGLES X° = ±1°

NIDEC MOTOR CORPORATION

INFORMATION DISCLOSED ON THIS DOCUMENT IS CONSIDERED PROPRIETARY AND SHALL NOT BE REPRODUCED OR DISCLOSED WITHOUT WRITTEN CONSENT OF NIDEC MOTOR CORPORATION

REVISION DATE:
 22-AUG-18

ISSUED BY: G. ISASSI

ENGINEER APPROVED: J. SALINAS

TITLE: CUSTOMER DETAIL DRAWING

CODE: V02
 ITEM NO.: 804454

REV: B
 SHEET NUMBER: 1 OF 6
 DWG SIZE: B