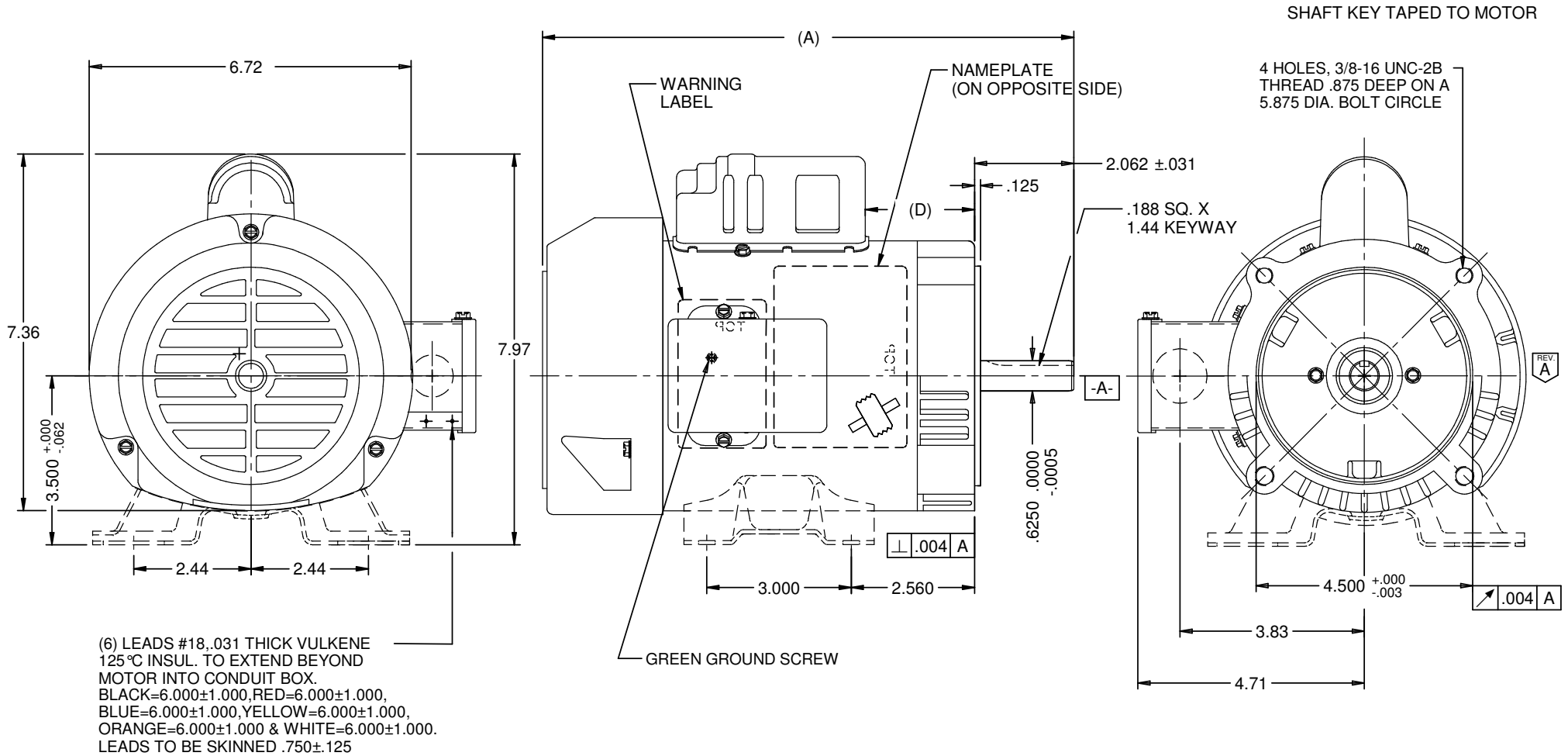


VAR	MODEL	CUSTOMER	CUSTOMER PN	A	B	C	D	HP	VOLTS	SF	AMPS	HZ	RPM	CONN VOLTS	PROT.	BASE	DESCRIPTION / REMARKS
001	C55KHR-4945	USEM	T13C2JCR	11.03	-----	-----	3.07	1/3	115/208-230	1.15	6.6/3.0-3.3	60	1725	-----	NONE	NO	ROTATION REVERSIBLE, BALL BEARING
002	C55KKT-4986	USEM	T13C2JC	11.03	-----	-----	3.07	1/3	115/208-230	1.15	6.6/3.0-3.3	60	1725	-----	NONE	YES	ROTATION REVERSIBLE, BALL BEARING



NIDEC MOTOR CORPORATION 15-Aug-18

REFER TO S.E.I.M. 24-1

REVISION RECORD FOR: ECO E31420	
CHANGED THE VIEW OF BOTH SCREWS TO S05820750 (SCREW WITHOUT SLOT).	
ISSUED BY: G. ISASSI	ENGINEER APPROVED: J. SALINAS

TOLERANCES ON DIMENSIONS (UNLESS OTHERWISE SPECIFIED)	
INCHES .XX = ±.010 .XXX = ±.005	mm
ANGLES X° = ±1°	

NIDEC MOTOR CORPORATION				REVISION DATE: 22-AUG-18	
INFORMATION DISCLOSED ON THIS DOCUMENT IS CONSIDERED PROPRIETARY AND SHALL NOT BE REPRODUCED OR DISCLOSED WITHOUT WRITTEN CONSENT OF NIDEC MOTOR CORPORATION				REV	DWG SIZE
TITLE: CUSTOMER DETAIL DRAWING		CODE: V02	ITEM NO.: 804480	1 OF 6	B