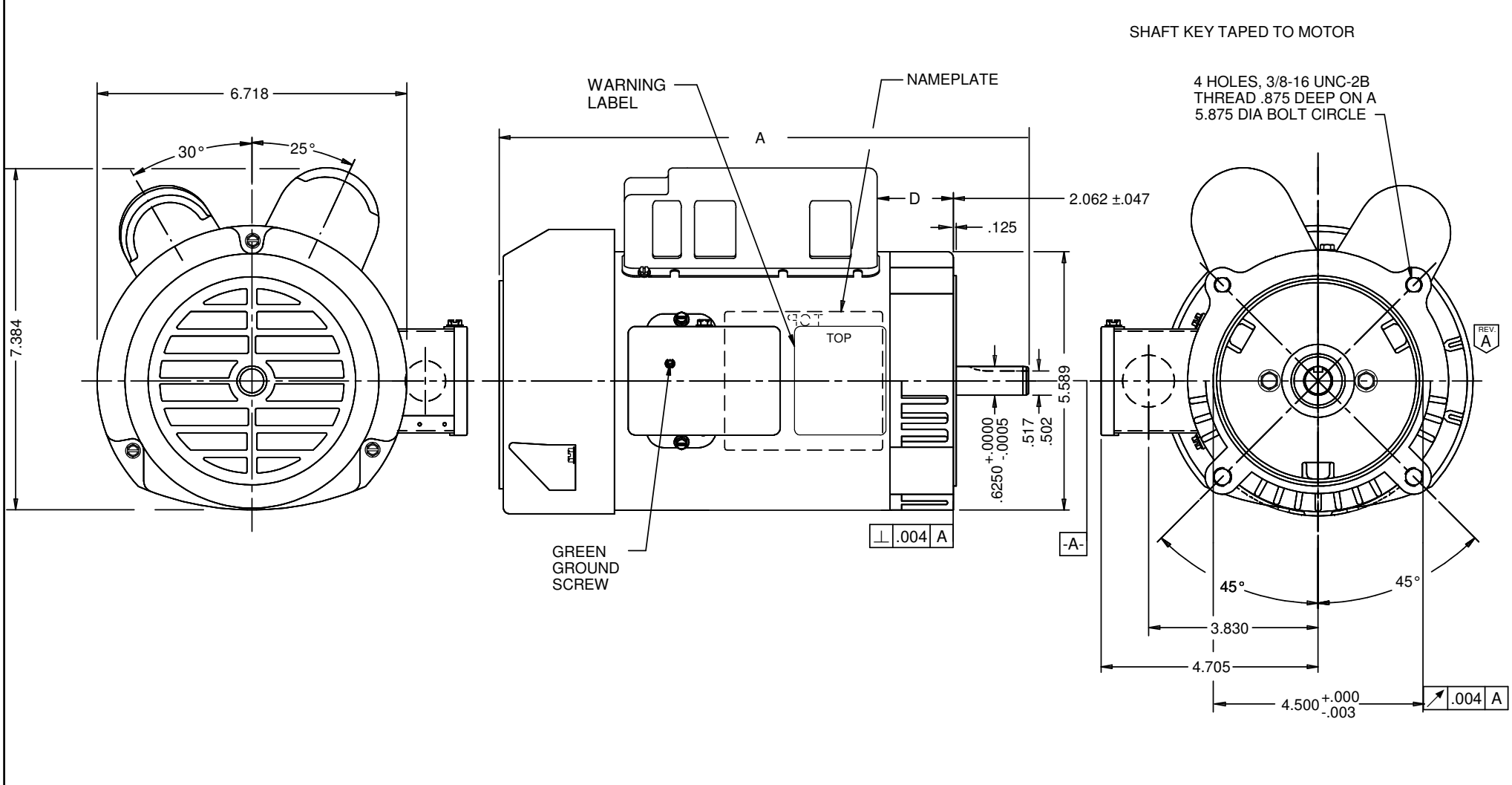


VAR	MODEL	CUSTOMER	CUSTOMER PN	SF	A	B	C	D	PROTECTOR	HP	VOLTS	AMPS	HZ	RPM	CONN VOLTS	ROTATION	DESCRIPTION / REMARKS
001	T55CDA-1224	USEM	T12C2ZCR	1.25	12.030	--	--	2.21	NONE	1/2	100-120/200-240	6.3-5.6/3.1-2.8	60 & 50	1725 & 1425	--	REVERSIBLE	BALL BEARING



NIDEC MOTOR CORPORATION 29-Aug-18

REFER TO S.E.I.M. 24-1

REVISION RECORD FOR:	ECO E31428
ISSUED BY:	J. ALVARADO
ENGINEER APPROVED:	J. SALINAS

TOLERANCES ON DIMENSIONS (UNLESS OTHERWISE SPECIFIED)	
INCHES	mm
.XX = ±.010	
.XXX = ±.005	
ANGLES X° = ±1°	

NIDEC MOTOR CORPORATION			
INFORMATION DISCLOSED ON THIS DOCUMENT IS CONSIDERED PROPRIETARY AND SHALL NOT BE REPRODUCED OR DISCLOSED WITHOUT WRITTEN CONSENT OF NIDEC MOTOR CORPORATION			
TITLE		CODE	ITEM NO.
CUSTOMER DETAIL DRAWING		V02	804507
REVISION DATE:	REV	SHEET NUMBER	DWG SIZE
15-SEP-18	A	1 OF 6	B