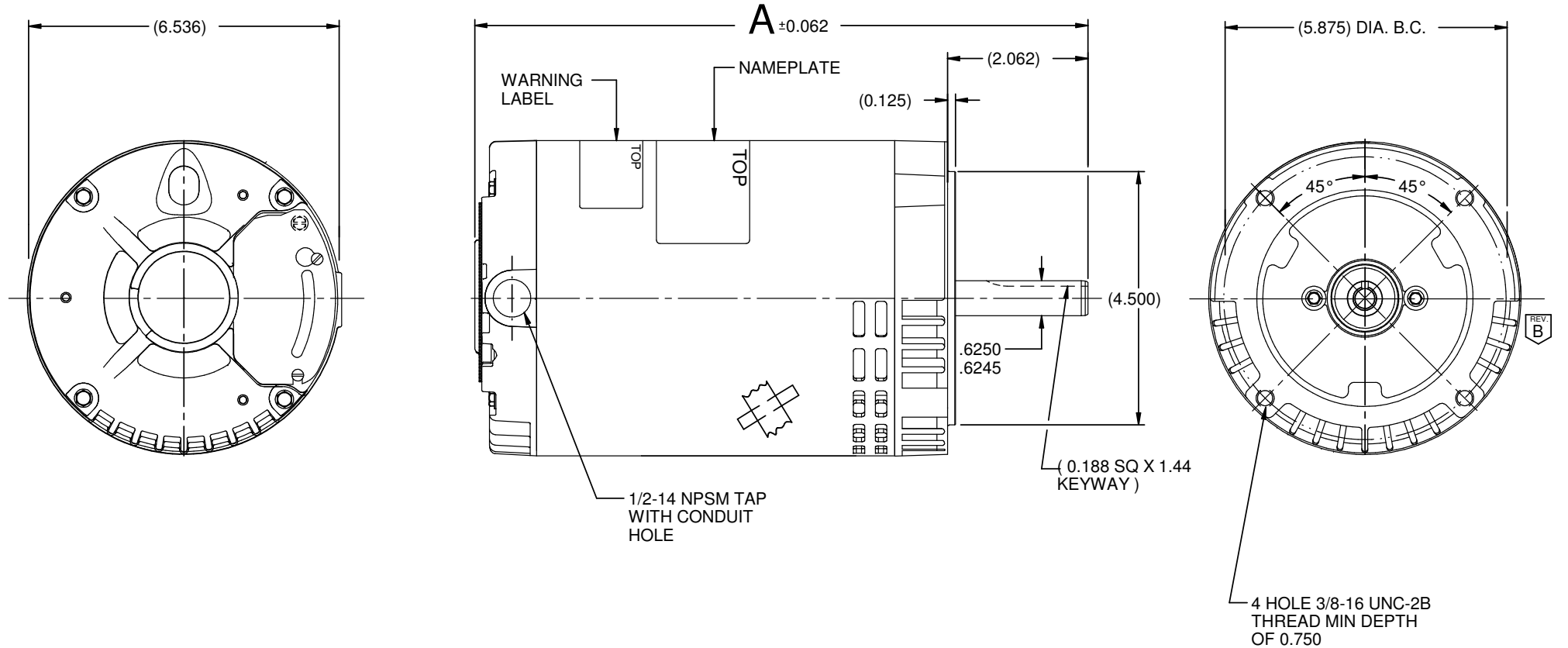


MODEL	CUSTOMER	CAT. NO.	A	B	C	D	HP	VOLTS	SF	AMPS	HZ	RPM	CONN VOLTS	PROT.	DESCRIPTION / REMARKS
S63HYV-8161	WHOLESALE HAC	D14B3NCR	10.858	-----	-----	-----	1/4	115	1.35	5.5	60	1140	115	NONE	N56C, ODP, CCW LEAD END REV.

SHAFT KEY TAPED TO MOTOR



NIDEC MOTOR CORPORATION 29-Aug-18

REFER TO S.E.I.M. 24-1

REVISION RECORD FOR: ECO E31428		TOLERANCES ON DIMENSIONS (UNLESS OTHERWISE SPECIFIED)		NIDEC MOTOR CORPORATION INFORMATION DISCLOSED ON THIS DOCUMENT IS CONSIDERED PROPRIETARY AND SHALL NOT BE REPRODUCED OR DISCLOSED WITHOUT WRITTEN CONSENT OF NIDEC MOTOR CORPORATION				REVISION DATE: 18-SEP-18		
SCREW VIEW WAS UPDATED		INCHES .XX = ± .010 .XXX = ± .005	mm					TITLE: CUSTOMER DETAIL DRAWING		CODE: V02
ISSUED BY: J. ALVARADO	ENGINEER APPROVED: J. SALINAS	ANGLES X° = ± 1°								SOLIDEDGE