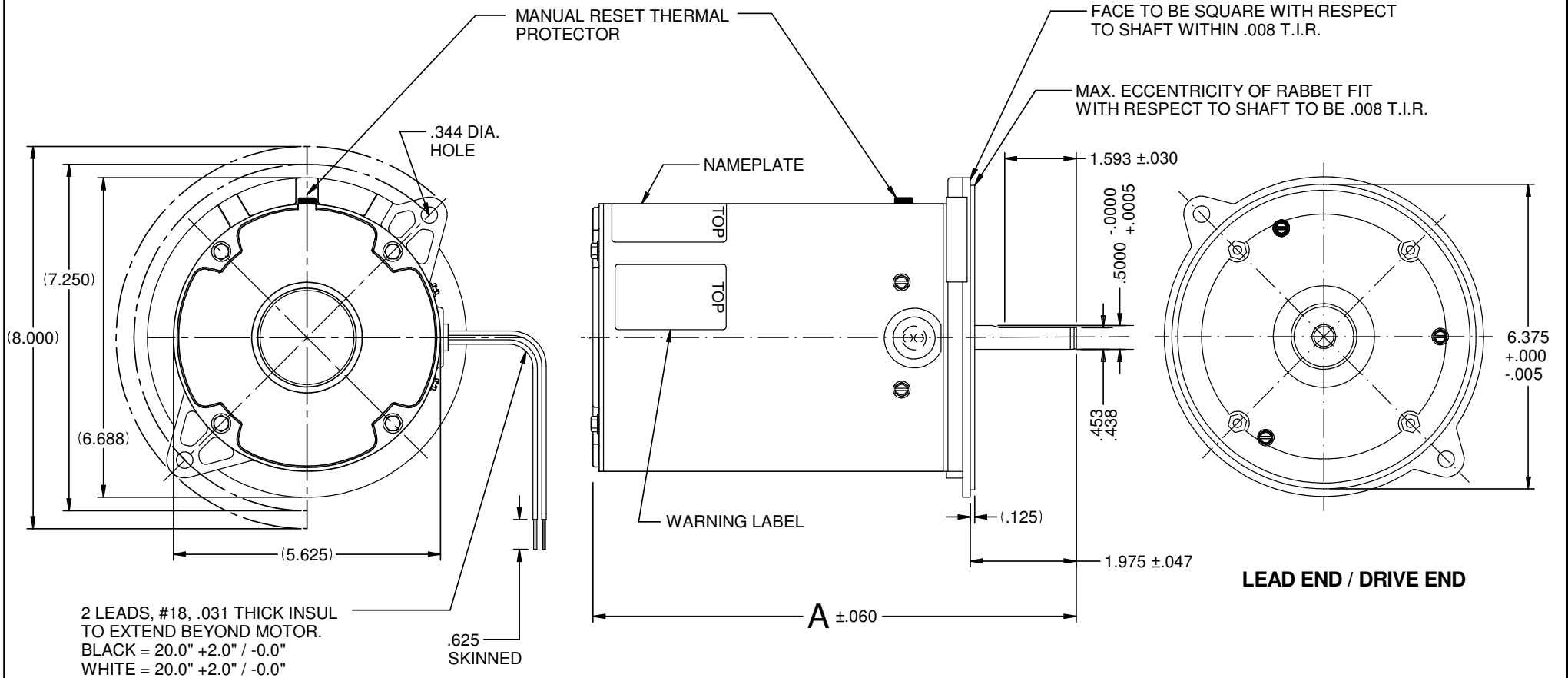


VAR	MODEL	CUSTOMER	CAT. NO.	A	B	C	D	HP	VOLTS	SF	AMPS	HZ	RPM	CONN VOLTS	PROT.	DESCRIPTION / REMARKS
001	S55KXSHF-5519	STANDARD	3196	8.818	-----	-----	-----	1/8	115	1.0	2.4	60	1725	---	MANUAL	



ROTATION: CW LEAD END REV

REFER TO S.E.I.M. 24-1

NIDEC MOTOR CORPORATION 11-Aug-15

CREATED DRAWING.	REVISION RECORD FOR:	JC 70125
ISSUED BY:	ENGINEER APPROVED:	
G. ISASSI	L. BACHMAN	

TOLERANCES ON DIMENSIONS (UNLESS OTHERWISE SPECIFIED)	
INCHES .XX = ±.010 .XXX = ±.005	mm
ANGLES X° = ±1°	

NIDEC MOTOR CORPORATION				
INFORMATION DISCLOSED ON THIS DOCUMENT IS CONSIDERED PROPRIETARY AND SHALL NOT BE REPRODUCED OR DISCLOSED WITHOUT WRITTEN CONSENT OF NIDEC MOTOR CORPORATION				REVISION DATE: 24-JUL-15
TITLE	CODE	ITEM NO.	REV	SHEET NUMBER
CUSTOMER DETAIL DRAWING	V02	806727	--	1 OF 4
				DWG SIZE B