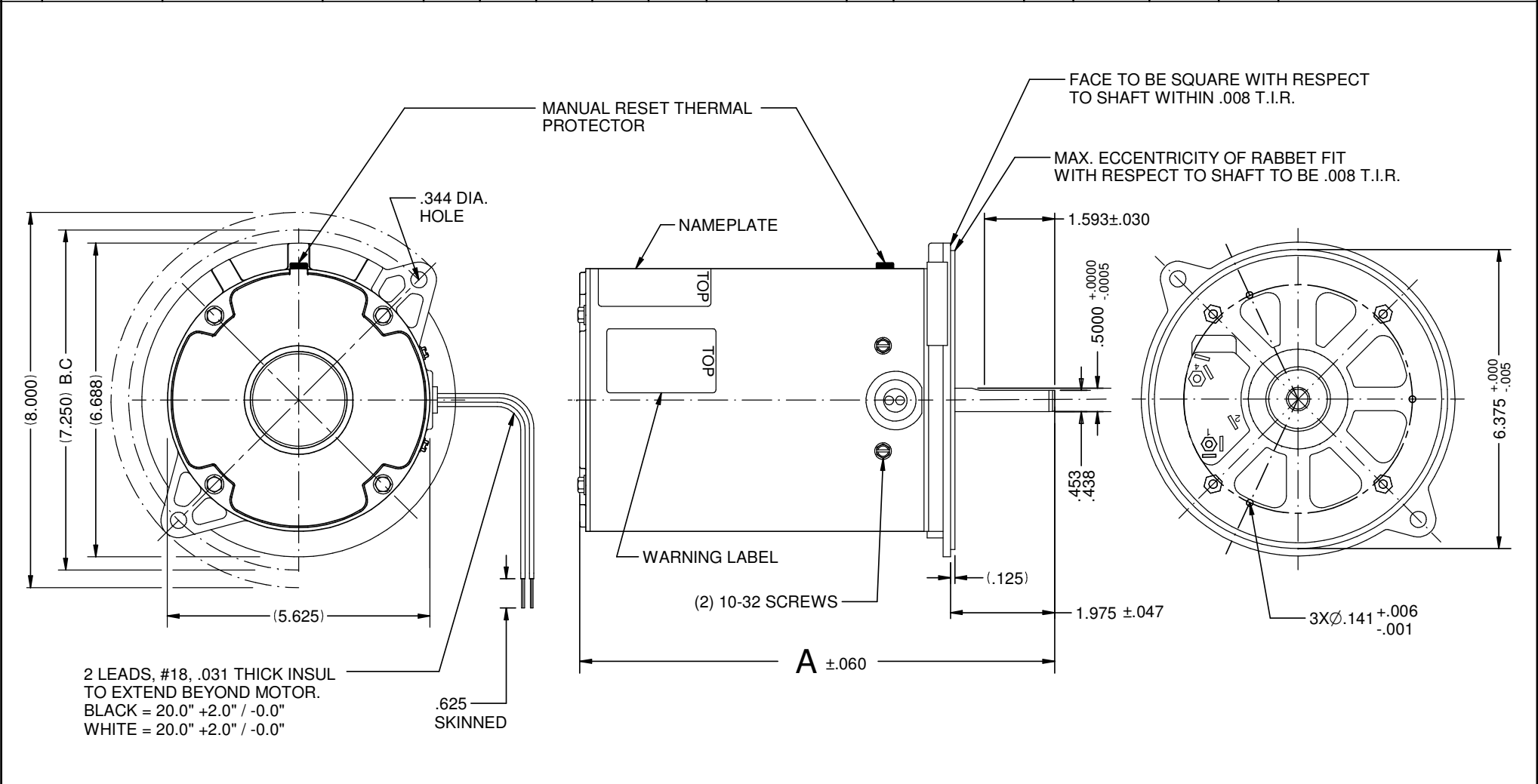


VAR	MODEL	CUSTOMER	CAT. NO.	A	B	C	D	HP	VOLTS	SF	AMPS	HZ	RPM	CONN VOLTS	PROT.	DESCRIPTION / REMARKS
001	S55XTBB-7618	STANDARD	3252	8.818	-----	-----	-----	1/6	115	1.0	3.1	60	1725	---	MANUAL	



NIDEC MOTOR CORPORATION 13-Aug-15				*COVER PLATE KIT SUPPLIED IN CARTON				ROTATION: CW LEAD END REV				REFER TO S.E.I.M. 24-1									
REVISION RECORD FOR: JC 70107				TOLERANCES ON DIMENSIONS (UNLESS OTHERWISE SPECIFIED)				NIDEC MOTOR CORPORATION													
CREATED DRAWING.								INFORMATION DISCLOSED ON THIS DOCUMENT IS CONSIDERED PROPRIETARY AND SHALL NOT BE REPRODUCED OR DISCLOSED WITHOUT WRITTEN CONSENT OF NIDEC MOTOR CORPORATION						REVISION DATE : 03-AUG-15							
ISSUED BY : G. ISASSI		ENGINEER APPROVED : L. BACHMAN		INCHES .XX = ± .010 .XXX = ±.005		mm		TITLE CUSTOMER DETAIL DRAWING				CODE V02		ITEM NO. 806853		REV --		SHEET NUMBER 1 OF 4		DWG SIZE B	
				ANGLES X°= ±1°																	