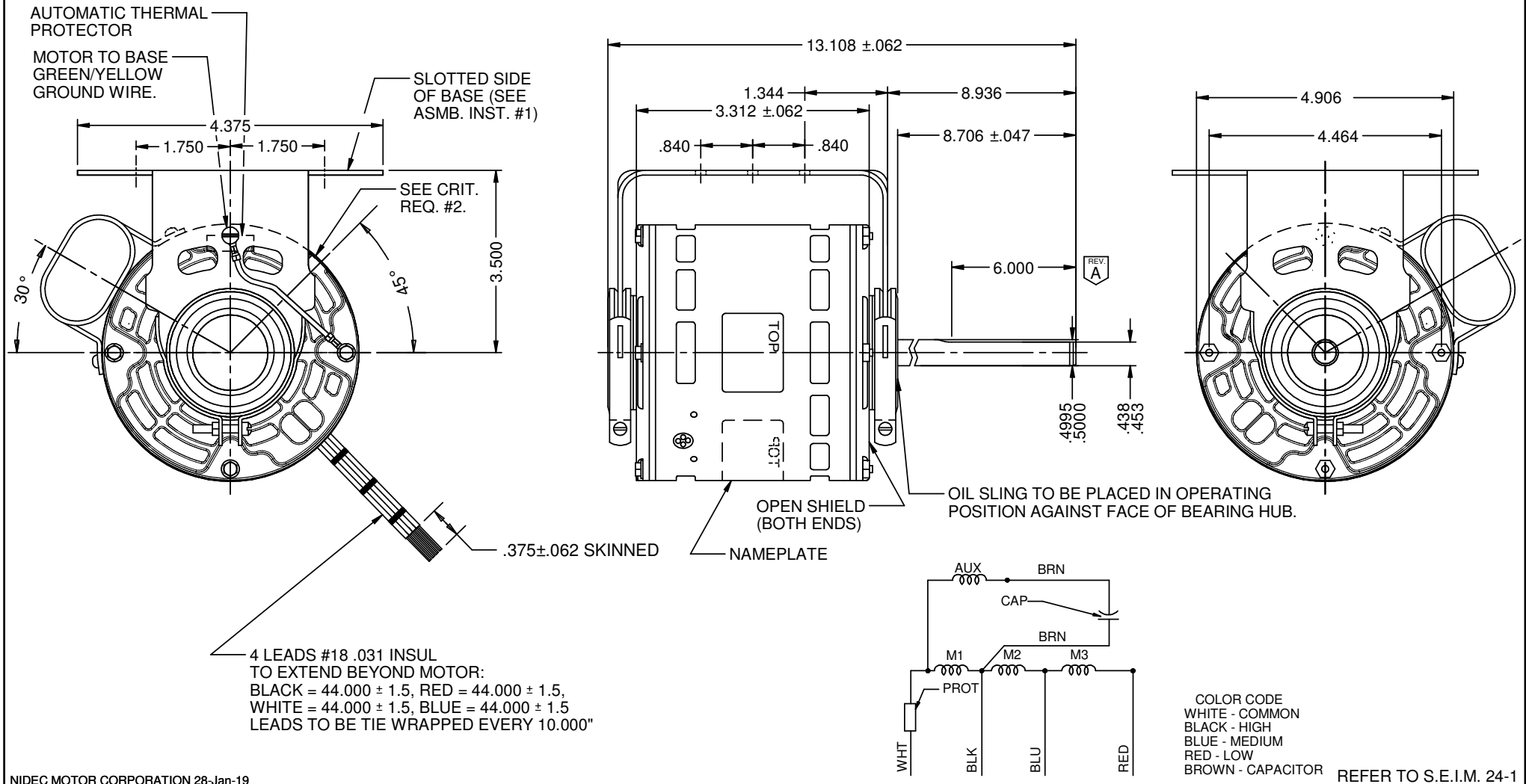


MODEL	REF	CUSTOMER	HP	VOLTS	AMPS	HZ	RPM	ROTATION	CATALOG NO.	DESCRIPTION / REMARKS
K48HXSTY-3509		STANDARD	1/20	115	.55	60	1100/3 SPD	CW LEAD END	1676	MOTOR TO BE MOUNTED IN A HORIZONTAL POSITION ONLY.



NIDEC MOTOR CORPORATION 28-Jan-19

REVISION RECORD FOR: ECO - E33615	
CHANGED SHAFT FLAT DISTANCE FROM 4.000 TO 6.000	
ISSUED BY: A. SAUCEDO	ENGINEER APPROVED: P. RODRIGUEZ

DIMENSIONS ARE FOR REFERENCE ONLY UNLESS TOLERANCE IS SPECIFIED.

NIDEC MOTOR CORPORATION			
INFORMATION DISCLOSED ON THIS DOCUMENT IS CONSIDERED PROPRIETARY AND SHALL NOT BE REPRODUCED OR DISCLOSED WITHOUT WRITTEN CONSENT OF NIDEC MOTOR CORPORATION			REVISION DATE: 28-JAN-19
TITLE: CUSTOMER DETAIL DRAWING	CODE: V02	ITEM NO.: 807115	REV: A
		SHEET NUMBER: 1 OF 3	DWG SIZE: B