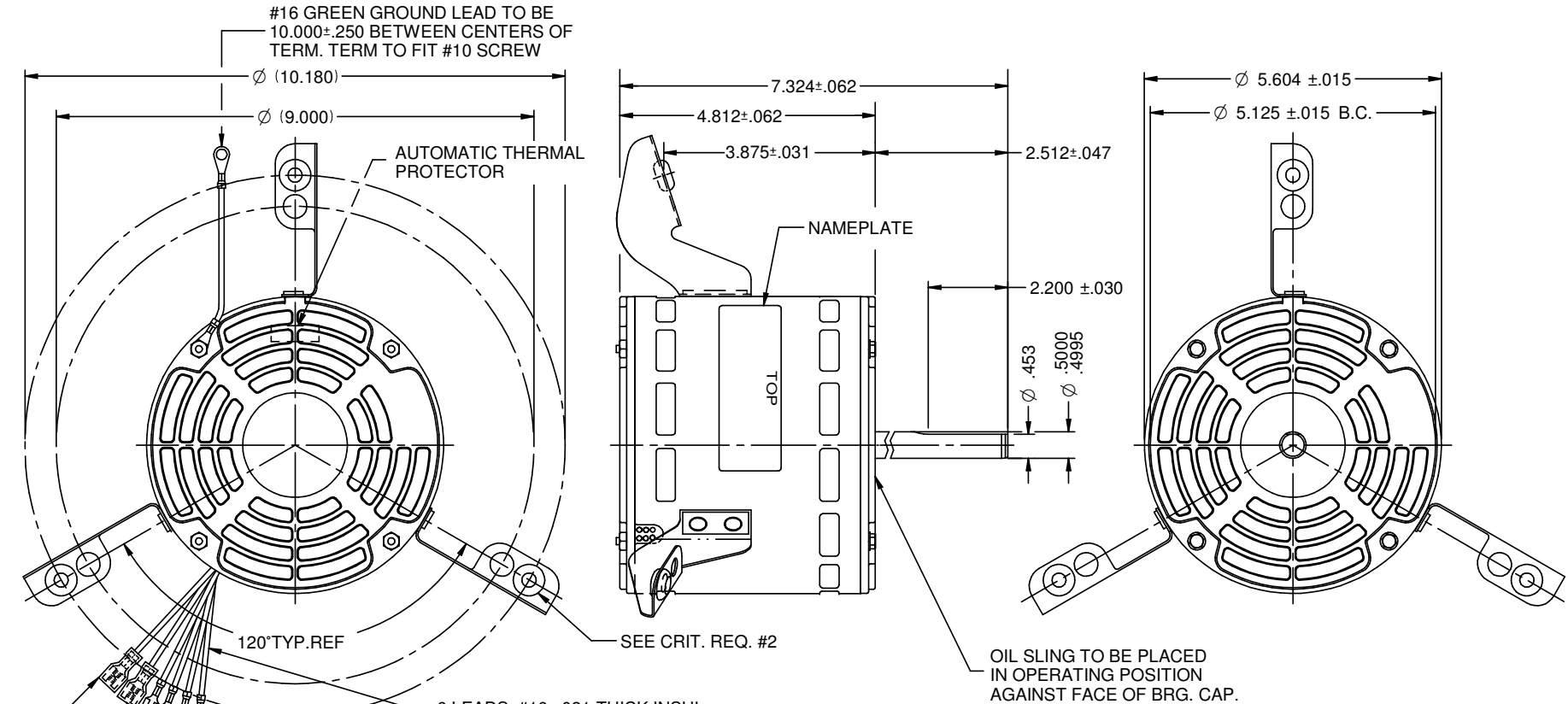
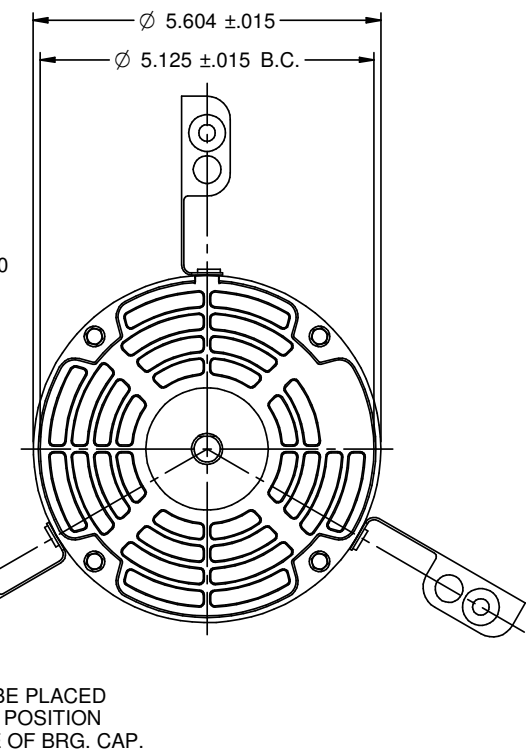
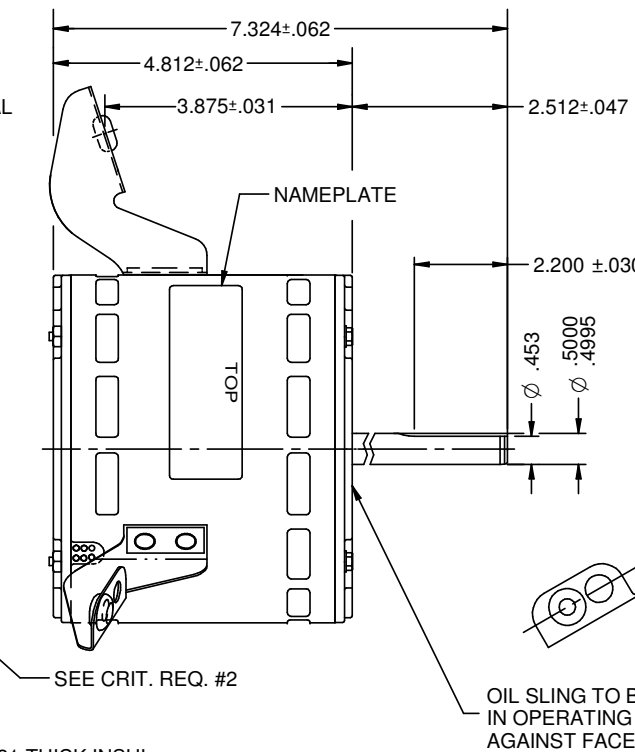
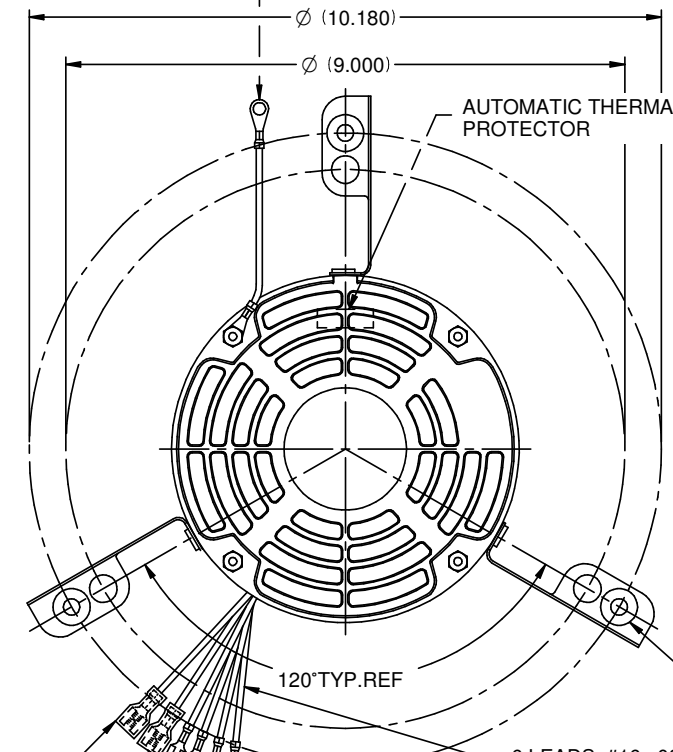


MODEL	REF	CUSTOMER	HP	VOLTS	AMPS	HZ	RPM	ROTATION	CATALOG NO.	DESCRIPTION / REMARKS
K55HXSTB-7251	A-21381	STANDARD	1/3	208-230	1.9	60	825/3 SPD	CCW LEAD END	8052	K55 HUBLESS SELF ALIGN BRG. OPEN



#16 GREEN GROUND LEAD TO BE 10.000±.250 BETWEEN CENTERS OF TERM. TERM TO FIT #10 SCREW



6 LEADS, #16, .031 THICK INSUL 105° PVC 35D DUROMETER TO EXTEND BEYON MOTOR:
 BLK=36.000+2-0, YEL=36.000+2-0, RED=36.000+2-0, ORG=36.000+2-0, PUR=18.000+2-0, PUR=18.000+2-0.

(2) .250 STRAIGHT TYPE Q.C TERMS. WITH BLUE NYLON HOUSING ON PUR. LEADS ONLY.

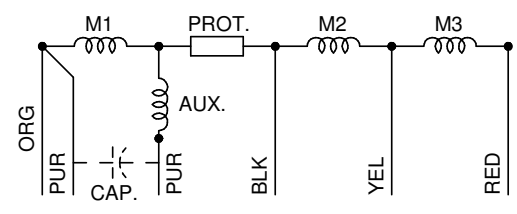
(4) .250 STRAIGHT TYPE Q.C TERMS. WITH INSUL. GRIP

CAPACITOR: 15MFD, 370 VAC, CONNECTED BETWEEN (2) .250 STRAIGHT TYPE Q.C TERMS. WITH BLUE NYLON 6/6 HOUSING ON PURPLE LEADS

NOTE:
 1.) INNER BOLT CIRCLE DIA. DIM. IS FOR MANUFACTURING REFERENCE ONLY.

SHIPPED DETACHED (3) EYELETS E30-256813A000

15 MFD 370 VAC CAPACITOR



REFER TO S.E.I.M. 24-1

NIDEC MOTOR CORPORATION 13-Sep-19

REVISION RECORD FOR: ECO: E35264	
PAGE 3: NOTE 1 IS EDIT TO: 1.) (3) EYELETS E30256813A000 SHOULD BE INSTALLED	
ISSUED BY: C. RODRIGUEZ	ENGINEER APPROVED: Z. TREVIÑO

DIMENSIONS ARE FOR REFERENCE ONLY

UNLESS TOLERANCE IS SPECIFIED

NIDEC MOTOR CORPORATION			
INFORMATION DISCLOSED ON THIS DOCUMENT IS CONSIDERED PROPRIETARY AND SHALL NOT BE REPRODUCED OR DISCLOSED WITHOUT WRITTEN CONSENT OF NIDEC MOTOR CORPORATION			
TITLE			REVISION DATE:
CUSTOMER DETAIL DRAWING			13-SEP-19
CODE	ITEM NO.	REV	SHEET NUMBER
V02	807180	B	1 OF 3
			DWG SIZE
			B