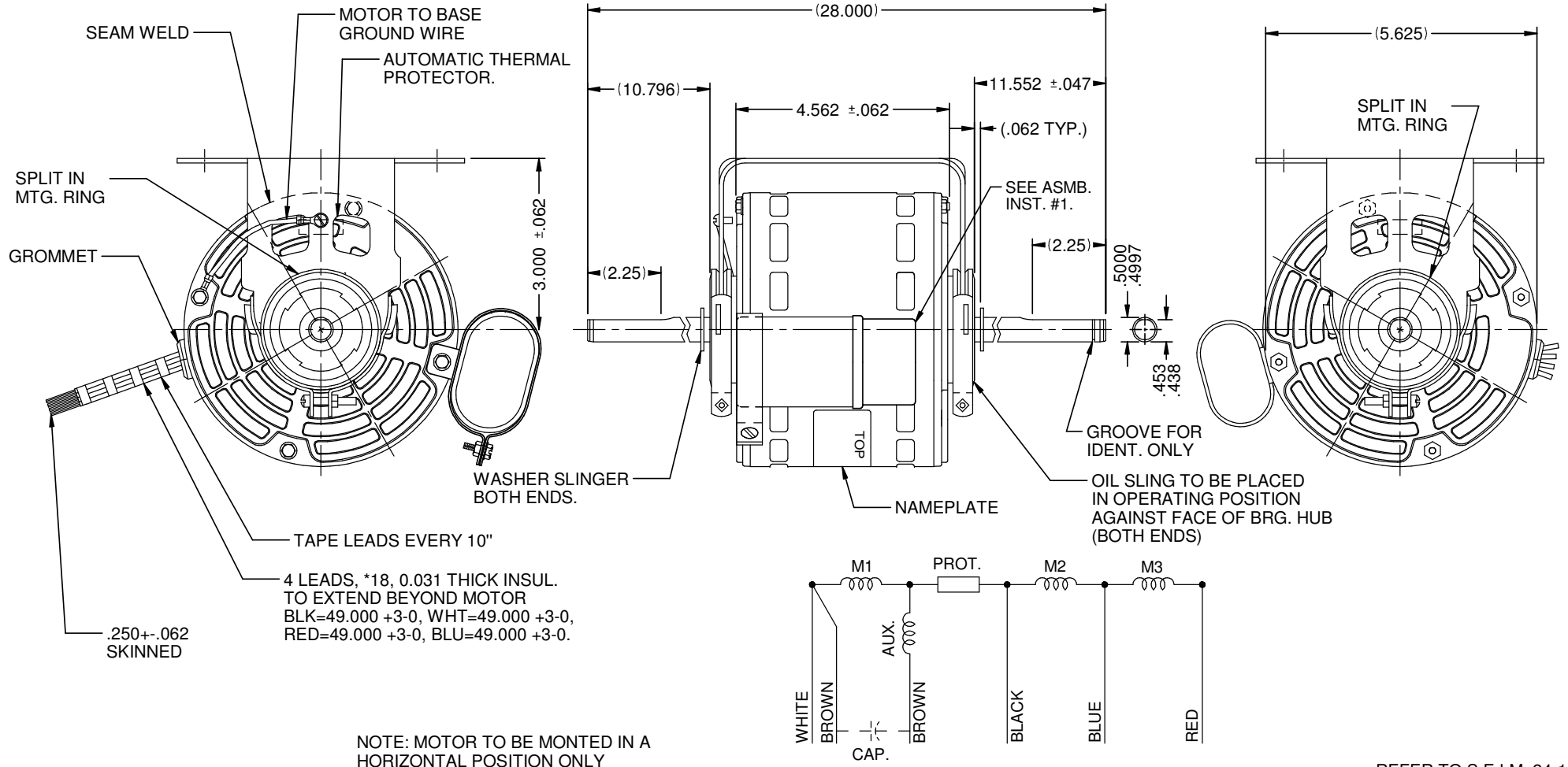


MODEL	REF	CUSTOMER	HP	VOLTS	AMPS	HZ	RPM	ROTATION	CUSTOMER PN	DESCRIPTION / REMARKS
K55HXRND-2264	C41766	WHOLESALE HAC	1/8	115	1.65	60	775/3 SPD	CC.W. LEAD END	1416	K55,RES-MTD., SELF ALIGN, OPEN.



NIDEC MOTOR CORPORATION 06-Oct-15

REFER TO S.E.I.M. 24-1

REVISION RECORD FOR:	E24014
ADDED INST. ASMB. #4 IN PAGE 3.	
ISSUED BY:	A. DEL ANGEL
ENGINEER APPROVED:	A. VILLANUEVA

TOLERANCES ON DIMENSIONS (UNLESS OTHERWISE SPECIFIED)	
INCHES .XX = ±.010 .XXX = ±.005	mm
ANGLES X° = ±1°	

NIDEC MOTOR CORPORATION			
INFORMATION DISCLOSED ON THIS DOCUMENT IS CONSIDERED PROPRIETARY AND SHALL NOT BE REPRODUCED OR DISCLOSED WITHOUT WRITTEN CONSENT OF NIDEC MOTOR CORPORATION			REVISION DATE: 06-OCT-15
TITLE	CODE	ITEM NO.	REV
CUSTOMER DETAIL DRAWING	V02	807557	A
SHEET NUMBER		DWG SIZE	
1 OF 3		B	