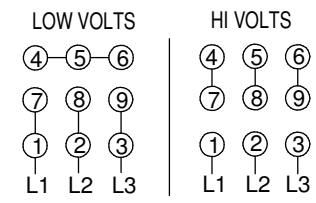
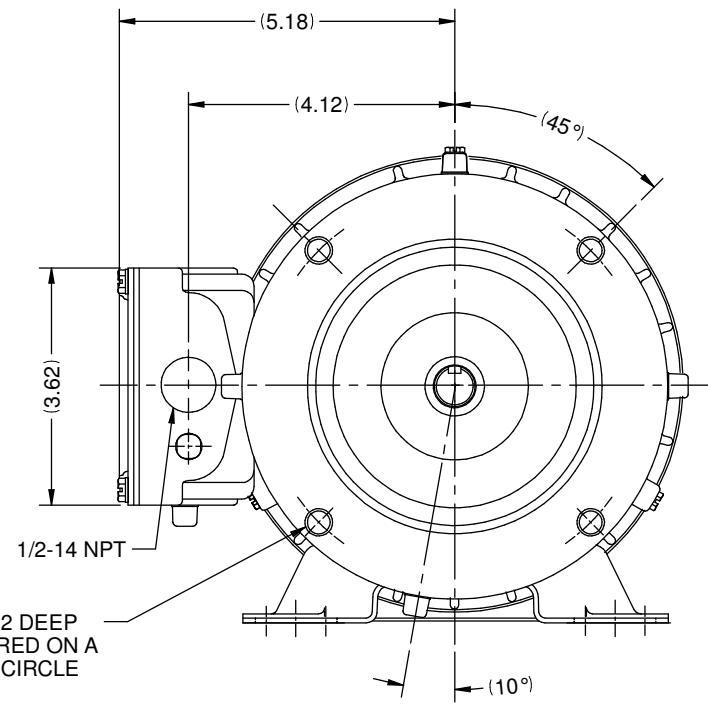
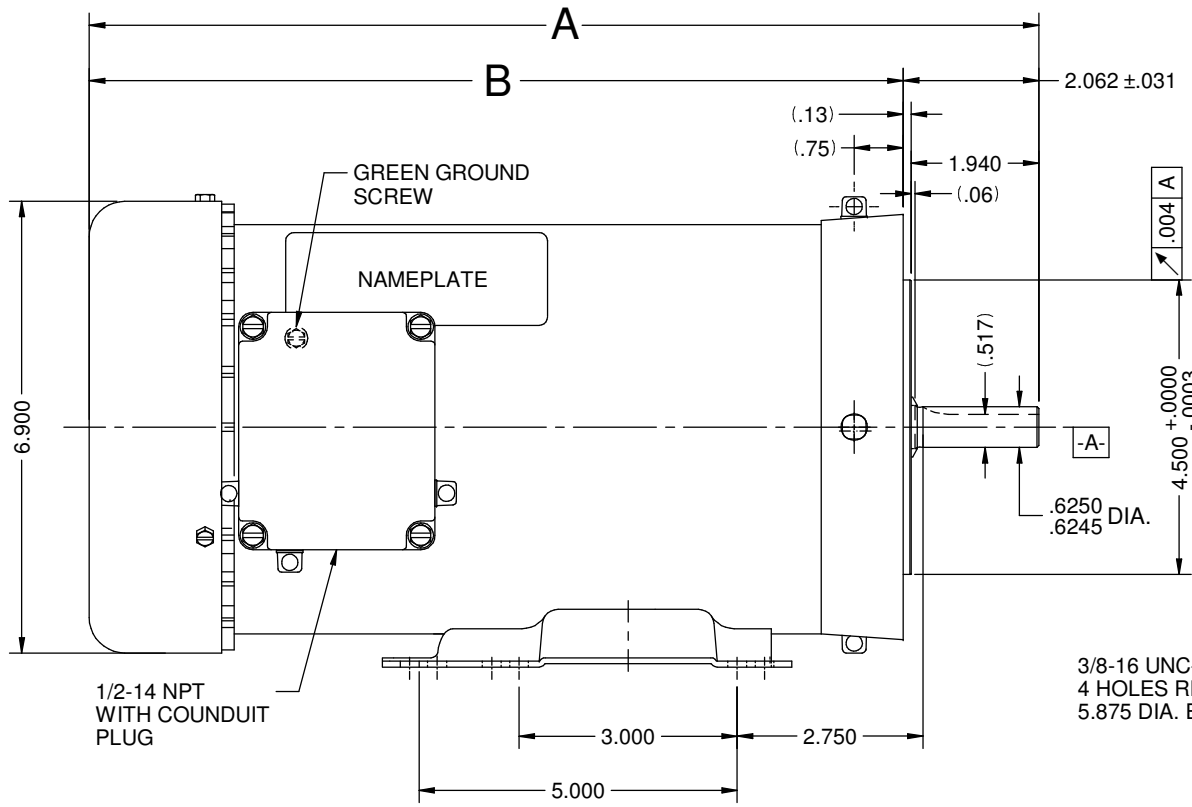


VAR	MODEL	CUSTOMER	PART NO.	A	B	C	D	HP	VOLTS	SF	AMPS	HZ	RPM	PROTECTOR	DESCRIPTION / REMARKS
001	P63TLG-1447	USEM	WDP2P2AHC	14.540	12.478	-----	-----	2.0	208-230/460	1.15	7.0-7.0/3.5	60	1725	NONE	N56HC, TEFC



NOTE:
303 STAINLESS STEEL
SHAFT KEY SHIPPED
WITH MOTOR.

TO REVERSE ROTATION INTERCHANGE
ANY TWO LINE LEADS.

REFER TO S.E.I.M. 24-1

NIDEC MOTOR CORPORATION 16-Jan-17

REVISION RECORD FOR: ECO E27745	
DELETED CRITICAL REQ. #10	
ISSUED BY: C.ALMAGUER	ENGINEER APPROVED: T.BOSSALLER

TOLERANCES ON DIMENSIONS (UNLESS OTHERWISE SPECIFIED)	
INCHES XX = ±.010 XXX = ±.005	mm
ANGLES X° = ±1°	

NIDEC MOTOR CORPORATION			
INFORMATION DISCLOSED ON THIS DOCUMENT IS CONSIDERED PROPRIETARY AND SHALL NOT BE REPRODUCED OR DISCLOSED WITHOUT WRITTEN CONSENT OF NIDEC MOTOR CORPORATION			
TITLE		CODE	ITEM NO.
CUSTOMER DETAIL DRAWING		V02	809775
REV	SHEET NUMBER	DWG SIZE	REVISION DATE:
B	1 OF 4	B	16-JAN-17