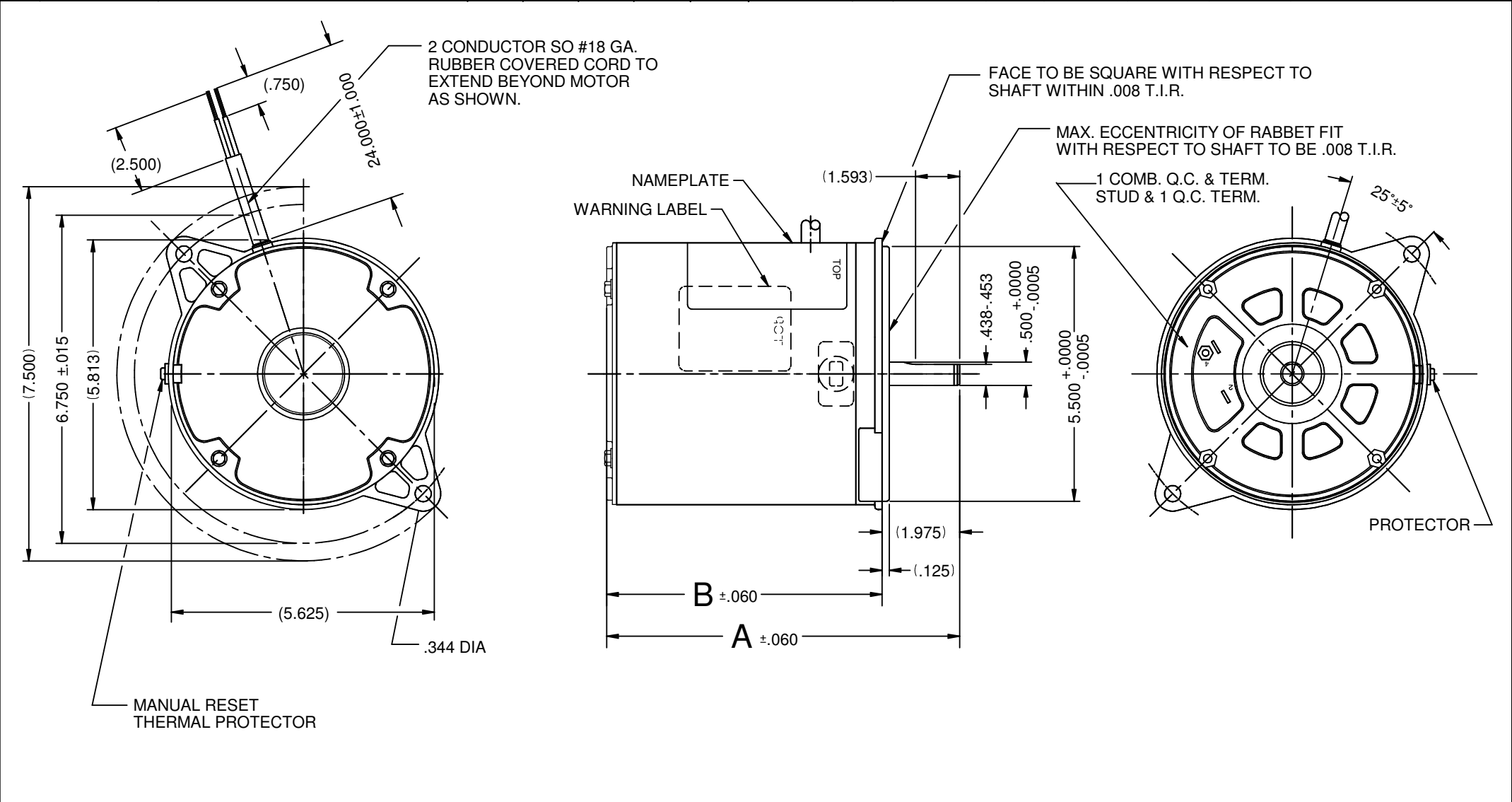


VAR	MODEL	CUSTOMER	CUSTOMER PN.	A	B	C	D	HP	VOLTS	SF	AMPS	HZ	RPM	CONN VOLTS	PROT.	DESCRIPTION / REMARKS
001	S55KXRNZ-8169	WHOLESALE-FLUID SYSTEMS	1011	8.318	6.348	--	--	1/7	230/240	--	1.3	50	2850	--	MANUAL	48M



NIDEC MOTOR CORPORATION 15-Feb-16				ROTATION: CCW DRIVE END				REFER TO S.E.I.M. 24-1					
REVISION RECORD FOR: JC 70669				DIMENSIONS ARE FOR REFERENCE ONLY	NIDEC MOTOR CORPORATION								
CREATED DRAWING.					INFORMATION DISCLOSED ON THIS DOCUMENT IS CONSIDERED PROPRIETARY AND SHALL NOT BE REPRODUCED OR DISCLOSED WITHOUT WRITTEN CONSENT OF NIDEC MOTOR CORPORATION						REVISION DATE : 04-FEB-16		
					UNLESS TOLERANCE IS SPECIFIED	TITLE		CODE	ITEM NO.		REV	SHEET NUMBER	DWG SIZE
ISSUED BY : G. ISASSI		ENGINEER APPROVED : L. BACHMAN				CUSTOMER DETAIL DRAWING		V02	809784		--	1 OF 4	B