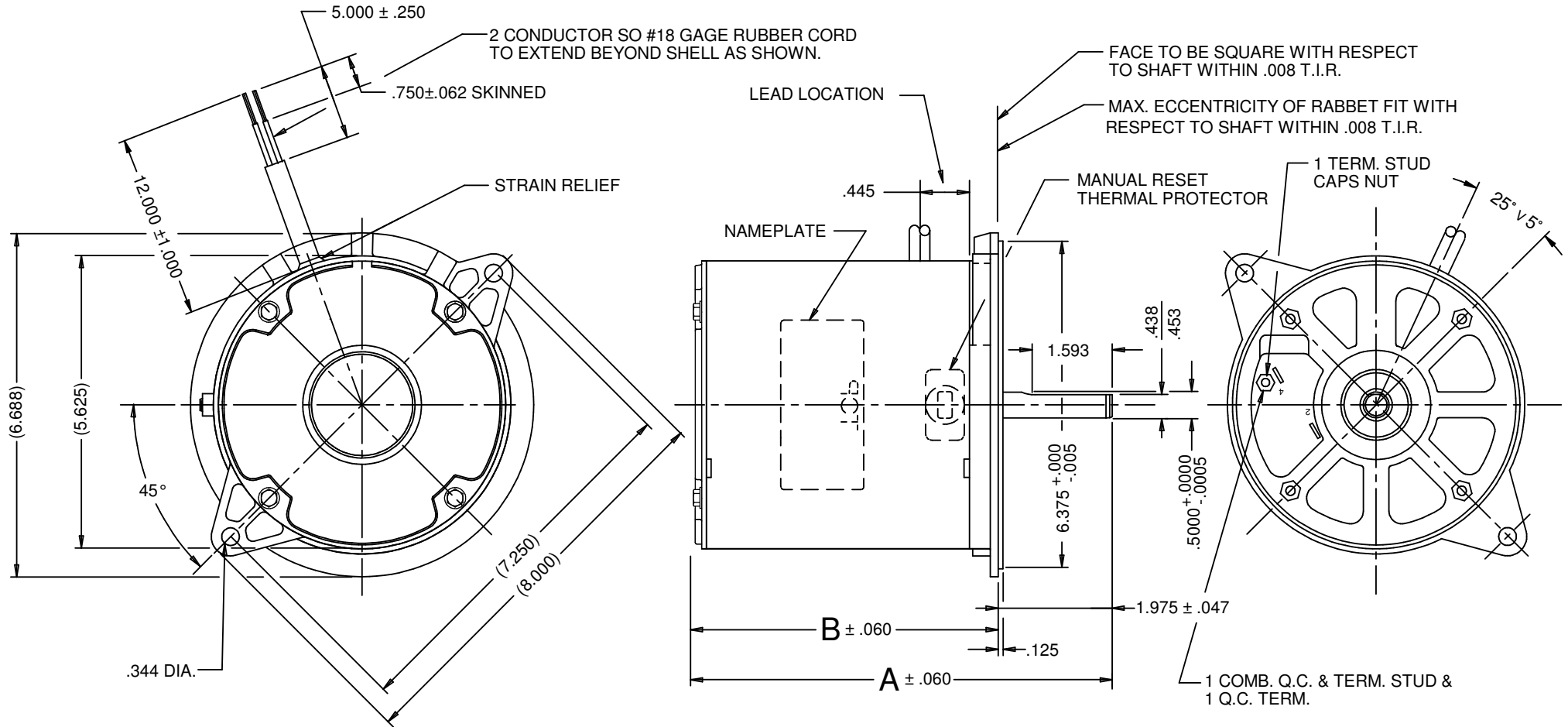


VAR	MODEL	CUSTOMER	CUSTOMER PN.	A	B	C	D	HP	VOLTS	SF	AMPS	HZ	RPM	CONN VOLTS	PROT.	DESCRIPTION / REMARKS
001	SD55KXFFR-3466	STANDARD CANADA	3466C	7.818	5.843	--	--	1/7	115	--	2.7	60	3450	--	MANUAL	48M



NIDEC MOTOR CORPORATION 01-Nov-16

REFER TO S.E.I.M. 24-1

REVISION RECORD FOR: E27142		TOLERANCES ON DIMENSIONS (UNLESS OTHERWISE SPECIFIED)		NIDEC MOTOR CORPORATION			
DELETED CRITICAL REQ. #5 AND UPDATED CRITICAL REQ. #4 (PAGE 3 & 4).		INCHES XX = ± .010 XXX = ± .005		mm		INFORMATION DISCLOSED ON THIS DOCUMENT IS CONSIDERED PROPRIETARY AND SHALL NOT BE REPRODUCED OR DISCLOSED WITHOUT WRITTEN CONSENT OF NIDEC MOTOR CORPORATION	
REENUMBER CRITICAL REQ.		ANGLES X° = ± 1°		TITLE		REVISION DATE:	01-NOV-16
ISSUED BY:	ENGINEER APPROVED:	CUSTOMER DETAIL DRAWING		CODE	ITEM NO.	REV	SHEET NUMBER
B. ANDRADE	M. SCHUETTE			V02	810247	B	1 OF 4
							DWG SIZE
							B