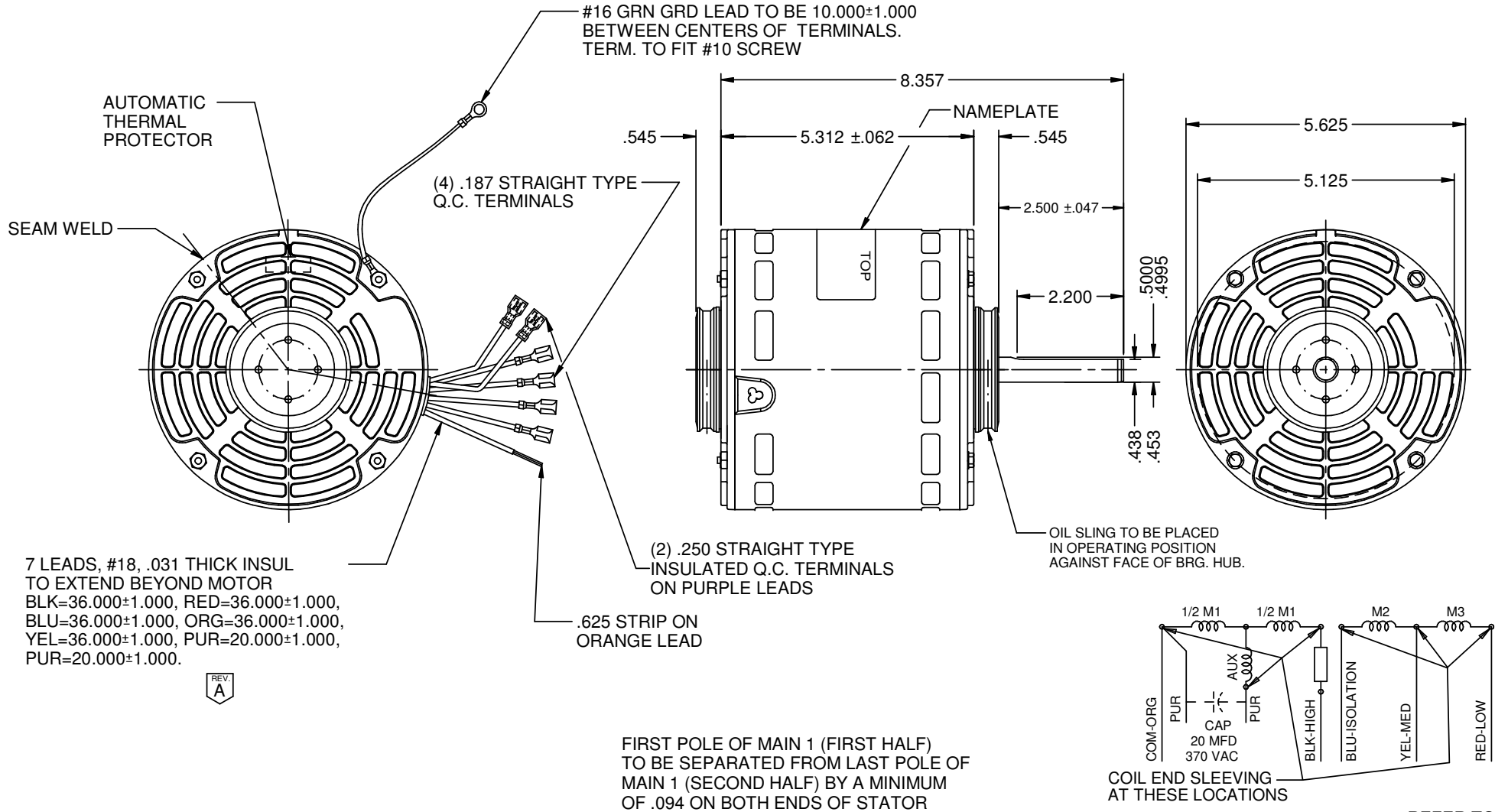


MODEL	REF	CUSTOMER	HP	VOLTS	AMPS	HZ	RPM	ROTATION	CUSTOMER P.N.	DESCRIPTION / REMARKS
K55HXDUS-1258	A33499	WHOLESALE HAC	3/4	460	--	60	1075/3 SPD	CCW LEAD END	LX7930	



NIDEC MOTOR CORPORATION 17-Aug-16

REFER TO S.E.I.M. 24-1

REVISION RECORD FOR: ECO: E26587 UPDATE LENGTH OF PURPLE LEADS FROM '36.000' TO '20.000' IN NOTE		TOLERANCES ON DIMENSIONS (UNLESS OTHERWISE SPECIFIED)		NIDEC MOTOR CORPORATION			
		INCHES .XX = ±.010 .XXX = ±.005		mm		INFORMATION DISCLOSED ON THIS DOCUMENT IS CONSIDERED PROPRIETARY AND SHALL NOT BE REPRODUCED OR DISCLOSED WITHOUT WRITTEN CONSENT OF NIDEC MOTOR CORPORATION	
ISSUED BY: F. GARCIA		ENGINEER APPROVED: H. NAVARRO		ANGLS X°= ±1°		REVISION DATE: 17-AUG-16	
				TITLE		CODE	
				CUSTOMER DETAIL DRAWING		ITEM NO.	
				V02		810441	
				REV		SHEET NUMBER	
				A		1 OF 3	
				DWG SIZE		B	