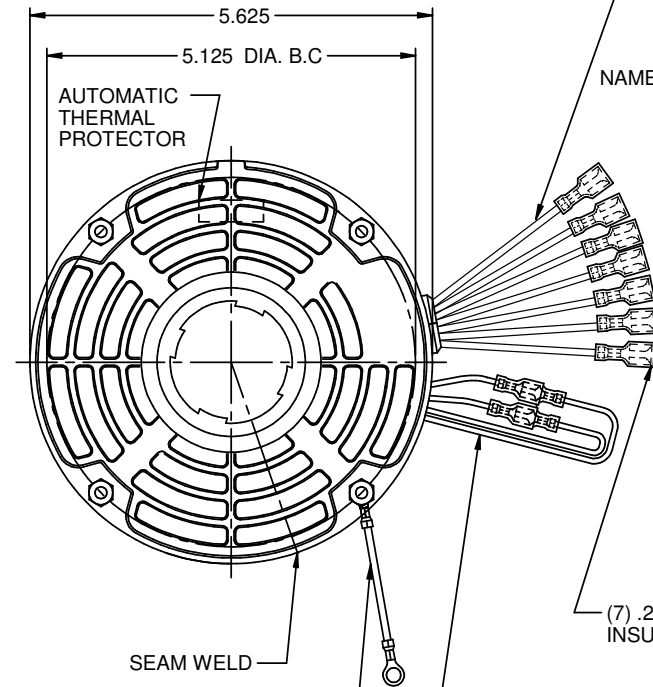


MODEL	REF	CUSTOMER	HP	VOLTS	AMPS	HZ	RPM	ROTATION	CUSTOMER PT. NO.	DESCRIPTION / REMARKS
K55HXPNE-2849		WHOLESALE HAC	1/2 - 1/6	208 - 230	3.6	60	1075/4 SPD	CCW LEAD END REV	3315	K55, HUB, BALL BRG, OPEN

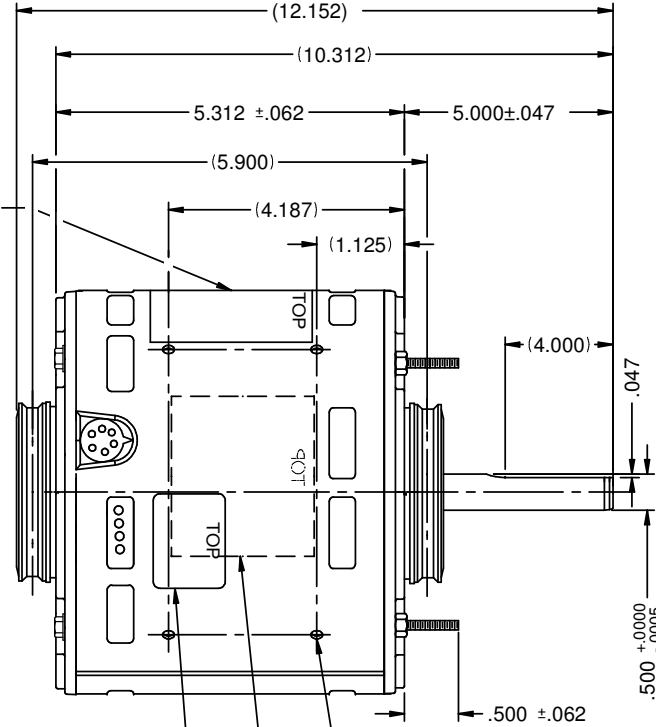
7 LEADS #18, .031 THICK INSUL. TO EXTEND BEYOND MOTOR:  
WHT=36.000+2-0, BLK=36.000+2-0, BLUE=36.000+2-0,  
PUR=36.000+2-0, RED=36.000+2-0, BRN=36.000+2-0,  
BRN/WHT=36.000+2-0.



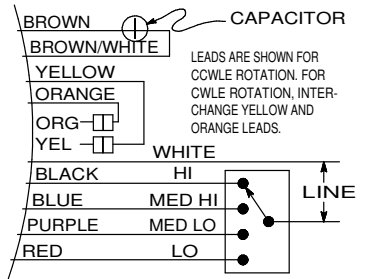
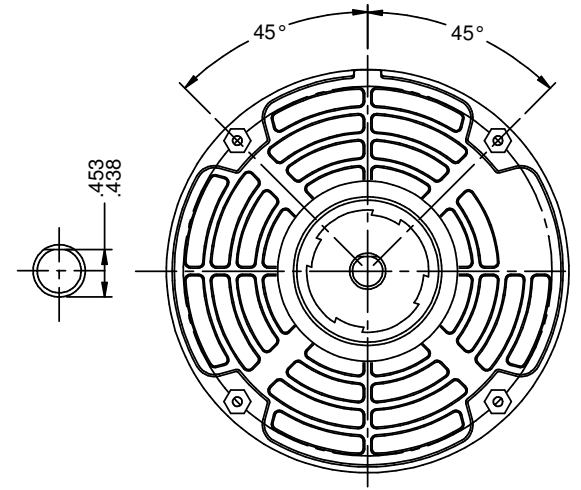
#16 GRN/YEL GROUND LEAD TO BE 12.000 ±.250 BETWEEN CENTERS OF TERMS. TERMINALS TO FIT #10 SCREW

4 LEADS # 18, .031 THICK INSUL. FOR REVERSING ROTATION.  
(2)YEL=4.000+2-0  
(2)ORG=4.000+2-0

(7) .250 STRAIGHT TYPE INSUL Q.C TERMS.



"SHIPPED DETACHED KIT ASSEMBLY"



NIDEC MOTOR CORPORATION 29-Mar-17

REFER TO S.E.I.M. 24-1

REVISION RECORD FOR: ECO E28375	
CHANGED FROM 20 MFD TO 10 MFD IN PAGE 3	
ISSUED BY: A. SAUCEDO	ENGINEER APPROVED: J. SALAZAR

DIMENSIONS ARE FOR REFERENCE ONLY  
UNLESS TOLERANCE IS SPECIFIED

<b>NIDEC MOTOR CORPORATION</b>			
INFORMATION DISCLOSED ON THIS DOCUMENT IS CONSIDERED PROPRIETARY AND SHALL NOT BE REPRODUCED OR DISCLOSED WITHOUT WRITTEN CONSENT OF NIDEC MOTOR CORPORATION			
TITLE		REVISION DATE:	
CUSTOMER DETAIL DRAWING		29-MAR-17	
CODE	ITEM NO.	REV	SHEET NUMBER
V02	814581	A	1 OF 3
			DWG SIZE
			B