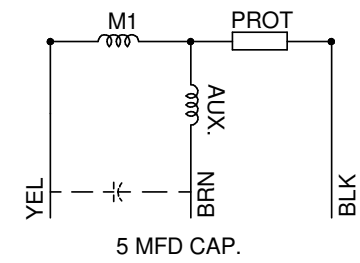
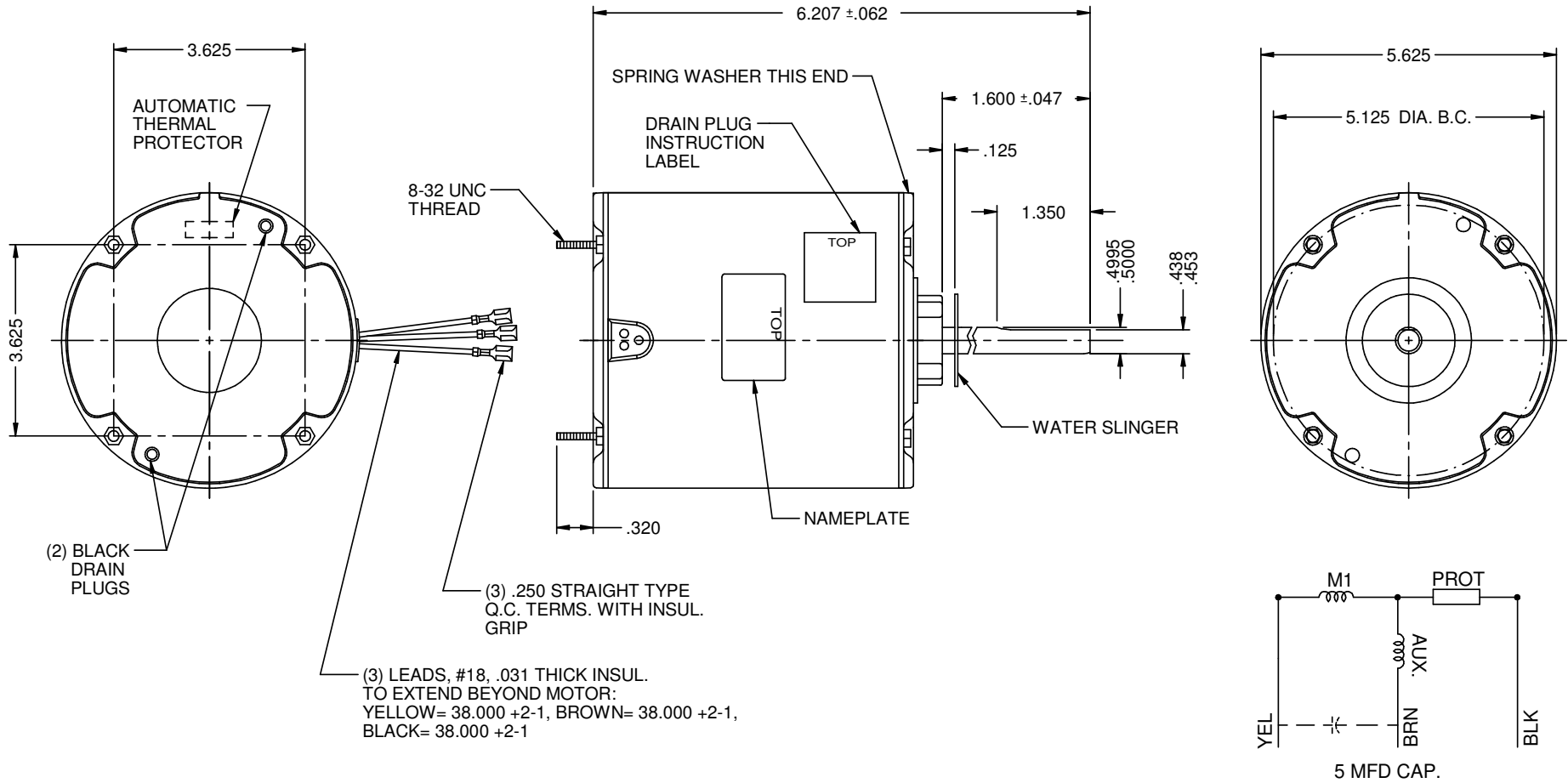


MODEL	REF.	CUSTOMER	HP	VOLTS	AMPS	HZ	RPM	ROTATION	CATALOG NO.	DESCRIPTION / REMARKS
K55HXPUF-1679	C37126-2	WHOLESALE HAC	1/6	208-230	.85	60	1500	CW LEAD END	3405	



NIDEC MOTOR CORPORATION 18-May-17

REFER TO S.E.I.M. 24-1

CREATED DRAWING.	REVISION RECORD FOR: ECO E28698
ISSUED BY: G. MEDINA	ENGINEER APPROVED: H. NAVARRO

DIMENSIONS ARE FOR REFERENCE ONLY
UNLESS TOLERANCE IS SPECIFIED

NIDEC MOTOR CORPORATION			
INFORMATION DISCLOSED ON THIS DOCUMENT IS CONSIDERED PROPRIETARY AND SHALL NOT BE REPRODUCED OR DISCLOSED WITHOUT WRITTEN CONSENT OF NIDEC MOTOR CORPORATION			
TITLE		REVISION DATE:	
CUSTOMER DETAIL DRAWING		17-MAY-17	
CODE	ITEM NO.	REV	SHEET NUMBER
V02	815651	-	1 OF 3
			DWG SIZE
			B