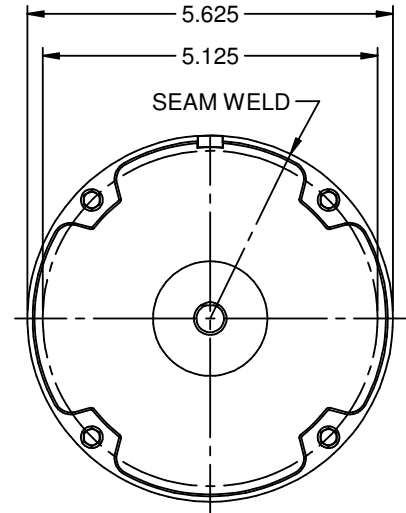
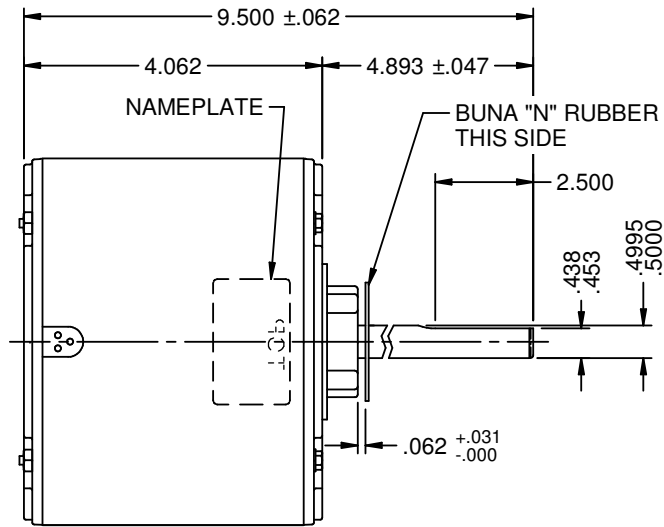
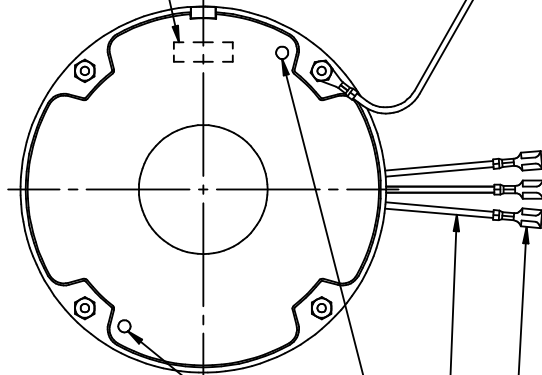


MODEL	REF	CUSTOMER	HP	VOLTS	AMPS	HZ	RPM	ROTATION	CUSTOMER PN	DESCRIPTION / REMARKS
K55HXDUZ-1264	A33541	WHOLESALE HAC	1/6	208-230		60	825	C.C.W. LEAD END	LX7927	

#16 GREEN/YELLOW GROUND LEAD TO BE 6.000±.250 BETWEEN CENTERS OF TERMINALS

TERMINAL TO FIT 5/16" STUD AMP #42752-2 OR EQUIV.

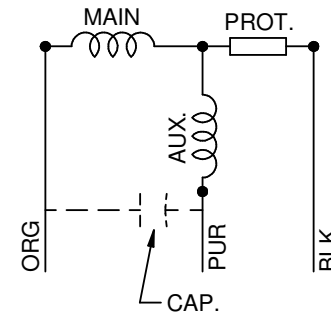
AUTOMATIC THERMAL PROTECTOR



(2) HOLES LOCATED AS SHOWN TO BE PUNCHED FOR DRAIN PURPOSES

(3) .250 STRAIGHT TYPE Q.C. TERMS WITH INSUL. GRIP

3 LEADS #18, .031 THICK INSUL. TO EXTEND BEYOND MOTOR:
 ORG= 38.000+3-0, BLK= 38.000+3-0
 PUR= 38.000+3-0



NIDEC MOTOR CORPORATION 23-May-17

REFER TO S.E.I.M. 24-1

REVISION RECORD FOR: E28697	
NEW DRAWING.	
ISSUED BY: B. ANDRADE	ENGINEER APPROVED: H. NAVARRO

DIMENSIONS ARE FOR REFERENCE ONLY
 UNLESS TOLERANCE IS SPECIFIED

NIDEC MOTOR CORPORATION				
INFORMATION DISCLOSED ON THIS DOCUMENT IS CONSIDERED PROPRIETARY AND SHALL NOT BE REPRODUCED OR DISCLOSED WITHOUT WRITTEN CONSENT OF NIDEC MOTOR CORPORATION				
TITLE: CUSTOMER DETAIL DRAWING			REVISION DATE: 18-MAY-17	
CODE: V02	ITEM NO.: 815674	REV: -	SHEET NUMBER: 1 OF 3	DWG SIZE: B