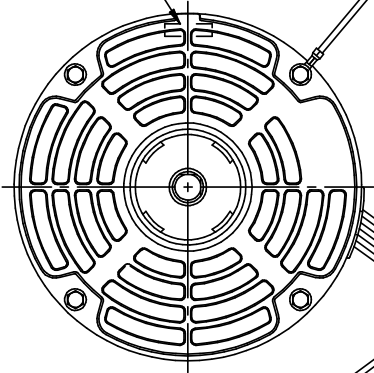


| MODEL | REF | CUSTOMER | HP | VOLTS | AMPS | HZ | RPM | ROTATION | CATALOG NO. | DESCRIPTION / REMARKS |
|----------------|-----|----------|-----|-------|------|----|------------|--------------|-------------|-----------------------|
| KA55HX0WP-9031 | | STANDARD | 1/2 | 230 | 4.5 | 60 | 1075/3 SPD | CCW LEAD END | 1824 | |

SHIPPED DETACHED:
 1- DUMMY END SHIELD
 8- 8-32 NUTS
 2- HUB RINGS
 1- CAPACITOR
 1- CAPACITOR CLAMP
 1- CAPACITOR CAP
 2- 10-32 SCREWS

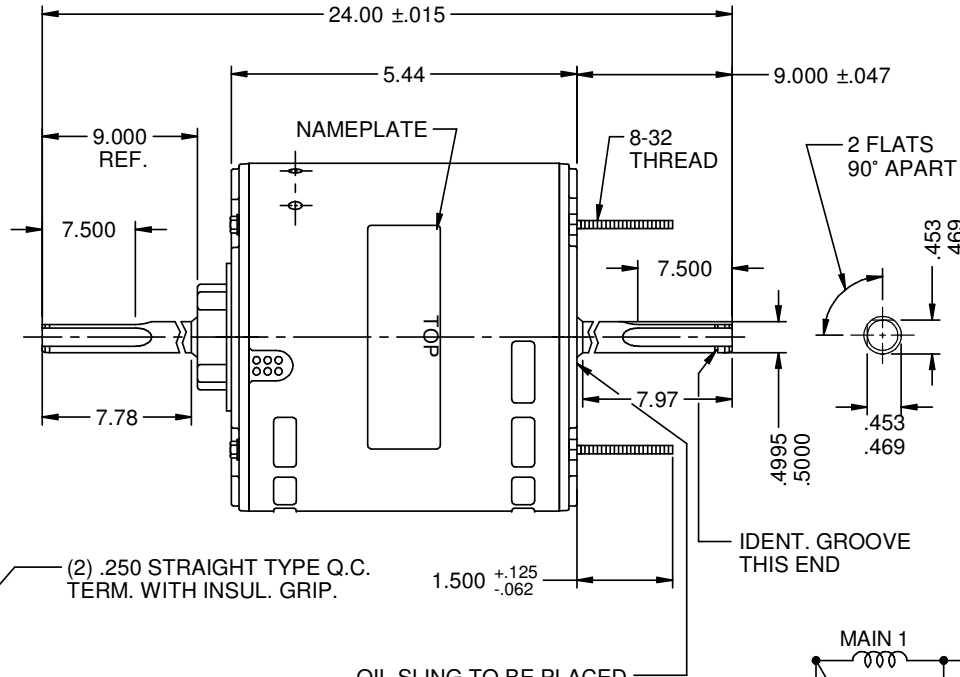
#16 GREEN GROUND LEAD TO BE 6.000±.250 BETWEEN CENTERS OF TERMS. TERM. TO FIT #10 SCREW

AUTOMATIC THERMAL PROTECTOR

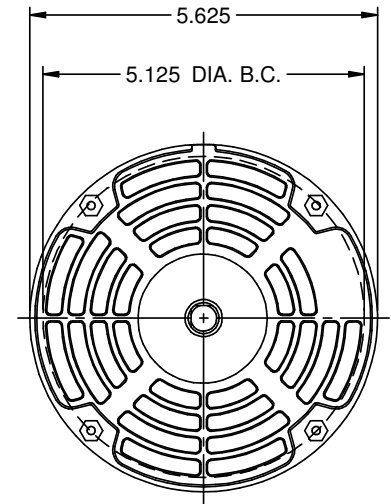


.750±.062 SKINNED

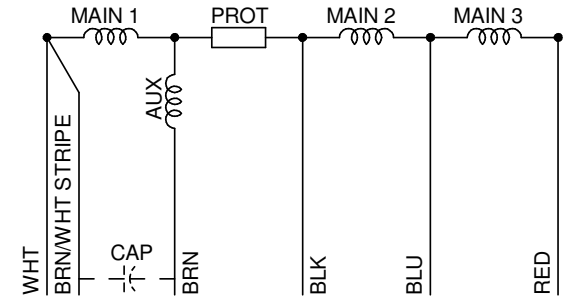
6 LEADS, #18, .031 THICK INSUL. TO EXTEND BEYOND MOTOR:
 WHITE(C)= 20.000 +2-0, BLUE(2)= 20.000 +2-0,
 BLACK(1)= 20.000 +2-0, RED(3)= 20.000 +2-0,
 BRN= 20.000 +2-0, BRN/WHT STRIPE= 20.000 +2-0,
 FIGURES TO BE INDICATED ON LEADS.
 LEADS TO BE PROTECTED WITH A GROMMET



OIL SLING TO BE PLACED IN OPERATING POSITION AGAINST FACE OF BRG. HUB (BOTH ENDS)



INCLUDES 5.0 MFD 370V CAPACITOR



NIDEC MOTOR CORPORATION 26-May-17

REFER TO S.E.I.M. 24-1

| REVISION RECORD FOR: E28700 | | DIMENSIONS ARE FOR REFERENCE ONLY | | NIDEC MOTOR CORPORATION | | | |
|-----------------------------|--|-----------------------------------|--|--|--|--------------------------|----------------------|
| CREATED DRAWING. | | UNLESS TOLERANCE IS SPECIFIED | | INFORMATION DISCLOSED ON THIS DOCUMENT IS CONSIDERED PROPRIETARY AND SHALL NOT BE REPRODUCED OR DISCLOSED WITHOUT WRITTEN CONSENT OF NIDEC MOTOR CORPORATION | | | |
| ISSUED BY: G. MEDINA | | ENGINEER APPROVED: H. NAVARRO | | TITLE: CUSTOMER DETAIL DRAWING | | CODE: V02 | ITEM NO.: 815755 |
| | | | | | | REV: - | SHEET NUMBER: 1 OF 3 |
| | | | | | | REVISION DATE: 23-MAY-17 | |
| | | | | | | DWG SIZE: B | |