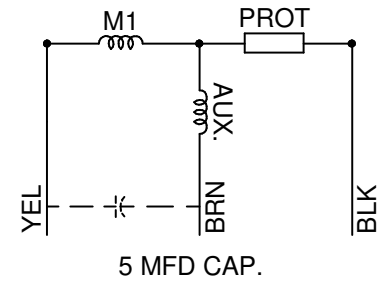
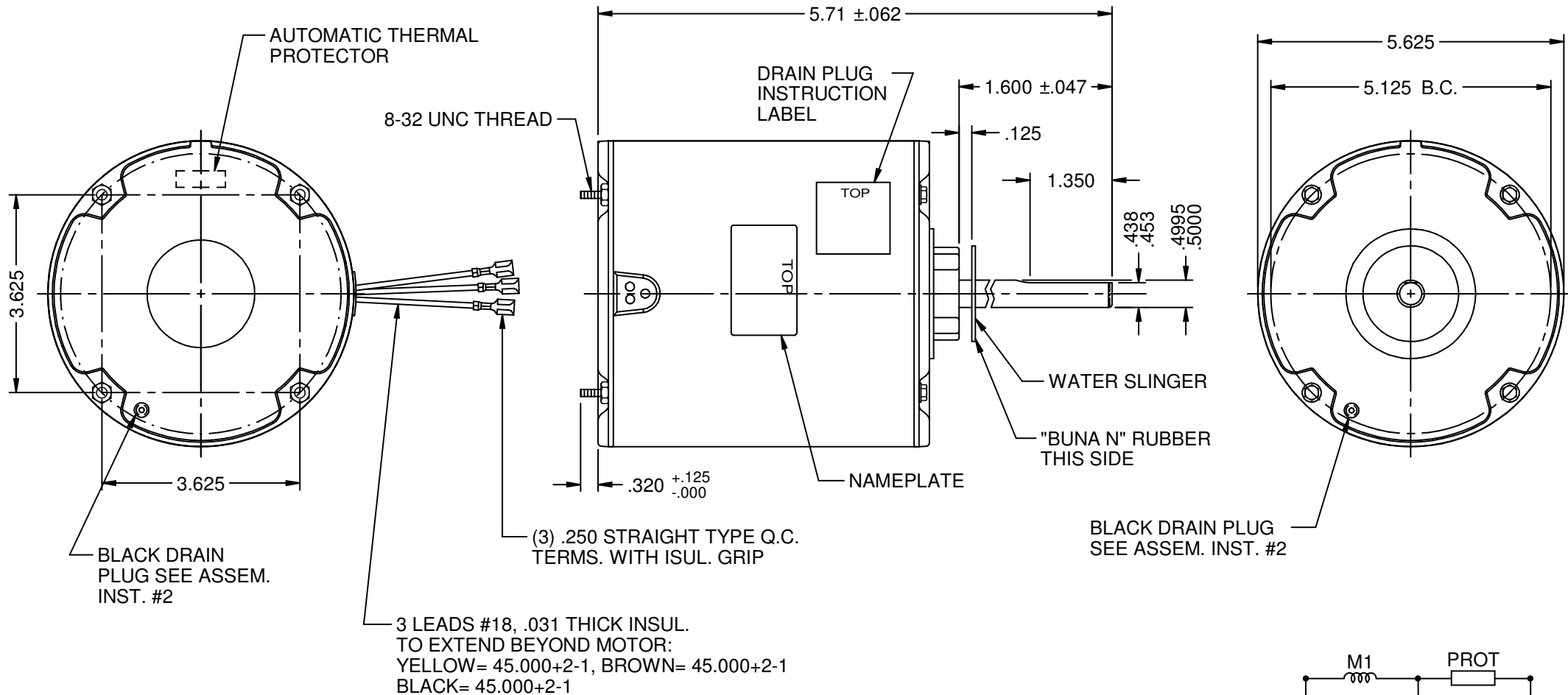


MODEL	REF	CUSTOMER	HP	VOLTS	AMPS	HZ	RPM	ROTATION	CAT. NO.	DESCRIPTION / REMARKS
K55HXSWG-7925		STANDARD	1/10	208-230	0.80-0.80	60	1100	CW LEAD END	3402	

REV. A



TOTALLY ENCLOSED

NIDEC MOTOR CORPORATION 10-Oct-17

REFER TO S.E.I.M. 24-1

REVISION RECORD FOR: ECO E29862	
CHANGED THE ROTATION FROM CCW TO CW LEAD END IN THE CHART, PAGES 1 & 2.	
ISSUED BY: G. MEDINA	ENGINEER APPROVED: H. NAVARRO

DIMENSIONS ARE FOR REFERENCE ONLY
UNLESS TOLERANCE IS SPECIFIED

NIDEC MOTOR CORPORATION				
INFORMATION DISCLOSED ON THIS DOCUMENT IS CONSIDERED PROPRIETARY AND SHALL NOT BE REPRODUCED OR DISCLOSED WITHOUT WRITTEN CONSENT OF NIDEC MOTOR CORPORATION				
TITLE		CODE	ITEM NO.	REVISION DATE
CUSTOMER DETAIL DRAWING		V02	815756	10-OCT-17
SHEET NUMBER		REV	DWG SIZE	
1 OF 3		A	B	