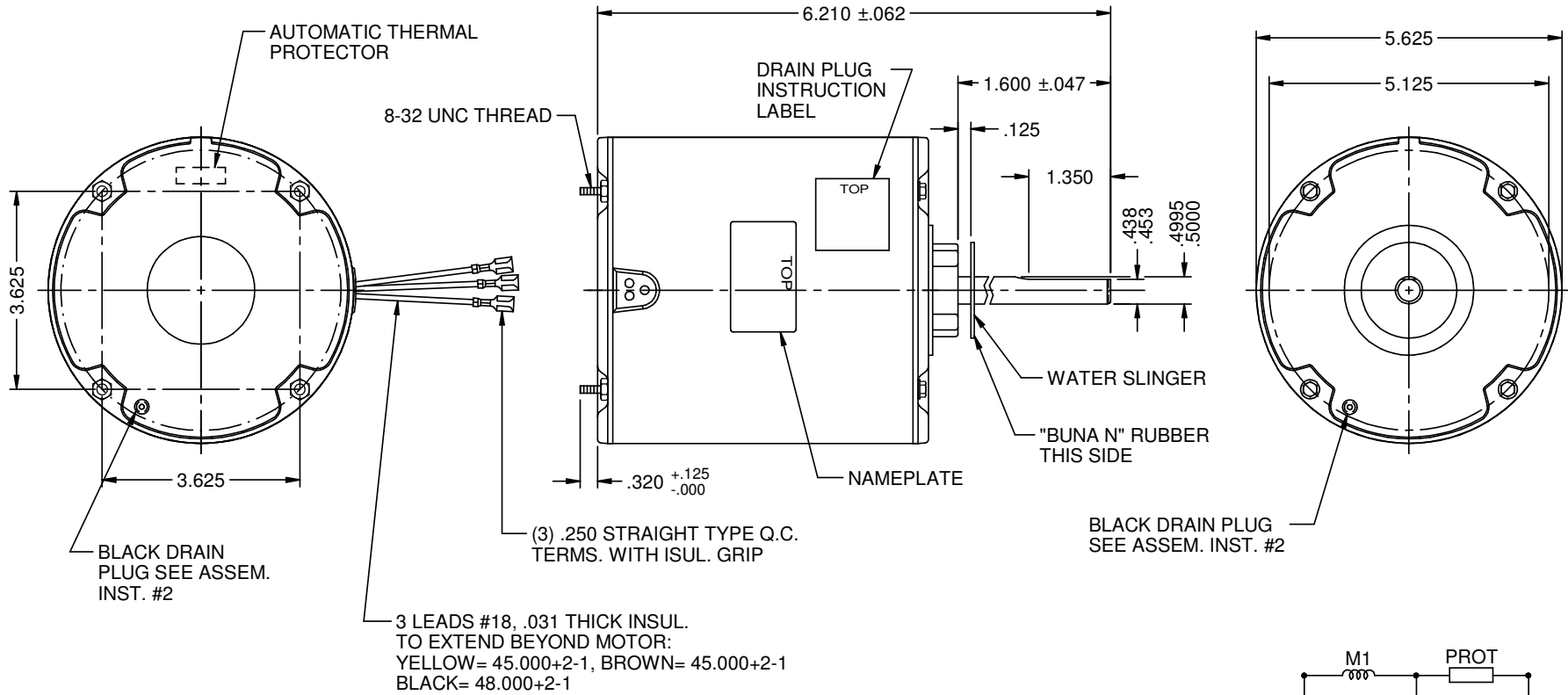
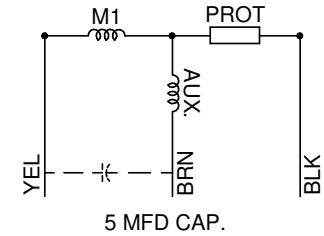


MODEL	REF	CUSTOMER	HP	VOLTS	AMPS	HZ	RPM	ROTATION	CAT. NO.	DESCRIPTION / REMARKS
K55HXSWK-7927		STANDARD	1/4	208-230	1.8	60	1100	CCW SHAFT END	3404	

REV. A



TOTALLY ENCLOSED



NIDEC MOTOR CORPORATION 18-Nov-17

REFER TO S.E.I.M. 24-1

REVISION RECORD FOR:	E30109
ISSUED BY:	B. ANDRADE
ENGINEER APPROVED:	A. LOZANO

DIMENSIONS ARE FOR REFERENCE ONLY
UNLESS TOLERANCE IS SPECIFIED

NIDEC MOTOR CORPORATION			
INFORMATION DISCLOSED ON THIS DOCUMENT IS CONSIDERED PROPRIETARY AND SHALL NOT BE REPRODUCED OR DISCLOSED WITHOUT WRITTEN CONSENT OF NIDEC MOTOR CORPORATION			
TITLE		REVISION DATE:	
CUSTOMER DETAIL DRAWING		18-NOV-17	
CODE	ITEM NO.	REV	SHEET NUMBER
V02	815758	A	1 OF 3
			DWG SIZE
			B