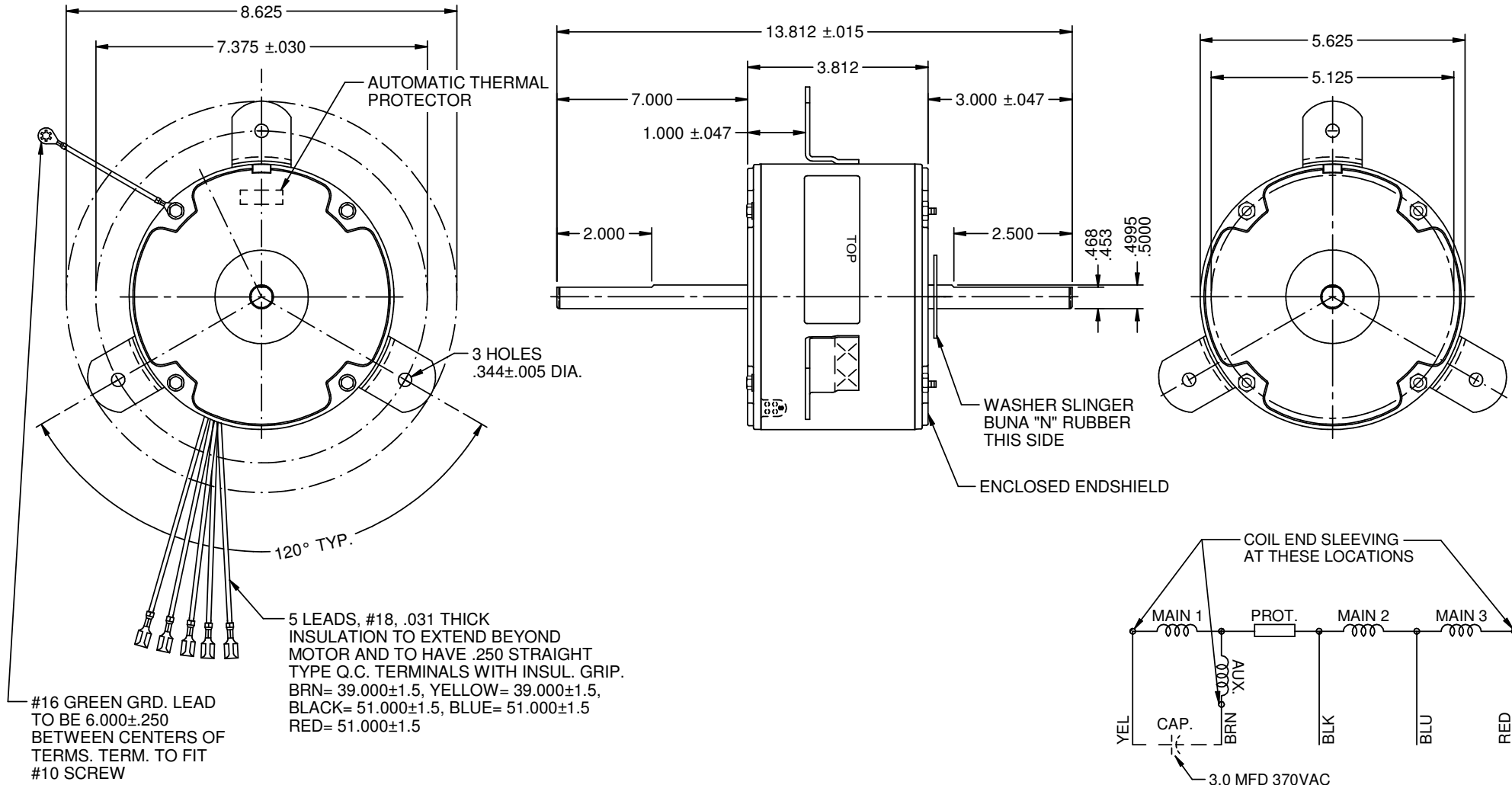


MODEL	REF	CUSTOMER	HP	VOLTS	AMPS	HZ	RPM	ROTATION	CAT. NO.	DESCRIPTION / REMARKS
K55HXSWZ-7989		STANDARD	1/5	277-265	1.3	60	1040/3 SPD	CW LEAD END	3360	



NIDEC MOTOR CORPORATION 24-May-17

REFER TO S.E.I.M. 24-1

NEW DRAWING.	REVISION RECORD FOR: E28699
ISSUED BY: B. ANDRADE	ENGINEER APPROVED: H. NAVARRO

DIMENSIONS ARE FOR REFERENCE ONLY

UNLESS TOLERANCE IS SPECIFIED

NIDEC MOTOR CORPORATION

INFORMATION DISCLOSED ON THIS DOCUMENT IS CONSIDERED PROPRIETARY AND SHALL NOT BE REPRODUCED OR DISCLOSED WITHOUT WRITTEN CONSENT OF NIDEC MOTOR CORPORATION

REVISION DATE: 24-MAY-17

TITLE: CUSTOMER DETAIL DRAWING	CODE: V02	ITEM NO.: 815759	REV: -	SHEET NUMBER: 1 OF 3	DWG SIZE: B
--------------------------------	-----------	------------------	--------	----------------------	-------------