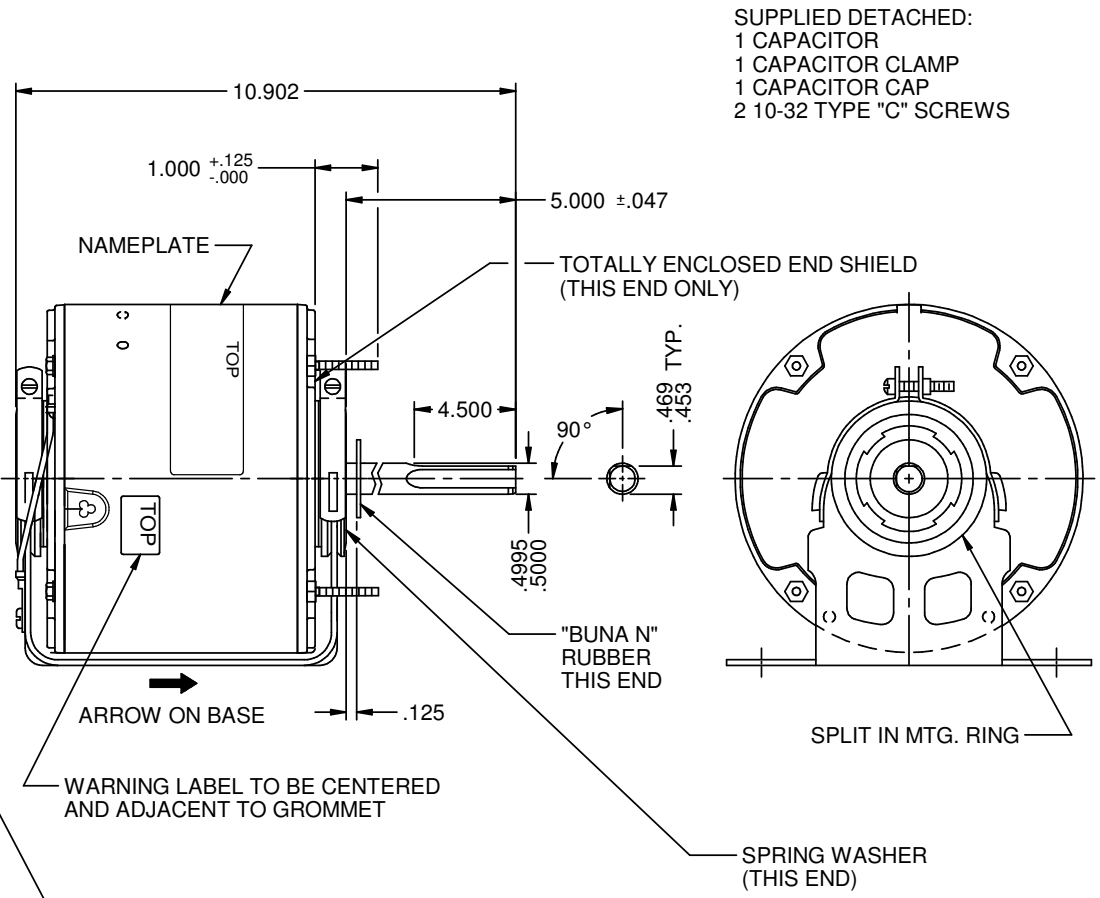
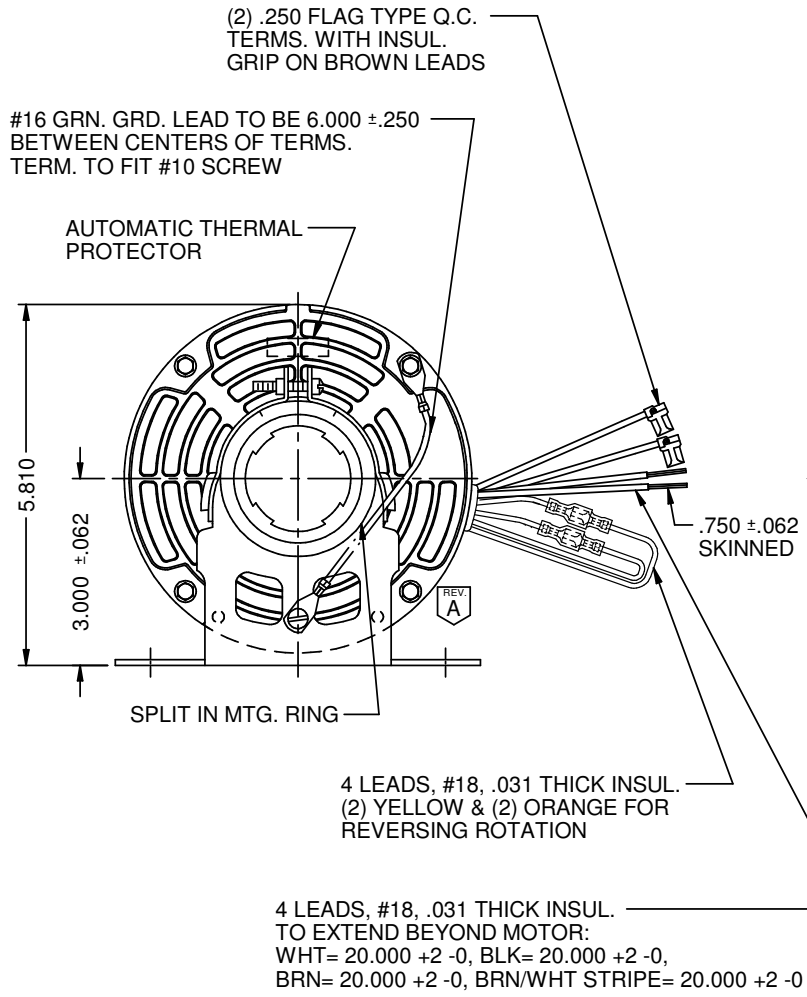


MODEL	REF	CUSTOMER	HP	VOLTS	AMPS	HZ	RPM	ROTATION	CATALOG NO.	DESCRIPTION / REMARKS
K55HXSBJ-1140		STANDARD	1/3	230	2.2	60	1075	CCW LEAD END REV	4960	



SUPPLIED DETACHED:
 1 CAPACITOR
 1 CAPACITOR CLAMP
 1 CAPACITOR CAP
 2 10-32 TYPE "C" SCREWS

ROTATION: C.CW. VIEWING LEAD END
 WITH ORG TO ORG AND YEL TO YEL LEADS
 TO REVERSE ROTATION REVERSE LEADS

NIDEC MOTOR CORPORATION 17-Nov-17

REFER TO S.E.I.M. 24-1

REVISION RECORD FOR:	
ECO E29762	
CHANGE DRAWING TO SHOW THAT THE GROUND WIRE IS ROUTED FROM INSIDE THE BASE	
ISSUED BY:	ENGINEER APPROVED:
J. ALVARADO	R. CRUZ

DIMENSIONS ARE FOR REFERENCE ONLY

UNLESS TOLERANCE IS SPECIFIED

NIDEC MOTOR CORPORATION				
INFORMATION DISCLOSED ON THIS DOCUMENT IS CONSIDERED PROPRIETARY AND SHALL NOT BE REPRODUCED OR DISCLOSED WITHOUT WRITTEN CONSENT OF NIDEC MOTOR CORPORATION				REVISION DATE:
				16-NOV-17
TITLE	CODE	ITEM NO.	REV	SHEET NUMBER
CUSTOMER DETAIL DRAWING	V02	815964	A	1 OF 3
				DWG SIZE
				B