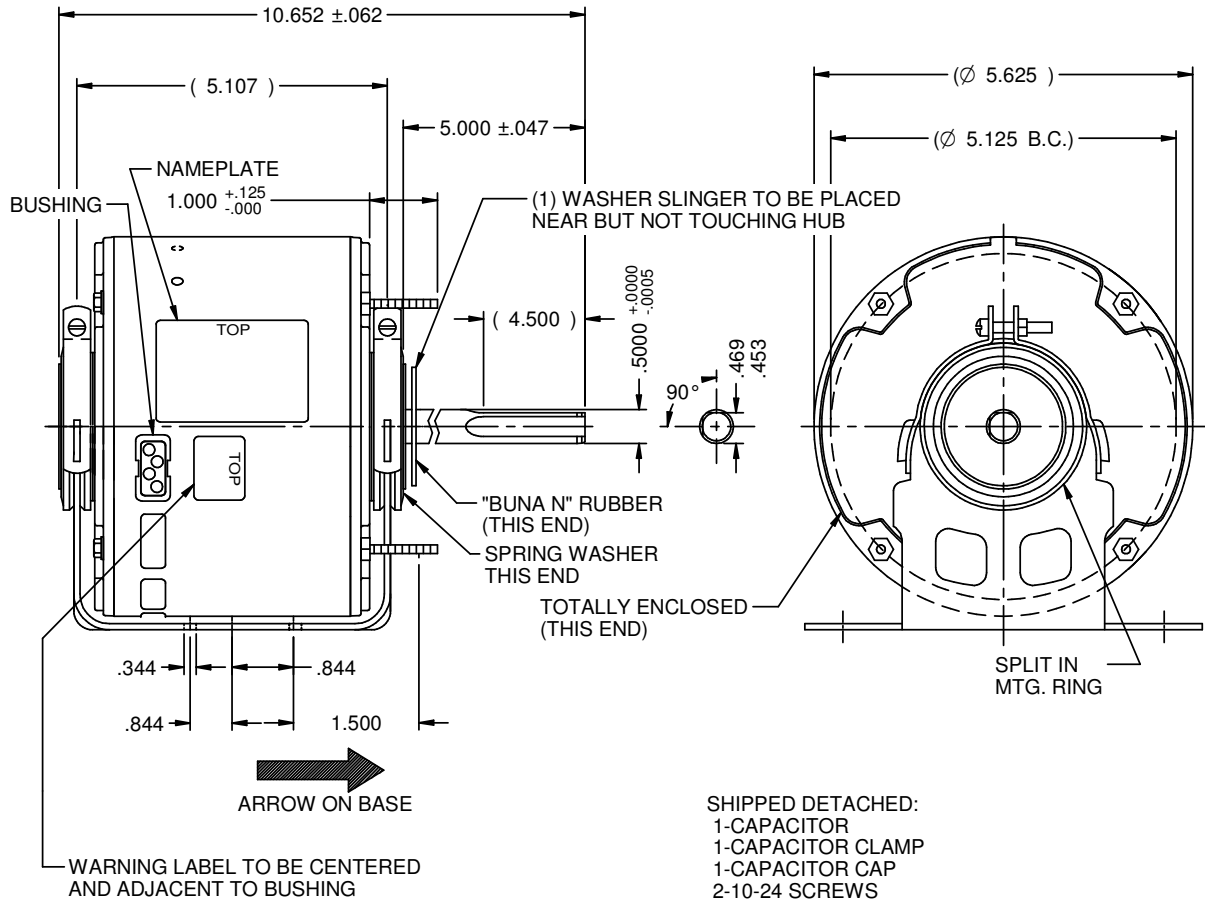
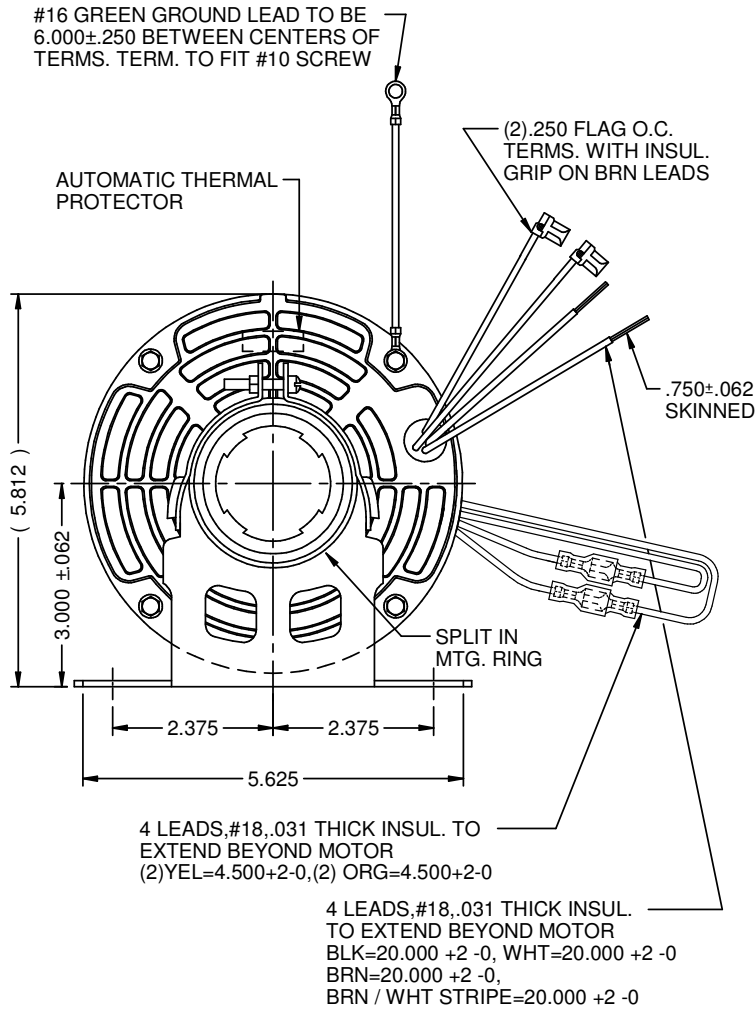


MODEL	REF	CUSTOMER	HP	VOLTS	AMPS	HZ	RPM	ROTATION	CUSTOMER PT. NO.	DESCRIPTION / REMARKS
K55HXSBK-7724		STANDARD	1/3	230	1.8	60	1625	CCW LEAD END REV	4961	K55 RES. MTD, BALL BRG, OPEN



NIDEC MOTOR CORPORATION 13-Nov-18

REFER TO S.E.I.M. 24-1

NEW DRAWING.	REVISION RECORD FOR:	ECO: E32643
ISSUED BY:	ENGINEER APPROVED:	
G. ISASSI	Z. TREVIÑO	

DIMENSIONS ARE FOR REFERENCE ONLY

UNLESS TOLERANCE IS SPECIFIED

NIDEC MOTOR CORPORATION			
INFORMATION DISCLOSED ON THIS DOCUMENT IS CONSIDERED PROPRIETARY AND SHALL NOT BE REPRODUCED OR DISCLOSED WITHOUT WRITTEN CONSENT OF NIDEC MOTOR CORPORATION			
TITLE		CODE	REVISION DATE:
CUSTOMER DETAIL DRAWING		V02	13-NOV-18
ITEM NO.	REV	SHEET NUMBER	DWG SIZE
823536	-	1 OF 3	B