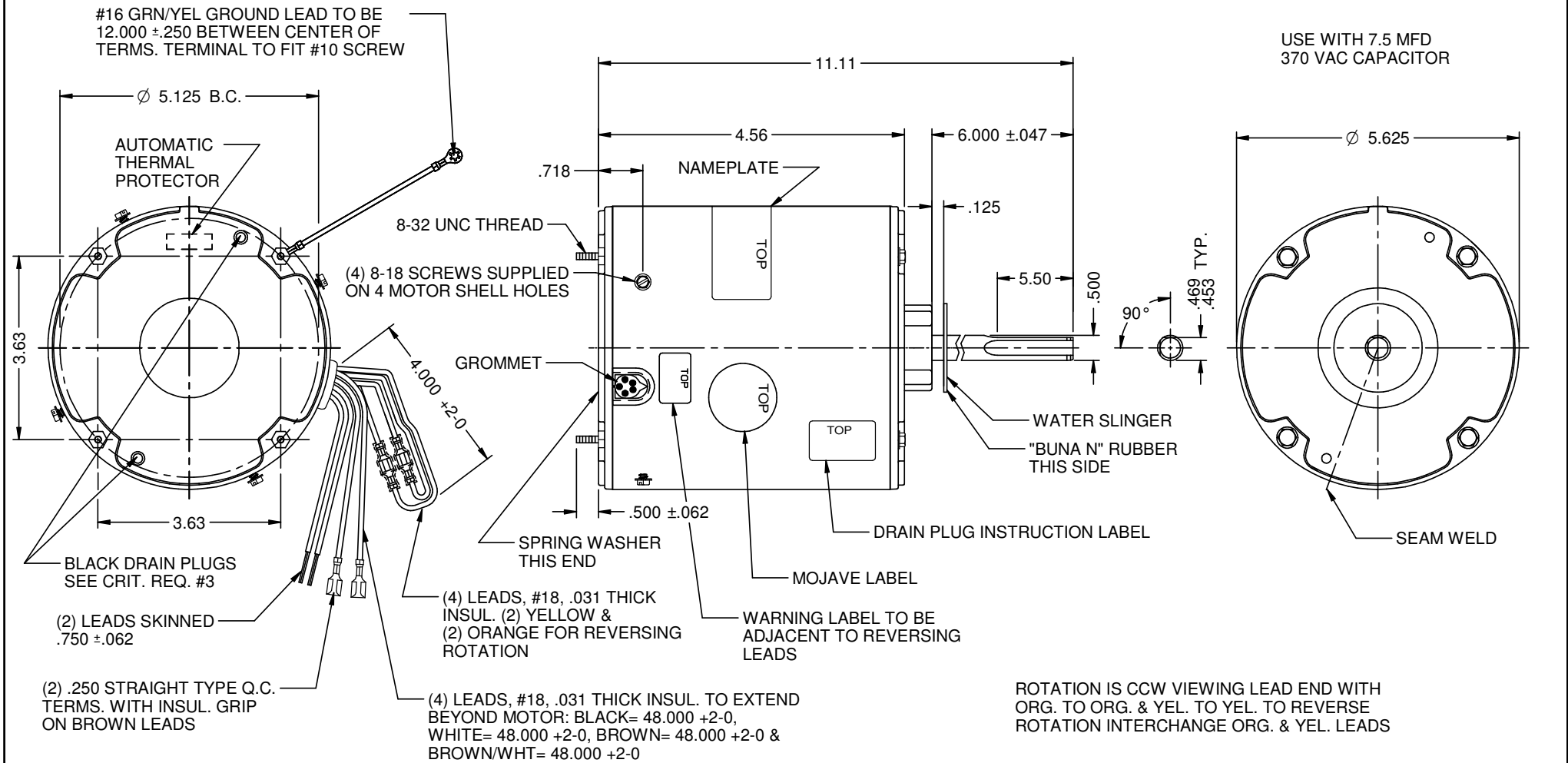


MODEL	REF	CUSTOMER	HP	VOLTS	AMPS	HZ	RPM	ROTATION	CAT. #	DESCRIPTION / REMARKS
K55HXWEH-625		STANDARD	1/3	208-230	2.1	60	1075	CCW LEAD END REV	1861H	K55, TOTALLY ENCLOSED, STUD MOUNTING, BALL BEARING



NIDEC MOTOR CORPORATION 04-Dec-18

REFER TO S.E.I.M. 24-1

REVISION RECORD FOR: ECO E32044	
DRAWING WAS CREATED	
ISSUED BY: G. TREVIÑO	ENGINEER APPROVED: J. RICE

DIMENSIONS ARE FOR REFERENCE ONLY

UNLESS TOLERANCE IS SPECIFIED

NIDEC MOTOR CORPORATION

INFORMATION DISCLOSED ON THIS DOCUMENT IS CONSIDERED PROPRIETARY AND SHALL NOT BE REPRODUCED OR DISCLOSED WITHOUT WRITTEN CONSENT OF NIDEC MOTOR CORPORATION

REVISION DATE: 04-DEC-18

TITLE: CUSTOMER DETAIL DRAWING		CODE: V02	ITEM NO.: 823567	REV: --	SHEET NUMBER: 1 OF 3	DWG SIZE: B
--------------------------------	--	-----------	------------------	---------	----------------------	-------------