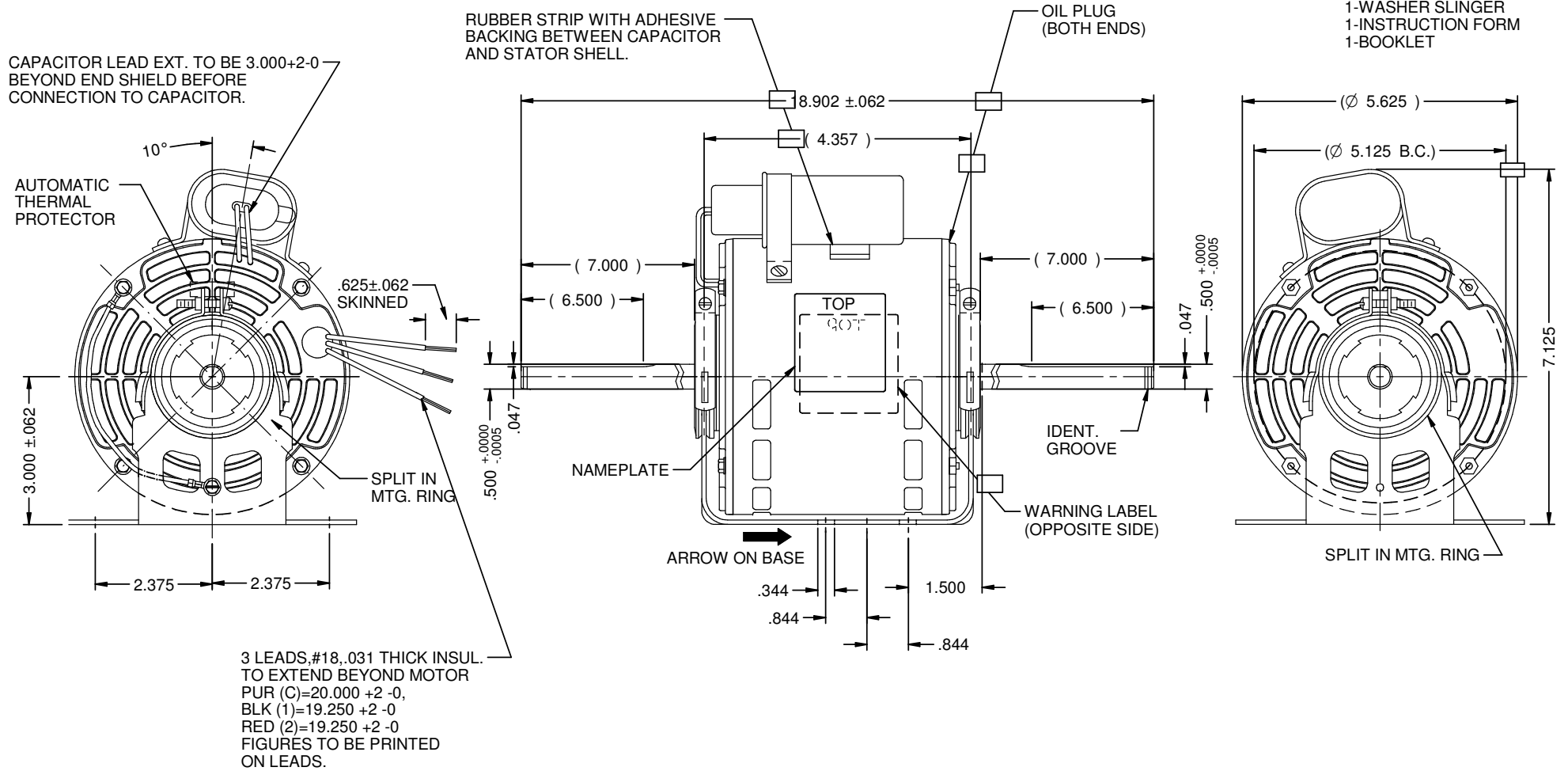


| MODEL | REF | CUSTOMER | HP | VOLTS | AMPS | HZ | RPM | ROTATION | CUSTOMER PT. NO. | DESCRIPTION / REMARKS |
|----------------|-----|----------|-----|-------|------|----|------------|--------------|------------------|--|
| KD55HXCHR-4981 | | STANDARD | 1/4 | 115 | 3.6 | 60 | 1625/2 SPD | CCW LEAD END | 1242 | KD55 RES. MTD. SELF-ALIGN SLEEVE BRG. OPEN |



SUPPLIED DETACHED:
 1-WASHER SLINGER
 1-INSTRUCTION FORM
 1-BOOKLET

NIDEC MOTOR CORPORATION 08-Jan-19

REFER TO S.E.I.M. 24-1

| | | |
|--------------|----------------------|-------------|
| NEW DRAWING. | REVISION RECORD FOR: | ECO: E32641 |
| ISSUED BY: | ENGINEER APPROVED: | |
| G. ISASSI | Z. TREVIÑO | |

DIMENSIONS ARE FOR REFERENCE ONLY
 UNLESS TOLERANCE IS SPECIFIED

| NIDEC MOTOR CORPORATION | | | | | |
|--|--|------|----------|-----|----------------|
| INFORMATION DISCLOSED ON THIS DOCUMENT IS CONSIDERED PROPRIETARY AND SHALL NOT BE REPRODUCED OR DISCLOSED WITHOUT WRITTEN CONSENT OF NIDEC MOTOR CORPORATION | | | | | REVISION DATE: |
| TITLE | | | | | 14-DEC-18 |
| CUSTOMER DETAIL DRAWING | | CODE | ITEM NO. | REV | SHEET NUMBER |
| | | V02 | 824107 | - | 1 OF 3 |
| | | | | | DWG SIZE |
| | | | | | B |