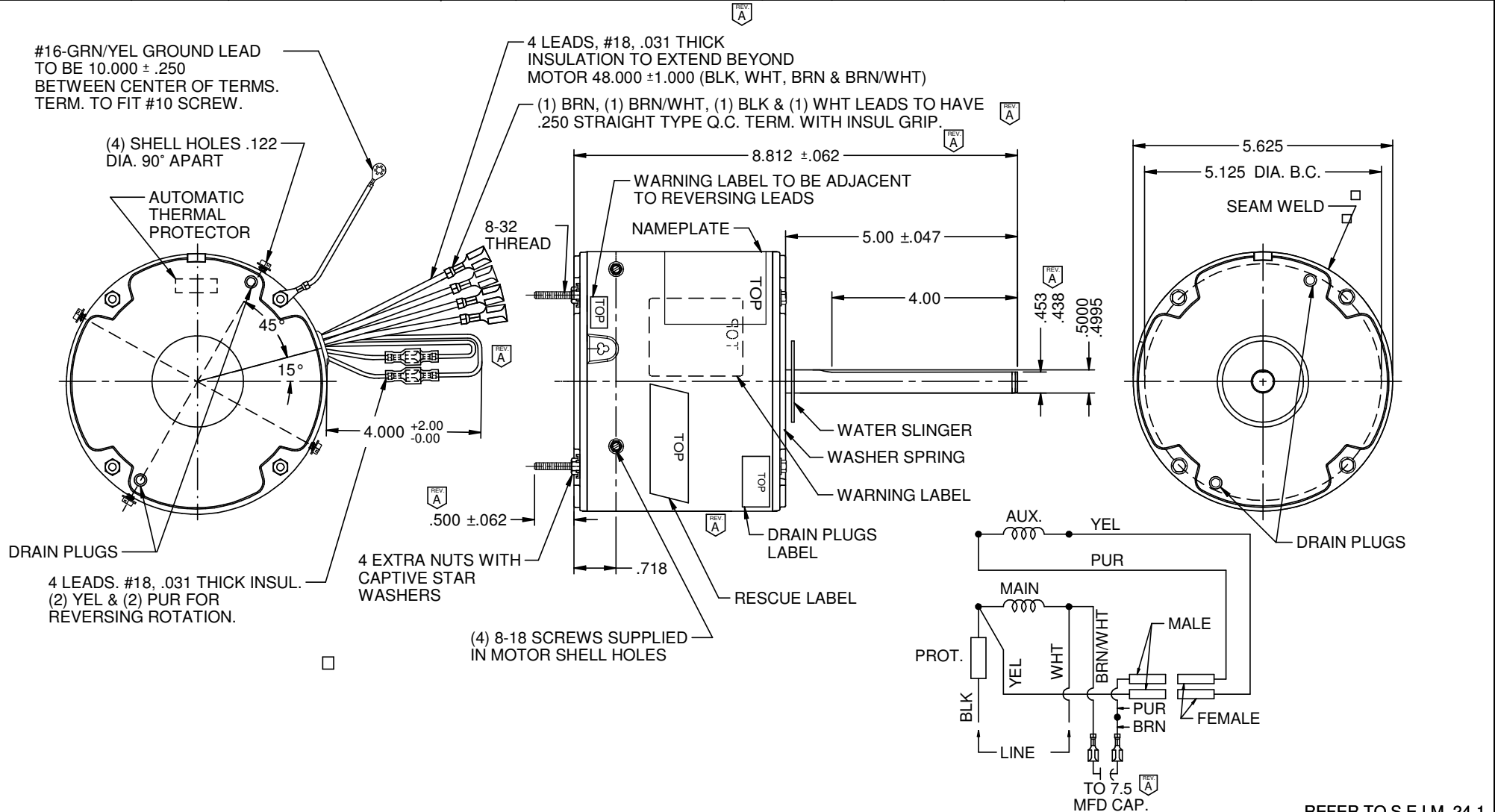


MODEL	REF	CUSTOMER	HP	VOLTS	AMPS	HZ	RPM	ROTATION	CUSTOMER P.N.	CAT. NO	DESCRIPTION / REMARKS
K55HXRTG-3039		WHOLESALE HAC	1/3-1/6	208-230	2.4	60	1075	CCW LEAD END REV.		5472	ENCLOSED, CONDENSER FAN MOTOR.



NIDEC MOTOR CORPORATION 25-Jun-19

REFER TO S.E.I.M. 24-1

REVISION RECORD FOR: ECO: E34449	
WAS CHANGED EXIT OF REVERSING LEADS AT 2:30; AMPS TO 2.4; THE SCREW EXTENSION TO .500;	
THE LENGTH OF SHAFT TO 5.00" THE LENGTH OF FLAT TO 4.00" AND CHANGES OF DOUBLE FLAT TO SINGLE FLAT, LENGTH THE MOTOR TO 8.812. THE CHANGED CAPACITOR TO 7.5 MFD.	
IT WAS CHANGED IN WHITE AND BLACK LEADS, THE TYPE OF TERMINAL TO STRAIGHT TERMINAL.	
ISSUED BY: G. ISASSI	ENGINEER APPROVED: J. RICE

DIMENSIONS ARE FOR REFERENCE ONLY

UNLESS TOLERANCE IS SPECIFIED

NIDEC MOTOR CORPORATION			
INFORMATION DISCLOSED ON THIS DOCUMENT IS CONSIDERED PROPRIETARY AND SHALL NOT BE REPRODUCED OR DISCLOSED WITHOUT WRITTEN CONSENT OF NIDEC MOTOR CORPORATION			REVISION DATE: 27-MAY-19
TITLE: CUSTOMER DETAIL DRAWING	CODE: V02	ITEM NO.: 824407	REV: A
		SHEET NUMBER: 1 OF 3	DWG SIZE: B