

MODEL	REF	CUSTOMER	HP	VOLTS	AMPS	HZ	RPM	ROTATION	CUSTOMER PN.	DESCRIPTION / REMARKS
K55HXWRH-0122	A30801	WHOLESALE-HAC	1/3	208-230	1.7	60/50	1130	C.CW LEAD END REV.	1861PEP	K55 ENCLOSED, STUD MTD., BALL BRG.

#16 GREEN GROUND LEAD TO BE
12.00 BETWEEN CENTERS OF
TERMS. TERM. TO FIT #10 SCREW

4 LEADS #18, .031 THICK INSUL. TO
EXTEND BEYOND MOTOR:
BLACK=48.000+2-0,
WHITE=48.000+2-0,
BROWN=48.000+2-0,
BRN/WHT STRIPE=48.000+2-0

(2) .250 FLAG TYPE Q.C. TERMS.
WITH INSUL. GRIP ON BROWN
LEADS

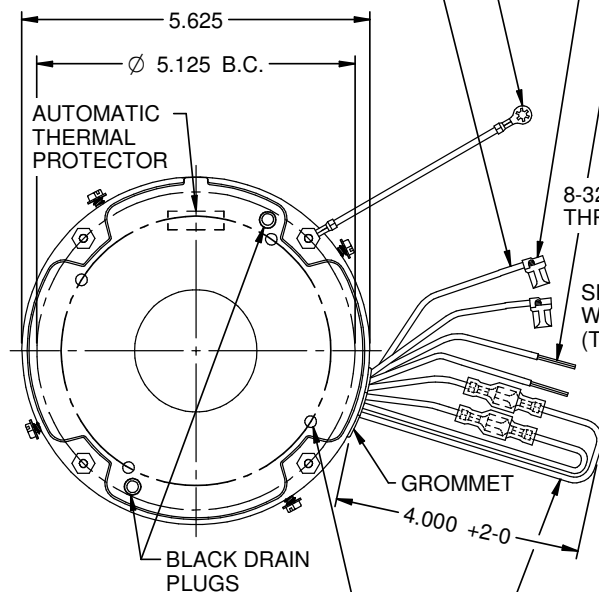
LEADS SKINNED
.750±.062

(4) 8-18 SCREWS SUPPLIED
IN (4) MOTOR SHELL HOLES

TOTALLY ENCLOSED

USE WITH 7.5 MFD
370-VAC CAPACITOR

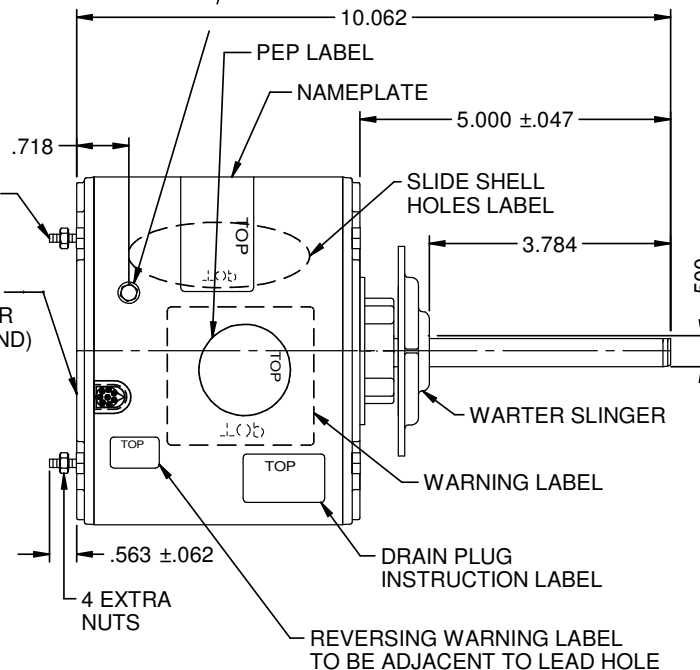
NOTE: 4 SCREWS INCLUDED
IN CARTON



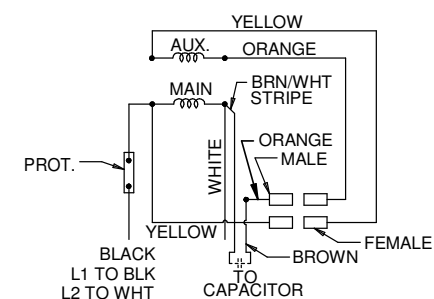
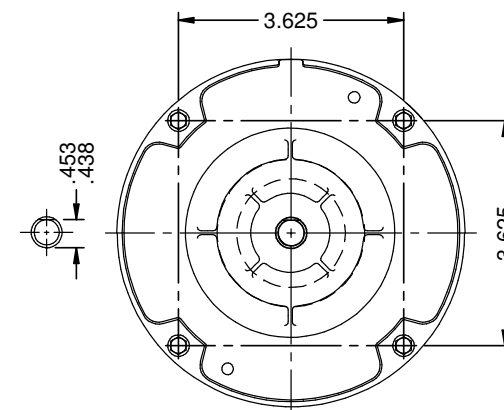
(4) LEADS #18, .031 THICK INSUL.
(2) YELLOW & (2) ORANGE
FOR REVERSING ROTATION

8-32 UNC
THREAD

SPRING
WASHER
(THIS END)



ROTATION IS C.CW. VIEWING LEAD END WITH
ORG. TO ORG. & YEL. TO YEL. TO REVERSE
ROTATION INTERCHANGE ORG. & YEL. LEADS



REFER TO S.E.I.M. 24-1

NIDEC MOTOR CORPORATION 14-Jan-19

REVISION RECORD FOR: ECO: E32095

CREATED NEW DRAWING

DIMENSIONS ARE FOR
REFERENCE ONLY

NIDEC MOTOR CORPORATION

INFORMATION DISCLOSED ON THIS DOCUMENT IS CONSIDERED PROPRIETARY AND SHALL NOT BE
REPRODUCED OR DISCLOSED WITHOUT WRITTEN CONSENT OF NIDEC MOTOR CORPORATION

REVISION DATE:
14-JAN-19

ISSUED BY: F. GARCIA

ENGINEER APPROVED: J. RICE

UNLESS TOLERANCE
IS SPECIFIED

CUSTOMER DETAIL DRAWING

CODE V02
ITEM NO. 824687

REV --
SHEET NUMBER 1 OF 3
DWG SIZE B