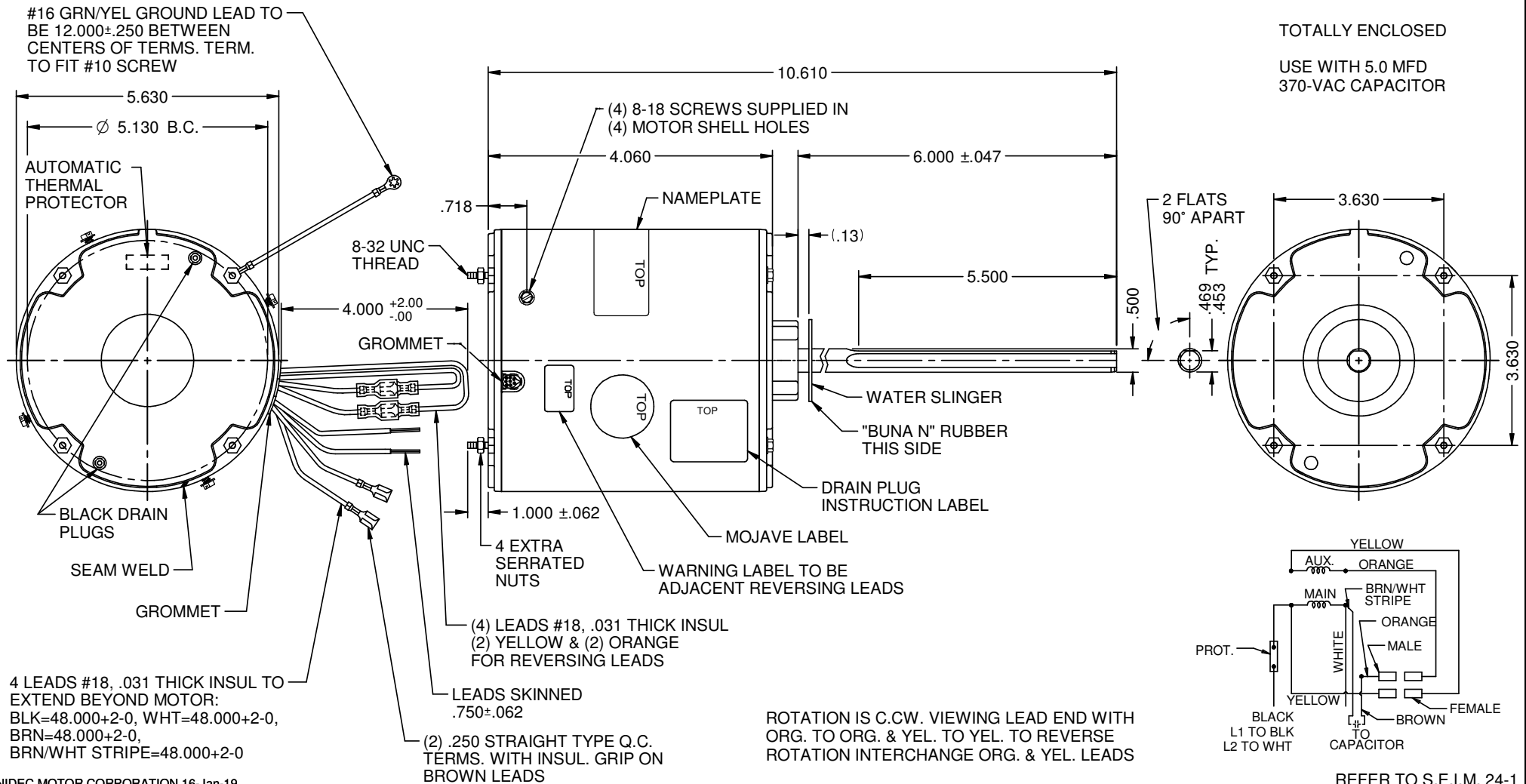


MODEL	REF	CUSTOMER	HP	VOLTS	AMPS	HZ	RPM	ROTATION	CUSTOMER PN.	DESCRIPTION / REMARKS
K55HXWEG-624	---	STANDARD	1/4	208-230	1.7	60	1075	C.CW LEAD END REV.	1860H	K55 ENCLOSED, STUD MTD., BALL BRG.



NIDEC MOTOR CORPORATION 16-Jan-19

REVISION RECORD FOR:		ECO: E32095
CREATED NEW DRAWING		
ISSUED BY:	F. GARCIA	ENGINEER APPROVED: J. RICE

DIMENSIONS ARE FOR  
REFERENCE ONLY

UNLESS TOLERANCE  
IS SPECIFIED

## NIDEC MOTOR CORPORATION

INFORMATION DISCLOSED ON THIS DOCUMENT IS CONSIDERED PROPRIETARY AND SHALL NOT BE  
REPRODUCED OR DISCLOSED WITHOUT WRITTEN CONSENT OF NIDEC MOTOR CORPORATION

REVISION DATE:  
16-JAN-19

TITLE	CODE	ITEM NO.	REV	SHEET NUMBER	DWG SIZE
CUSTOMER DETAIL DRAWING	V02	824729	--	1 OF 3	B