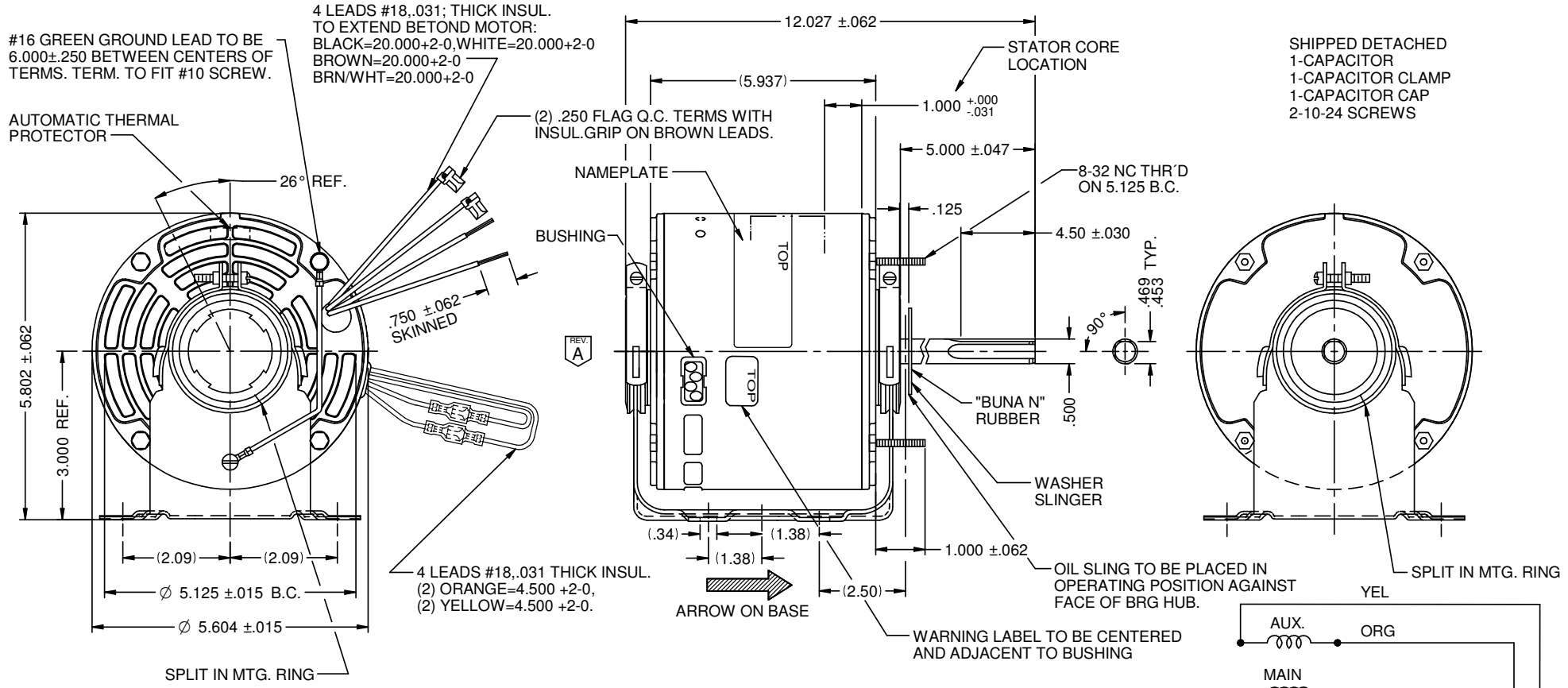
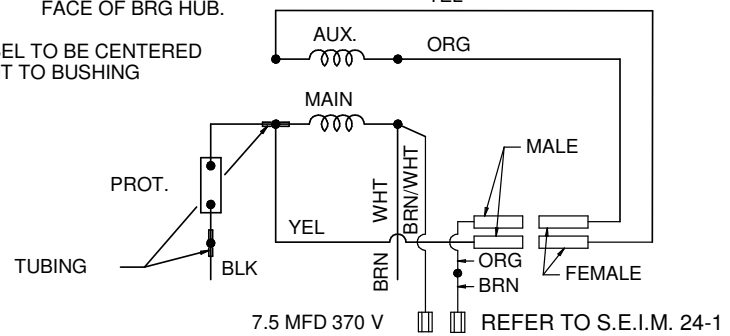


MODEL	REF	CUSTOMER	CAT NO.	HP	VOLTS	AMPS	HZ	RPM	ROTATION	DESCRIPTION / REMARKS
KA55KXSAP-1139		STANDARD	3848	1/2	230	3.1	60	1075	CCW LE REV.	KA55 RES. MTG. S/A SLEEVE BRG. HUB.



ROTATION: C.CW VIEWING LEAD END WITH ORG TO ORG AND YEL TO YEL LEADS TO REVERSE ROTATION, CONNECT ORG TO YEL.



NIDEC MOTOR CORPORATION 11-Sep-19	
REVISION RECORD FOR:	E35283
THE RING DIAMETER VALUE WAS REMOVED	
ISSUED BY:	E. MARTINEZ
ENGINEER APPROVED:	D. TEJEDA

DIMENSIONS ARE FOR REFERENCE ONLY

UNLESS TOLERANCE IS SPECIFIED

NIDEC MOTOR CORPORATION			
INFORMATION DISCLOSED ON THIS DOCUMENT IS CONSIDERED PROPRIETARY AND SHALL NOT BE REPRODUCED OR DISCLOSED WITHOUT WRITTEN CONSENT OF NIDEC MOTOR CORPORATION			
TITLE		CODE	REVISION DATE:
CUSTOMER DETAIL DRAWING		V02	11-SEP-19
ITEM NO.	REV	SHEET NUMBER	DWG SIZE
824783	A	1 OF 3	B