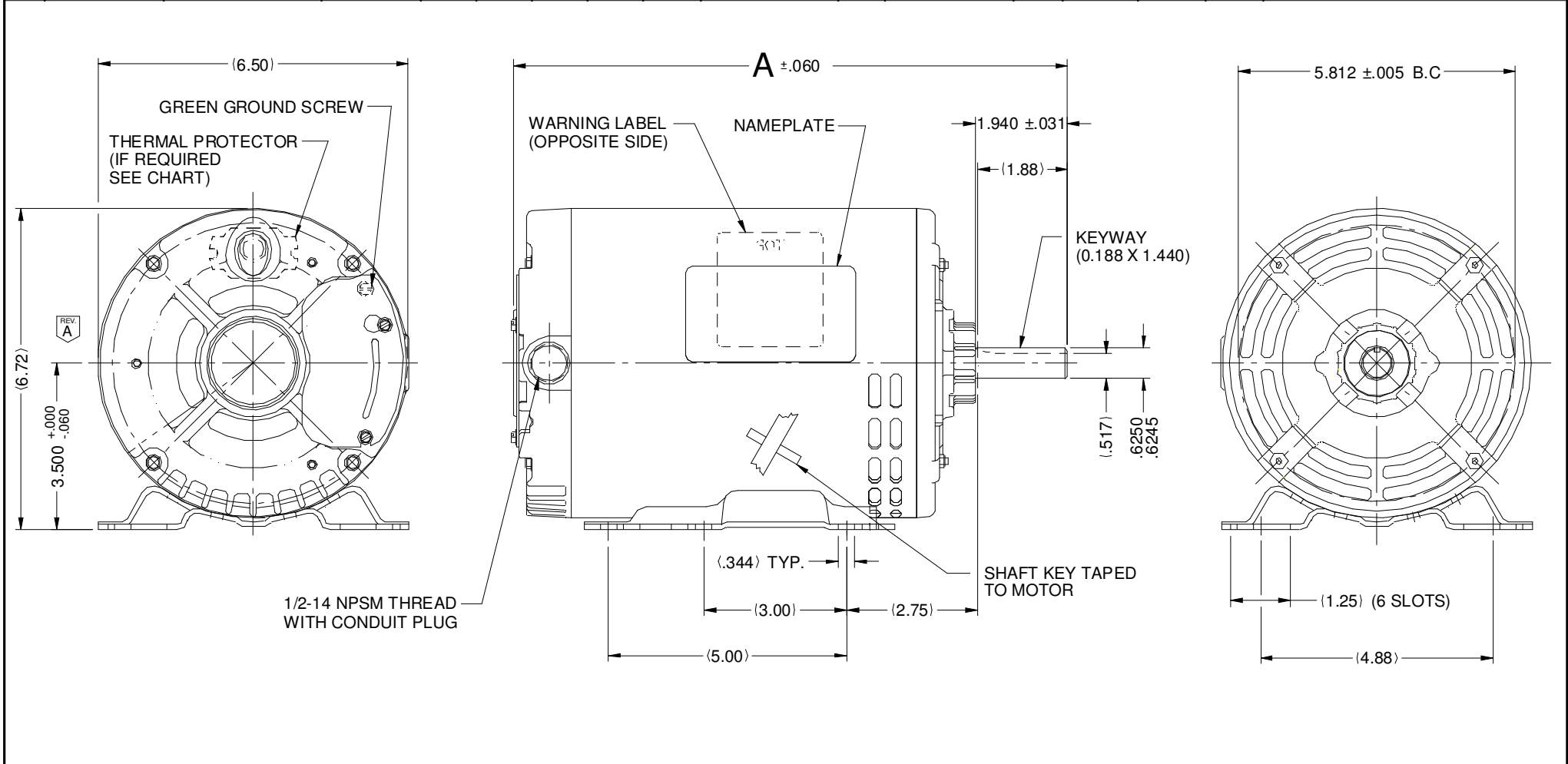


VAR	MODEL	CUSTOMER	CAT. NO.	A	B	C	D	HP	VOLTS	SF	AMPS	HZ	RPM	CONN VOLTS	PROT.	DESCRIPTION / REMARKS
001	P63FPH-1730	USEM	D1P2GH	12.39	----	----	----	1.0	575	1.15	1.1	60	1725	--	NONE	N56H, ODP
002	P63FSE-1771	USEM	D32P2GH	13.86	----	----	----	1.5	575	1.15	1.6	60	1725	--	NONE	N56H, ODP
003	P63FSF-1772	USEM	D2P2GH	12.89	----	----	----	2.0	575	1.15	2.2	60	1725	--	NONE	N56H, ODP



NIDEC MOTOR CORPORATION 20-Nov-19

REFER TO S.E.I.M. 24-1

REVISION RECORD FOR:		TOLERANCES ON DIMENSIONS (UNLESS OTHERWISE SPECIFIED)		NIDEC MOTOR CORPORATION			REVISION DATE:	
3 HOLES ARE ADDED IN END-SHIELD LEAD END		E35853		INFORMATION DISCLOSED ON THIS DOCUMENT IS CONSIDERED PROPRIETARY AND SHALL NOT BE REPRODUCED OR DISCLOSED WITHOUT WRITTEN CONSENT OF NIDEC MOTOR CORPORATION			20-NOV-19	
		INCHES .XX = ± .010 .XXX = ± .005		mm		TITLE		REV
ISSUED BY: C. TORRES		ENGINEER APPROVED: T. MILLER		ANGLES X° = ± 1°		CUSTOMER DETAIL DRAWING		A
						CODE	ITEM NO.	SHEET NUMBER
						V02	825739	1 OF 4
								DWG SIZE
								B