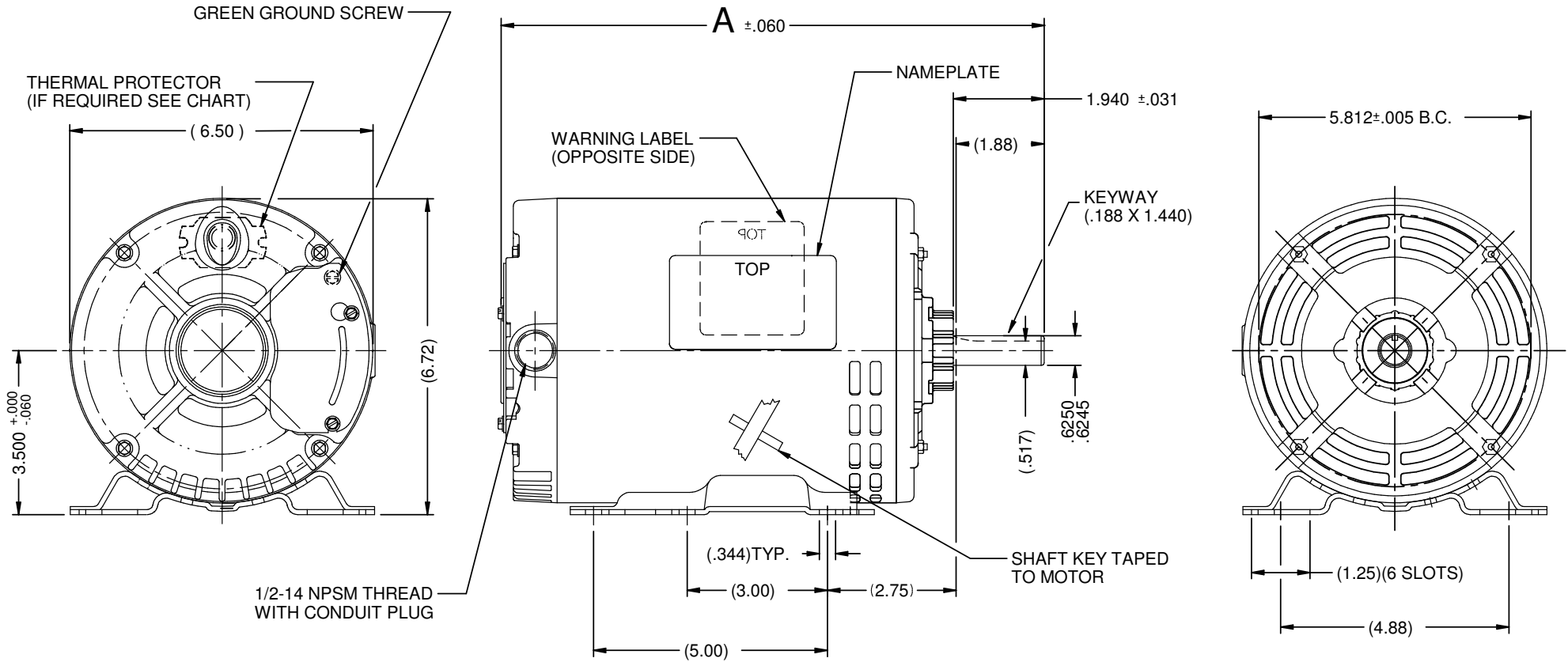


| VAR | MODEL       | CUSTOMER | CAT. NO. | A     | B     | C     | D     | HP  | VOLTS | SF   | AMPS | HZ | RPM  | CONN VOLTS | PROT. | DESCRIPTION / REMARKS |
|-----|-------------|----------|----------|-------|-------|-------|-------|-----|-------|------|------|----|------|------------|-------|-----------------------|
| 001 | P63FPD-1726 | USEM     | D12P2GH  | 11.39 | ----- | ----- | ----- | 1/2 | 575   | 1.25 | 0.68 | 60 | 1725 | --         | NONE  | N56H, ODP             |



NIDEC MOTOR CORPORATION 04-Mar-19

REFER TO S.E.I.M. 24-1

|                       |                               |
|-----------------------|-------------------------------|
| NEW DRAWING CREATED   | REVISION RECORD FOR: JC 72900 |
| ISSUED BY: E.PIMENTEL | ENGINEER APPROVED: T.MILLER   |

|   |    |
|---|----|
| TOLERANCES ON DIMENSIONS (UNLESS OTHERWISE SPECIFIED) |    |
| INCHES<br>.XX = ± .010<br>.XXX = ± .005               | mm |
| ANGLES X° = ±1°                                       |    |

|  |     |              |               |
|--|-----|--------------|---------------|
| <b>NIDEC MOTOR CORPORATION</b>   |     |              |               |
| INFORMATION DISCLOSED ON THIS DOCUMENT IS CONSIDERED PROPRIETARY AND SHALL NOT BE REPRODUCED OR DISCLOSED WITHOUT WRITTEN CONSENT OF NIDEC MOTOR CORPORATION |     |              |               |
| TITLE  |     | CODE         | REVISION DATE |
| CUSTOMER DETAIL DRAWING  |     | V02          | 04-MAR-19     |
| ITEM NO.   | REV | SHEET NUMBER | DWG SIZE      |
| 825747   | --  | 1 OF 4       | B             |