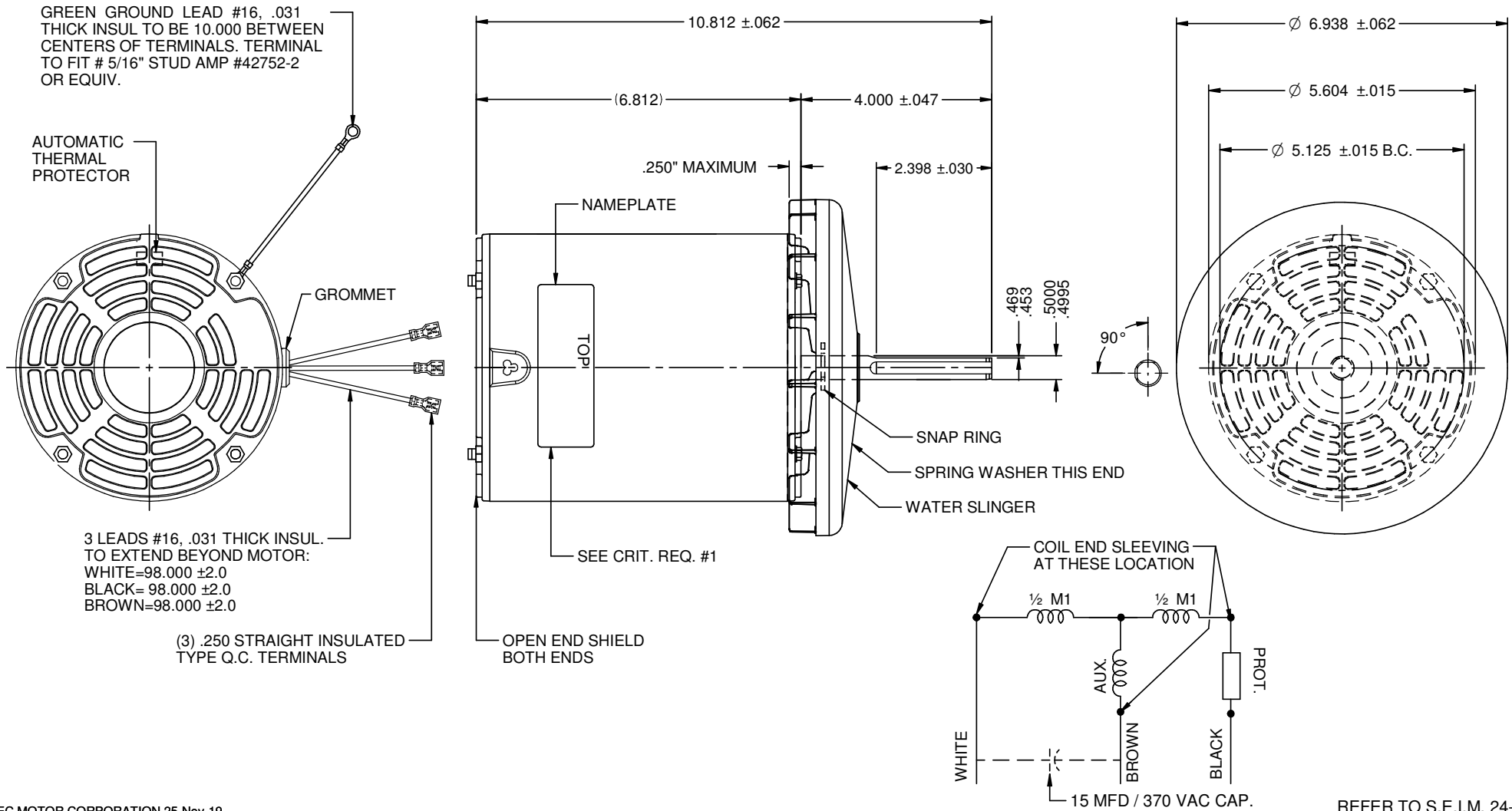


MODEL	REF	CUSTOMER	HP	VOLTS	AMPS	HZ	RPM	ROTATION	CUST. PT. NO.	DESCRIPTION / REMARKS
K55HXNPB-1104	A29149	WHOLESALE -HAC	3/4	460	2.3	60	1100	CCW LEAD END	8233	K55 BALL BEARING, OPEN



NIDEC MOTOR CORPORATION 25-Nov-19

REFER TO S.E.I.M. 24-1

REVISION RECORD FOR: ECO E33406	
DRAWING CREATED	
ISSUED BY: I. GOMEZ	ENGINEER APPROVED: D. TEJEDA

DIMENSIONS ARE FOR REFERENCE ONLY  
 UNLESS TOLERANCE IS SPECIFIED

<b>NIDEC MOTOR CORPORATION</b>			
INFORMATION DISCLOSED ON THIS DOCUMENT IS CONSIDERED PROPRIETARY AND SHALL NOT BE REPRODUCED OR DISCLOSED WITHOUT WRITTEN CONSENT OF NIDEC MOTOR CORPORATION			
TITLE		CODE	ITEM NO.
CUSTOMER DETAIL DRAWING		V02	827185
REVISION DATE:		REV	SHEET NUMBER
31-MAY-19		--	1 OF 3
		DWG SIZE	
		B	