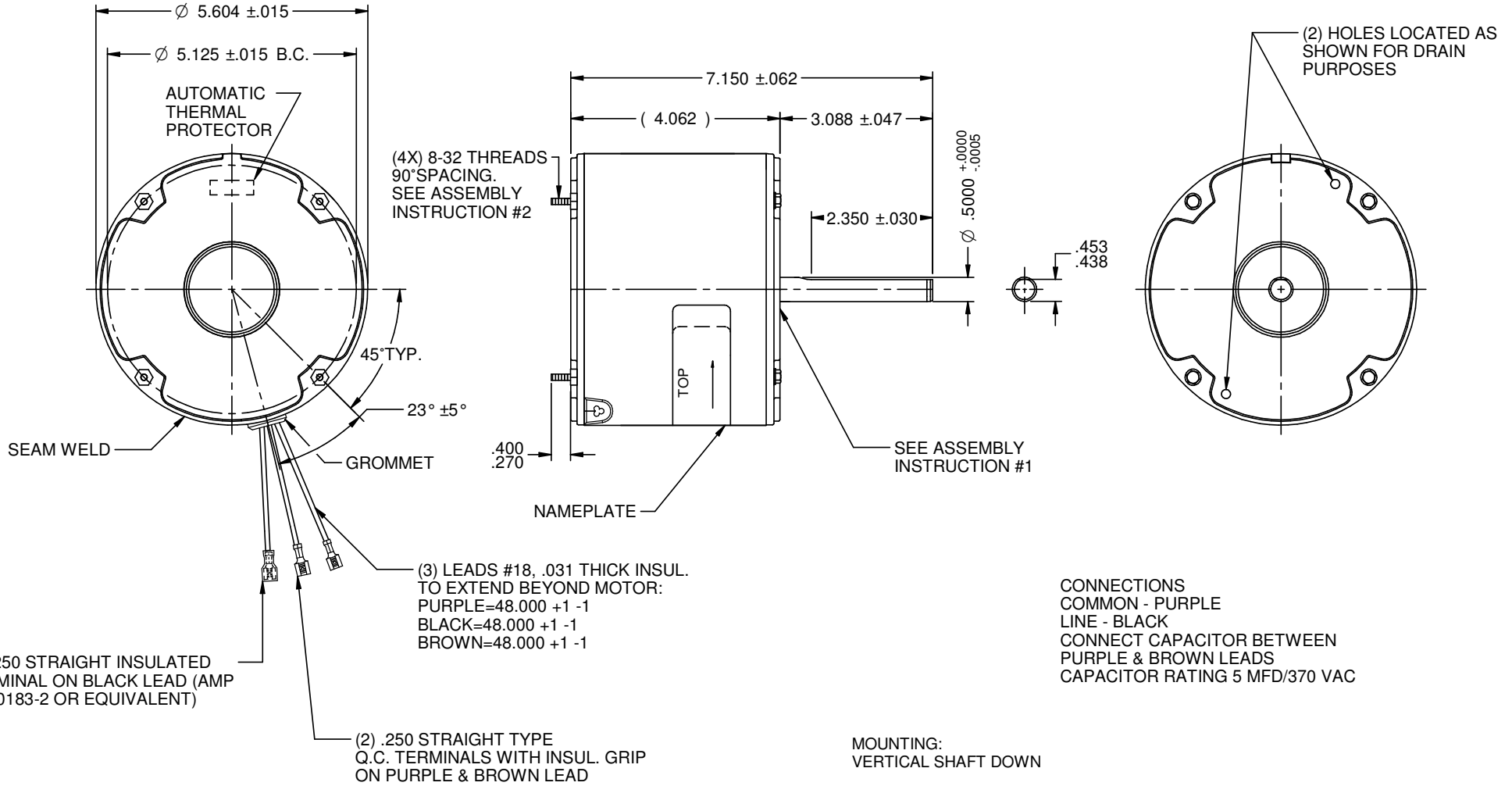


MODEL	REF	CUSTOMER	HP	VOLTS	AMPS	HZ	RPM	ROTATION	CATALOG NUMBER	DESCRIPTION / REMARKS
K55HXKRC-3356	E52040	WHOLESALE HAC	1/8-1/6	208-230	.83-.98	60	810	CCW LEAD END	GM753	TEAO, BALL BEARING, INS. CL. B., S.F. 1.0, FRAME 48Y



NIDEC MOTOR CORPORATION 30-Jan-20

REFER TO S.E.I.M. 24-1

CREATED DRAWING:	REVISION RECORD FOR: JC 73653
ISSUED BY: G. ISASSI	ENGINEER APPROVED: D. TEJEDA

DIMENSIONS ARE FOR REFERENCE ONLY

UNLESS TOLERANCE IS SPECIFIED

NIDEC MOTOR CORPORATION					
INFORMATION DISCLOSED ON THIS DOCUMENT IS CONSIDERED PROPRIETARY AND SHALL NOT BE REPRODUCED OR DISCLOSED WITHOUT WRITTEN CONSENT OF NIDEC MOTOR CORPORATION					REVISION DATE: 09-DEC-19
TITLE	CODE	ITEM NO.	REV	SHEET NUMBER	DWG SIZE
CUSTOMER DETAIL DRAWING	V02	830744	-	1 OF 3	B