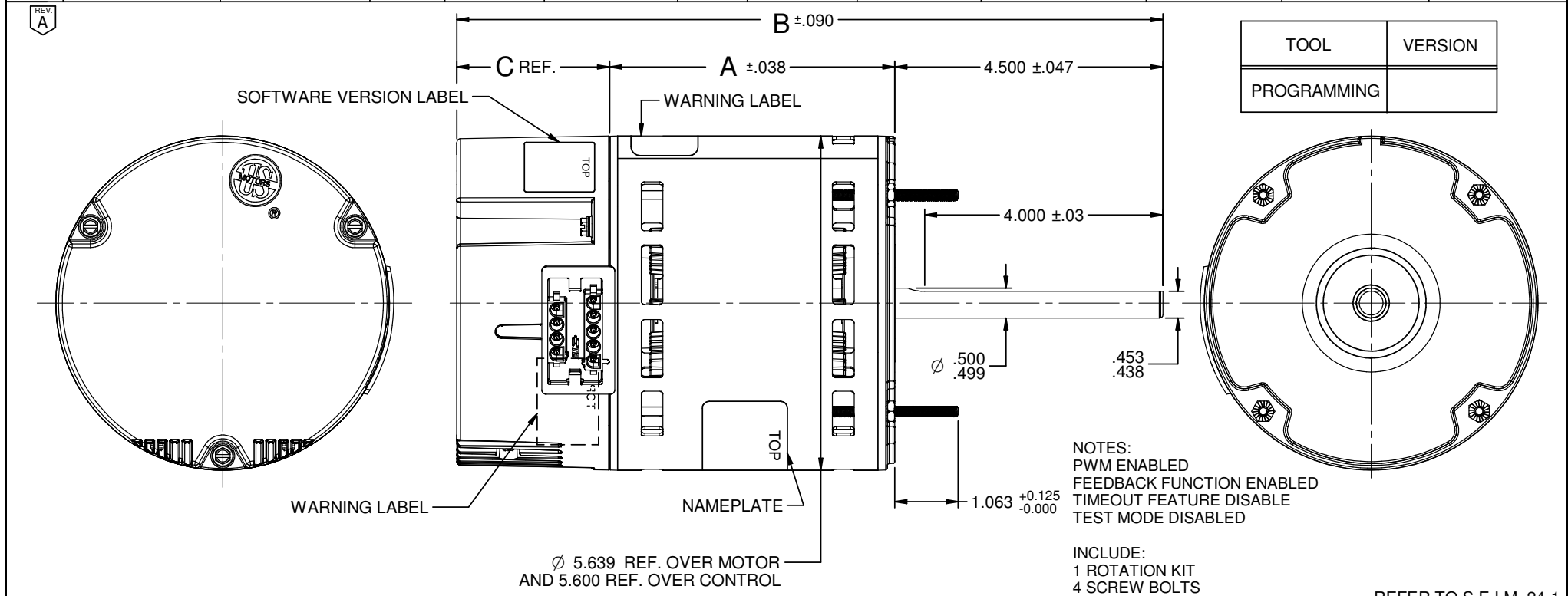


VAR	MODEL	CUSTOMER	H.P.	VOLTS	AMPS	HZ	R.P.M.	ROTATION	CATALOG NO.	DIM. A	DIM. B	DIM. C
001	M55PWACA-1155	WHOLESALE-HAC	1	115/208-230-277	12.0/7.5-7.1-6.2 & 12.0/7.6-6.9-6.2	60&50	1050/ VAR	REVERSIBLE	8650PS	4.787	11.850	2.563
002	M55PWACB-1156	WHOLESALE-HAC	3/4	115/208-230-277	9.4/5.9-5.6-4.8 & 9.4/6.0-5.6-4.9	60&50	1050/ VAR	REVERSIBLE	8640PS	4.412	11.475	2.563
003	M55PWACC-1157	WHOLESALE-HAC	1/2	115/208-230-277	6.6/4.2-3.9-3.4 & 6.5/4.2-3.9-3.4	60&50	1050/ VAR	REVERSIBLE	8630PS	4.037	11.100	2.563
004	M55PWACD-1158	WHOLESALE-HAC	1/3	115/208-230-277	4.7/3.0-2.8-2.4 & 4.6/3.0-2.8-2.4	60&50	1050/ VAR	REVERSIBLE	8620PS	3.662	10.725	2.563
005	M55PWACS-1171	WHOLESALE-HAC	1	115/208-230-277	11.1/6.7-6.6-6.0 & 10.9/6.6-6.7-6.0	60&50	1800/ VAR	CCW LE REV	8450PS	4.412	11.475	2.563
006	M55PWACT-1172	WHOLESALE-HAC	3/4	115/208-230-277	8.8/5.4-5.2-4.7 & 9.0/5.4-5.2-4.7	60&50	1800/ VAR	CCW LE REV	8440PS	4.037	11.100	2.563
007	M55PWACU-1173	WHOLESALE-HAC	1/2	115/208-230-277	6.8/4.2-4.1-3.7 & 6.8/4.1-4.1-3.7	60&50	1800/ VAR	CCW LE REV	8430PS	3.662	10.725	2.563
008	M55PWACV-1174	WHOLESALE-HAC	1/3	115/208-230-277	4.4/2.8-2.7-2.4 & 4.4/2.8-2.6-2.4	60&50	1800/ VAR	CCW LE REV	8420PS	3.412	10.475	2.563



NIDEC MOTOR CORPORATION 03-Feb-21

REFER TO S.E.I.M. 24-1

REVISION RECORD FOR:		TOLERANCES ON DIMENSIONS (UNLESS OTHERWISE SPECIFIED)		NIDEC MOTOR CORPORATION			REVISION DATE:	
JC 74534				INFORMATION DISCLOSED ON THIS DOCUMENT IS CONSIDERED PROPRIETARY AND SHALL NOT BE REPRODUCED OR DISCLOSED WITHOUT WRITTEN CONSENT OF NIDEC MOTOR CORPORATION			04-FEB-21	
ADDED NEW VAR #007		INCHES		TITLE			REV	
ADDED NEW VAR #008 PER JC 74537		.XX = ± .010		CUSTOMER DETAIL DRAWING			A	
ADDED NEW VAR #005 PER JC 74535		mm		CODE			SHEET NUMBER	
ADDED NEW VAR #006 PER JC 74536		.XXX = ± .005		V02			1 OF 4	
ISSUED BY: R. PEREZ		ANGLES X° = ±1°		ITEM NO.			DWG SIZE	
ENGINEER APPROVED: C. LUGO				835984			B	