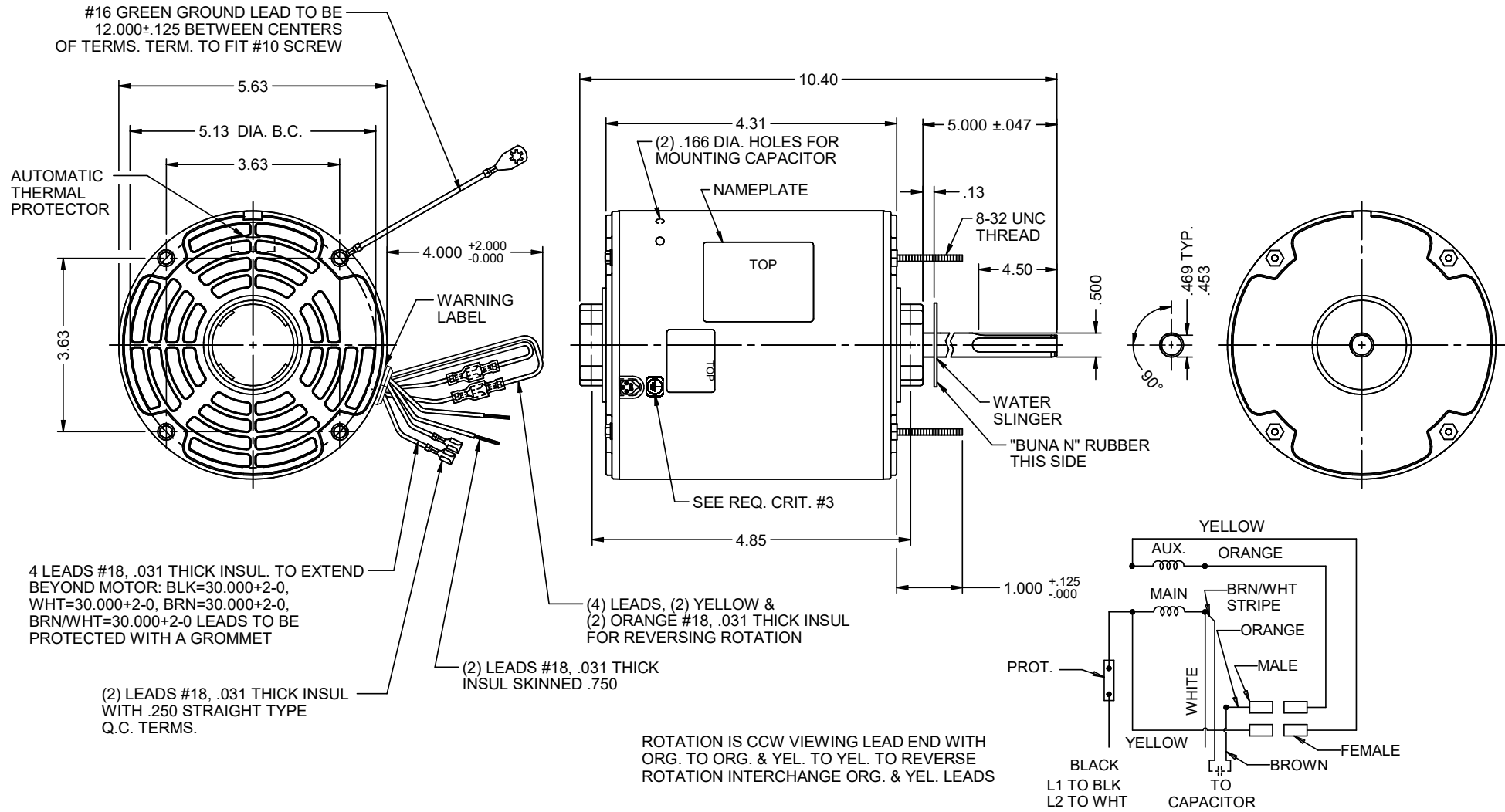


| MODEL         | REF | CUSTOMER | HP  | VOLTS   | AMPS    | HZ | RPM  | ROTATION         | CUSTOMER PN. | DESCRIPTION / REMARKS                            |
|---------------|-----|----------|-----|---------|---------|----|------|------------------|--------------|--|
| K55HXSMJ-1776 |     | STANDARD | 1/3 | 208-230 | 2.5-2.2 | 60 | 1075 | CCW LEAD END REV | 6880         | KA55 OPEN HUB OR STUD MTD. SELF-ALIGN, SLV. BRG. |



NIDEC MOTOR CORPORATION 06-Jan-21

REFER TO S.E.I.M. 24-1

|                  |                      |             |
|------------------|----------------------|-------------|
| CREATED DRAWING. | REVISION RECORD FOR: | ECO: E38873 |
| ISSUED BY:       | ENGINEER APPROVED:   |             |
| G. ISASSI        | G. MEDINA            |             |

DIMENSIONS ARE FOR REFERENCE ONLY

UNLESS TOLERANCE IS SPECIFIED

|  |     |              |                |
|--|-----|--------------|----------------|
| <b>NIDEC MOTOR CORPORATION</b>   |     |              |                |
| INFORMATION DISCLOSED ON THIS DOCUMENT IS CONSIDERED PROPRIETARY AND SHALL NOT BE REPRODUCED OR DISCLOSED WITHOUT WRITTEN CONSENT OF NIDEC MOTOR CORPORATION |     |              |                |
| TITLE  |     | CODE         | REVISION DATE: |
| CUSTOMER DETAIL DRAWING  |     | V02          | 06-JAN-21      |
| ITEM NO.   | REV | SHEET NUMBER | DWG SIZE       |
| 836022   | -   | 1 OF 3       | B              |