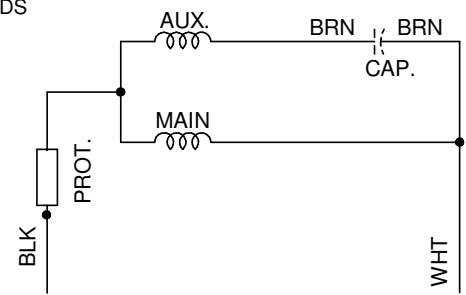
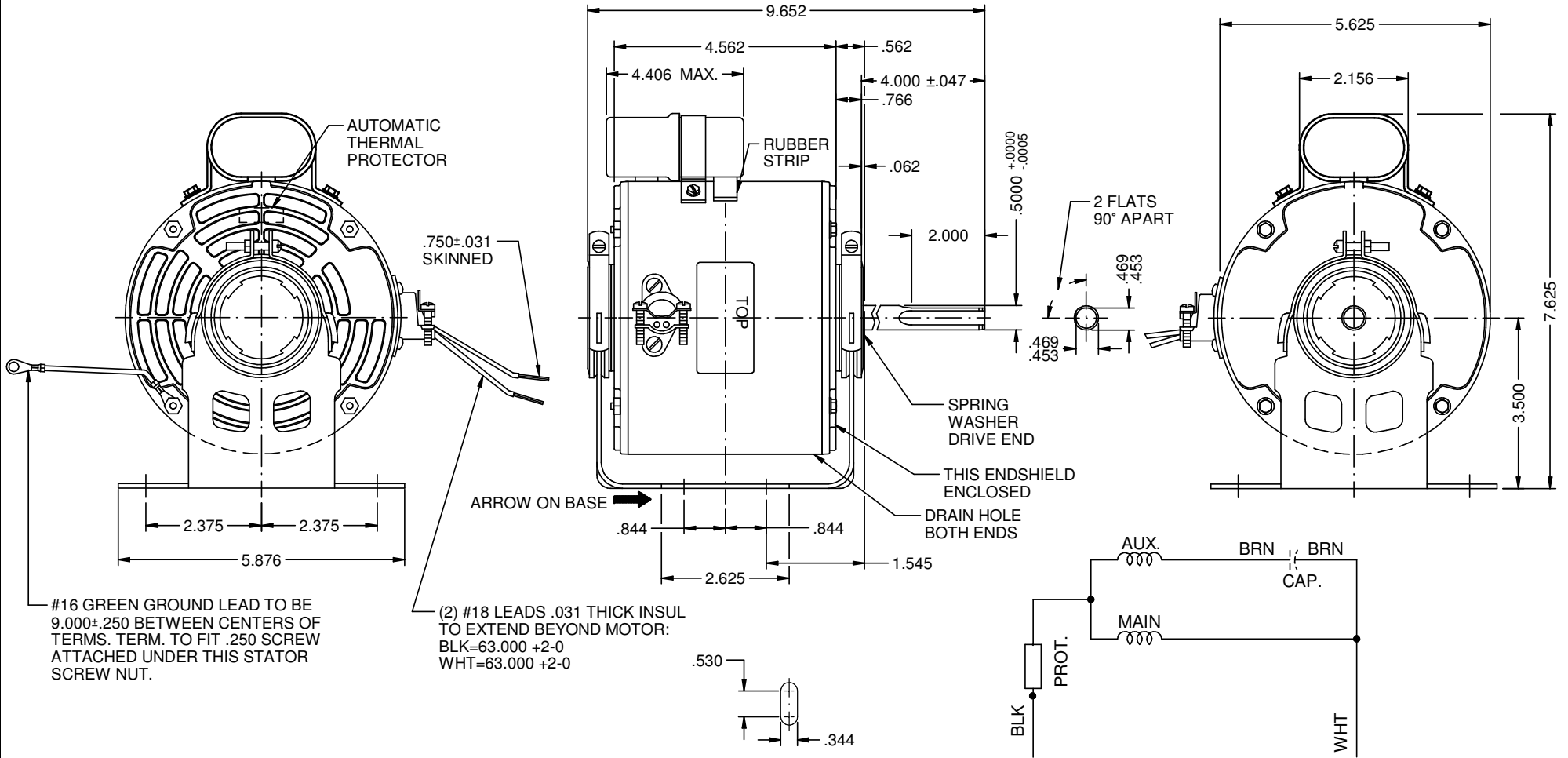


MODEL	REF	CUSTOMER	HP	VOLTS	AMPS	HZ	RPM	ROTATION	CUSTOMER PN.	DESCRIPTION / REMARKS
K55HXPZZ-7698		STANDARD	1/3B	208-230	3.5	50/60	1075	CW LEAD END	CAT NO. 6986	K55 RES MTD BALL BRG



NIDEC MOTOR CORPORATION 28-Jan-21

REFER TO S.E.I.M. 24-1

CREATED DRAWING.	REVISION RECORD FOR:	ECO: E39071
ISSUED BY:	ENGINEER APPROVED:	
G. ISASSI	G. MEDINA	

DIMENSIONS ARE FOR REFERENCE ONLY
 UNLESS TOLERANCE IS SPECIFIED

NIDEC MOTOR CORPORATION			
INFORMATION DISCLOSED ON THIS DOCUMENT IS CONSIDERED PROPRIETARY AND SHALL NOT BE REPRODUCED OR DISCLOSED WITHOUT WRITTEN CONSENT OF NIDEC MOTOR CORPORATION			
TITLE		REVISION DATE:	
CUSTOMER DETAIL DRAWING		28-JAN-21	
CODE	ITEM NO.	REV	SHEET NUMBER
V02	836293	-	1 OF 3
			DWG SIZE
			B