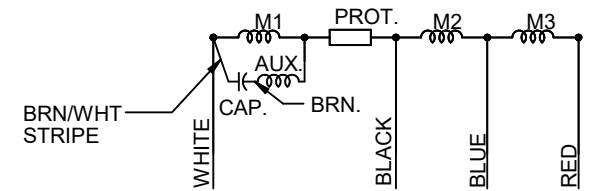
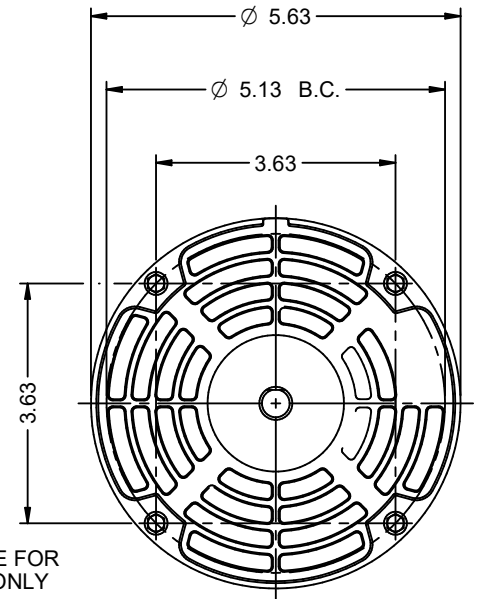
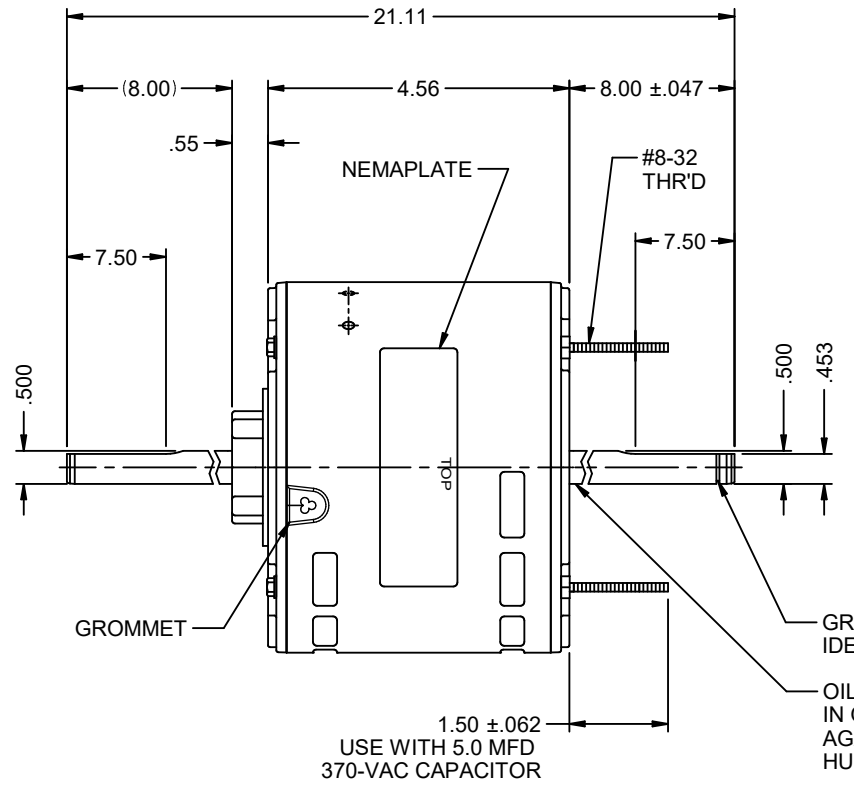
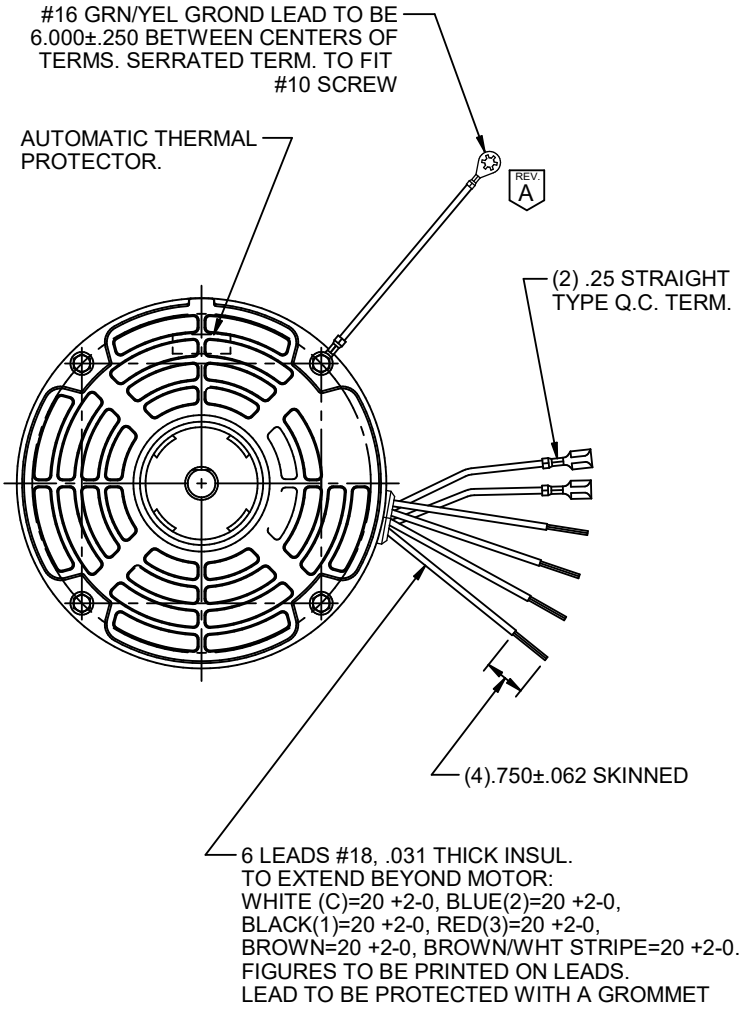


MODEL	REF	CUSTOMER	HP	VOLTS	AMPS	HZ	RPM	ROTATION	CUSTOMER PT. NO.	DESCRIPTION / REMARKS
K55HXSPK-3135		STANDARD	1/3	230	2.5	60	1075/3 SPD	CCW LEAD END	3135	K55 HUB & HUBLESS S/A -SLV BRG. OPEN STUD MTD.



COLOR CODE
 WHITE - COMMON
 BLACK - HIGH
 BLUE - MED
 RED - LOW
 BROWN - CAPAC.

NIDEC MOTOR CORPORATION 20-Aug-21

REFER TO S.E.I.M. 24-1

REVISION RECORD FOR: ECO: E40468	
GROUND LEAD TERMINAL UPDATED TO SERRATED TERM.	
ISSUED BY: R. SANCHEZ	ENGINEER APPROVED: W. GARZA

DIMENSIONS ARE FOR REFERENCE ONLY

UNLESS TOLERANCE IS SPECIFIED

NIDEC MOTOR CORPORATION			
INFORMATION DISCLOSED ON THIS DOCUMENT IS CONSIDERED PROPRIETARY AND SHALL NOT BE REPRODUCED OR DISCLOSED WITHOUT WRITTEN CONSENT OF NIDEC MOTOR CORPORATION			
TITLE			REVISION DATE: 20-AUG-21
CUSTOMER DETAIL DRAWING	CODE V02	ITEM NO. 836301	REV A
			SHEET NUMBER 1 OF 3
			DWG SIZE B