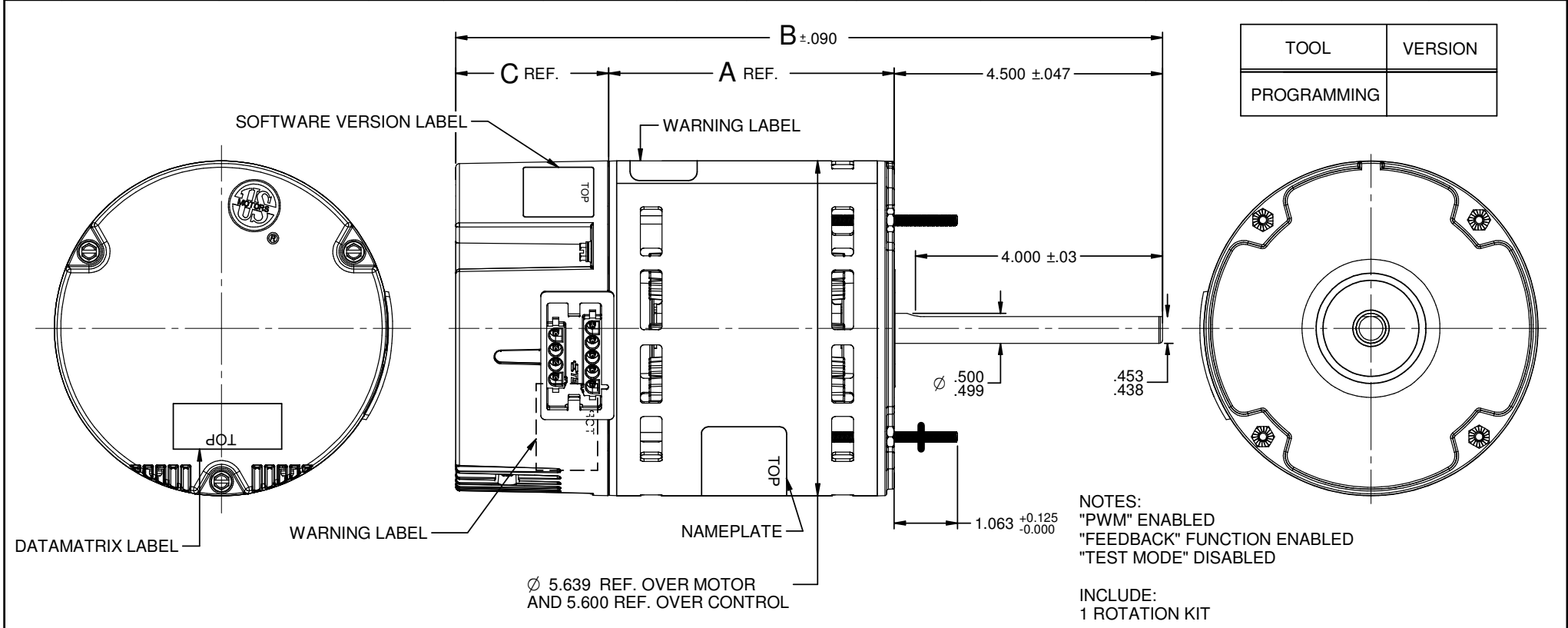


VAR	MODEL	CUSTOMER	H.P.	VOLTS	AMPS	HZ	R.P.M.	ROTATION	CATALOG NO.	DIM. A	DIM. B	DIM. C
001	M55PWADC-1180	WHOLESALE-HAC	1-3/4	115/208-230-277	12.0/7.5-7.1-6.2 & 12.0/7.6-6.9-6.2	60&50	1050/ VAR	CCW LE REV	8652UI	4.787	11.850	2.563
002	M55PWADD-1181	WHOLESALE-HAC	3/4-1/2	115/208-230-277	9.4/5.9-5.6-4.8 & 9.4/6.0-5.6-4.9	60&50	1050/ VAR	CCW LE REV	8642UI	4.412	11.475	2.563
003	M55PWADE-1182	WHOLESALE-HAC	1/2-1/3	115/208-230-277	6.6/4.2-3.9-3.4 & 6.5/4.2-3.9-3.4	60&50	1050/ VAR	CCW LE REV	8632UI	4.037	11.100	2.563
004	M55PWADF-1183	WHOLESALE-HAC	1-3/4	115/208-230-277	11.1/6.7-6.6-6.0 & 10.9/6.6-6.7-6.0	60&50	1800/ VAR	CCW LE REV	8452UI	4.412	11.475	2.563
005	M55PWADG-1184	WHOLESALE-HAC	3/4-1/2	115/208-230-277	8.8/5.4-5.2-4.7 & 9.0/5.4-5.2-4.7	60&50	1800/ VAR	CCW LE REV	8442UI	4.037	11.100	2.563
006	M55PWADH-1185	WHOLESALE-HAC	1/2-1/3	115/208-230-277	6.3/4.1-3.7-3.4 & 6.3/4.1/3.8-3.4	60&50	1800/ VAR	CCW LE REV	8432UI	3.662	10.725	2.563



TOOL	VERSION
PROGRAMMING	

NIDEC MOTOR CORPORATION 14-Apr-21

REFER TO S.E.I.M. 24-1

REVISION RECORD FOR: ECO: E39545	
PAGES 4 AND 6 ADDED	
ISSUED BY: R. SANCHEZ	ENGINEER APPROVED: M. DE LEON

TOLERANCES ON DIMENSIONS (UNLESS OTHERWISE SPECIFIED)	
INCHES XX = ± .010 XXX = ± .005	mm
ANGLES X° = ±1°	

NIDEC MOTOR CORPORATION			
INFORMATION DISCLOSED ON THIS DOCUMENT IS CONSIDERED PROPRIETARY AND SHALL NOT BE REPRODUCED OR DISCLOSED WITHOUT WRITTEN CONSENT OF NIDEC MOTOR CORPORATION			
TITLE		CODE	REVISION DATE
CUSTOMER DETAIL DRAWING		V02	14-APR-21
ITEM NO.	REV	SHEET NUMBER	DWG SIZE
836494	A	1 OF 6	B