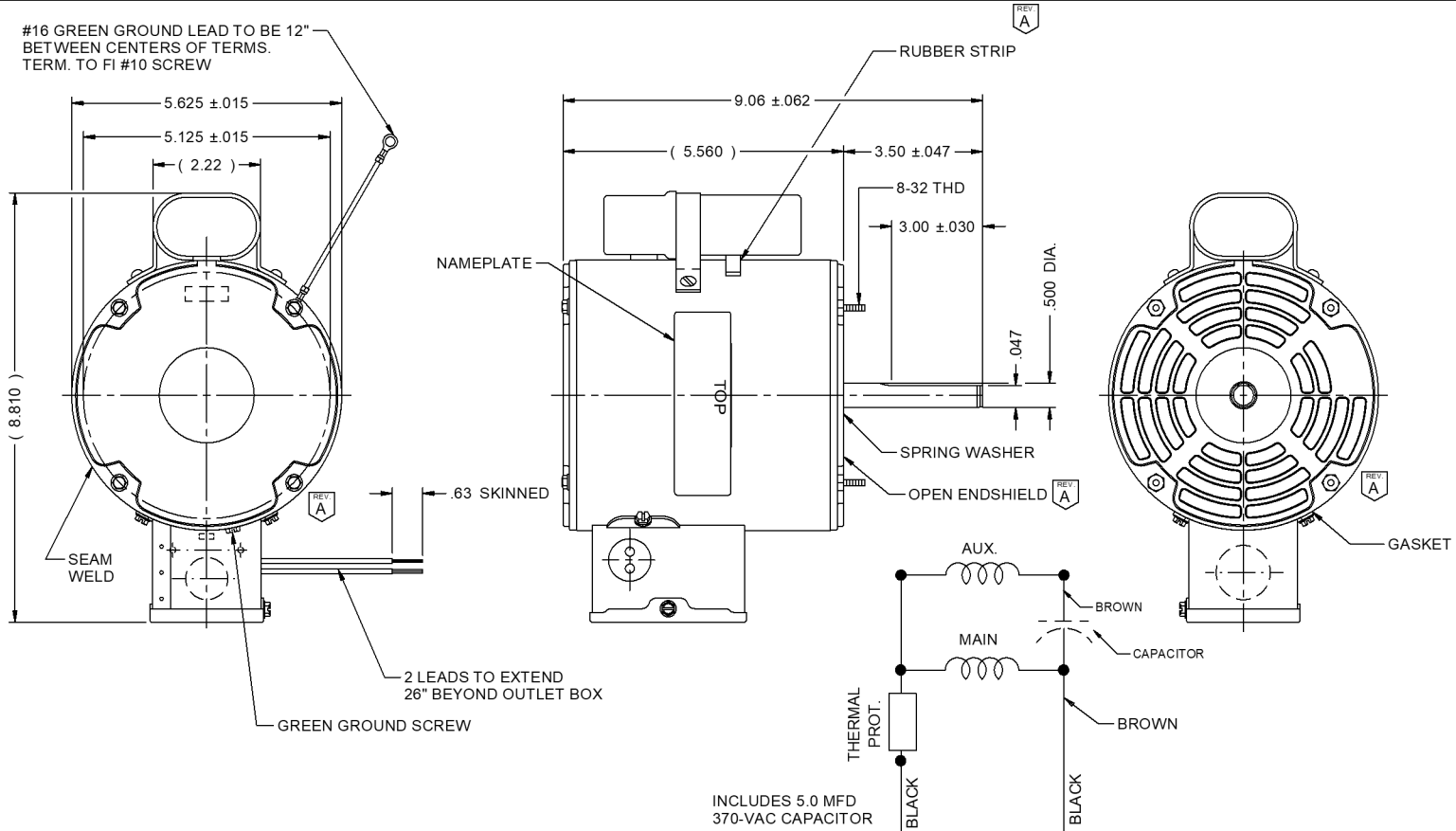


MODEL	REF	CUSTOMER	HP	VOLTS	AMPS	HZ	RPM	ROTATION	CUSTOMER PT. NO.	DESCRIPTION / REMARKS
K55HXSME-1644		STANDARD	1/2	208-230	2.7	50/60	1725	CW LEAD END	644	



NIDEC MOTOR CORPORATION 20-May-21

REFER TO S.E.I.M. 24-1

REVISION RECORD FOR: ECO: E39891	
UPDATED VIEW ON END SHIELD BOTH ENDS AND CUSTOMER PART NUMBER	
ISSUED BY: D. VALLE	ENGINEER APPROVED: M. DE LEON

DIMENSIONS ARE FOR REFERENCE ONLY
UNLESS TOLERANCE IS SPECIFIED

NIDEC MOTOR CORPORATION			
INFORMATION DISCLOSED ON THIS DOCUMENT IS CONSIDERED PROPRIETARY AND SHALL NOT BE REPRODUCED OR DISCLOSED WITHOUT WRITTEN CONSENT OF NIDEC MOTOR CORPORATION			
TITLE	CODE	ITEM NO.	REVISION DATE
CUSTOMER DETAIL DRAWING	V02	837296	20-MAY-21
REV	SHEET NUMBER	DWG SIZE	
A	1 OF 3	B	

V02_NMCB (MAR-2014)

SOLIDEAGE