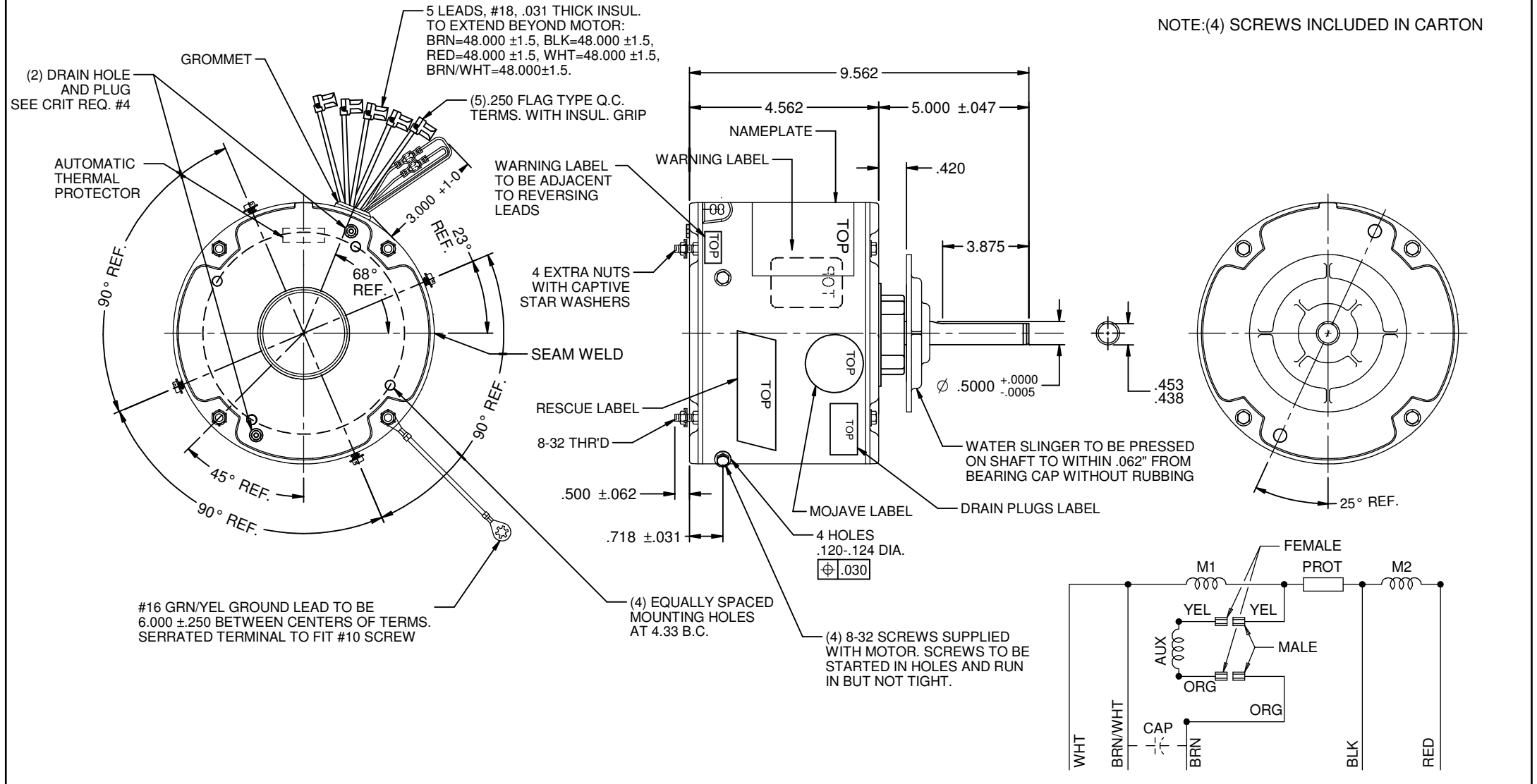


MODEL	REF	CUSTOMER	HP	VOLTS	AMPS	HZ	RPM	ROTATION	CUSTOMER PT. NO.	DESCRIPTION / REMARKS
K55HXCLF-586	----	WHOLESALE-HAC	1/3-1/6	208-230	2.6/1.8	60	1075/2 SPD	CCW LEAD END, REV	5462H	K55 BALL BRG, TOTALLY ENCLOSED

NOTE:(4) SCREWS INCLUDED IN CARTON



NIDEC MOTOR CORPORATION 15-Oct-21

REFER TO S.E.I.M. 24-1

REVISION RECORD FOR: E40892		DIMENSIONS ARE FOR REFERENCE ONLY		NIDEC MOTOR CORPORATION			
NEW DRAWING		UNLESS TOLERANCE IS SPECIFIED		INFORMATION DISCLOSED ON THIS DOCUMENT IS CONSIDERED PROPRIETARY AND SHALL NOT BE REPRODUCED OR DISCLOSED WITHOUT WRITTEN CONSENT OF NIDEC MOTOR CORPORATION			
ISSUED BY: R. PEREZ		ENGINEER APPROVED: C. LUGO		TITLE: CUSTOMER DETAIL DRAWING		REVISION DATE: 18-OCT-21	
				CODE: V02	ITEM NO.: 839610	REV: --	SHEET NUMBER: 1 OF 3
						DWG SIZE: B	