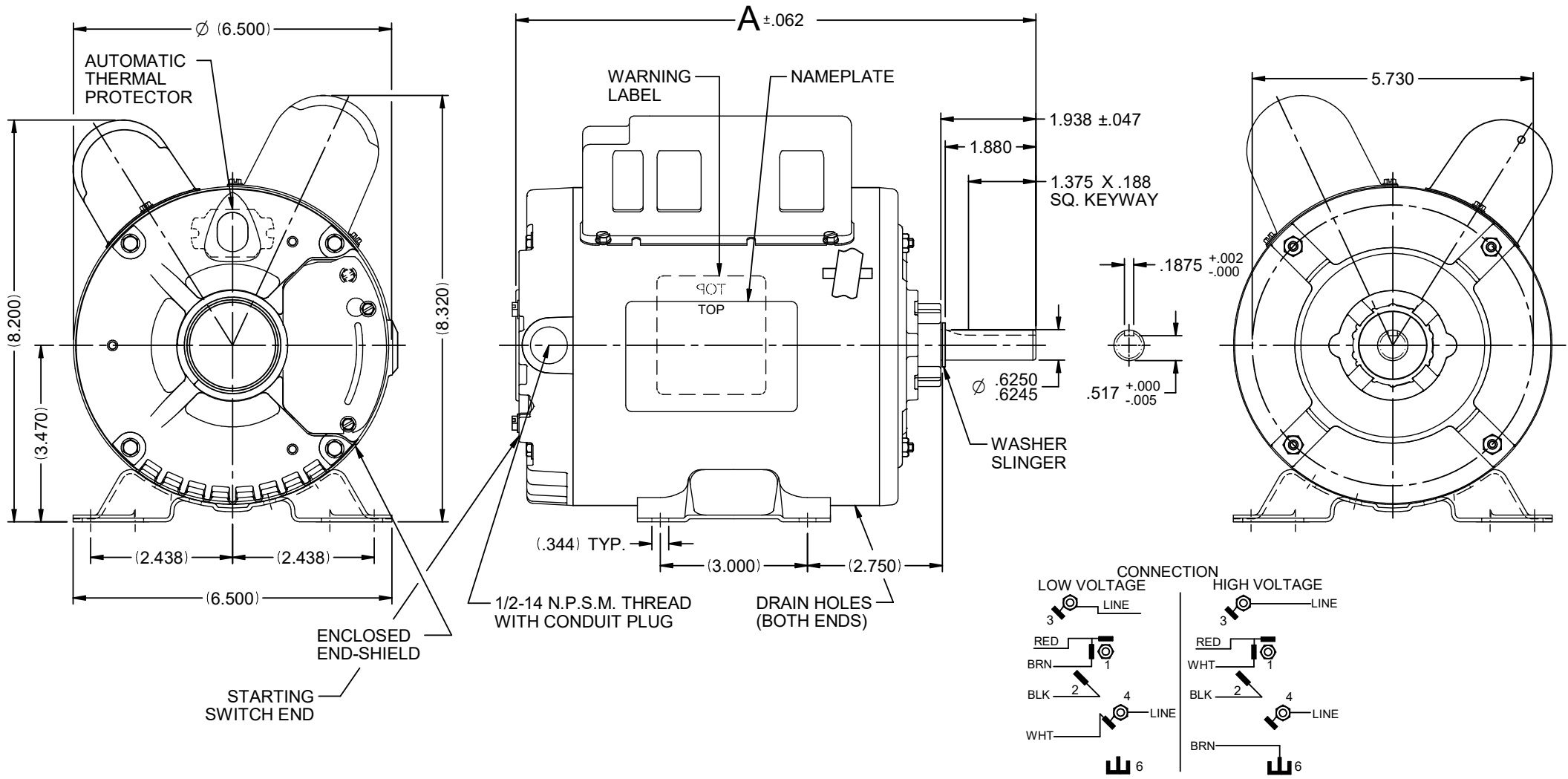


| VAR | MODEL | CUSTOMER | CUST. PT. NO. | A | HP | VOLTS | AMPS | SF | PROTECTOR | HZ | RPM | ROTATION | DESCRIPTION / REMARKS |
|-----|---------------|----------|---------------|-------|-----|-------------|---------------------------|-----|-----------|-------|-----------|------------------|--------------------------------------|
| 001 | T63ZZDKW-1925 | USEM | FD32CA2P | 12.88 | 1.5 | 115/208-230 | 13.0/6.7-6.5&10.8/7.2-5.4 | 1.0 | AUTO | 60&50 | 1725&1425 | CW LEAD END REV. | T63, RIGID MTD., BALL/BALL BRG, TEAO |

REV A

SHAFT KEY TAPED TO MOTOR



NIDEC MOTOR CORPORATION 22-Mar-23

REFER TO S.E.I.M. 24-1

| | |
|--|------------------------------|
| REVISION RECORD FOR: ECO: E44158 | |
| UPDATED VOLTS AND AMPS ON PAGE 1 AND 2 | |
| ISSUED BY: F. GARCIA | ENGINEER APPROVED: F. GARCIA |

DIMENSIONS ARE FOR REFERENCE ONLY UNLESS TOLERANCE SPECIFIED

ANGLES X° = $\pm 1^\circ$

| | | | |
|--|--------------|----------|---------------|
| NIDEC MOTOR CORPORATION | | | |
| INFORMATION DISCLOSED ON THIS DOCUMENT IS CONSIDERED PROPRIETARY AND SHALL NOT BE REPRODUCED OR DISCLOSED WITHOUT WRITTEN CONSENT OF NIDEC MOTOR CORPORATION | | | |
| TITLE | | CODE | ITEM NO. |
| CUSTOMER DETAIL DRAWING | | V02 | 844825 |
| REV | SHEET NUMBER | DWG SIZE | REVISION DATE |
| A | 1 OF 4 | B | 22-MAR-23 |